

This tutorial was originally titled “Pulling the Trigger”
and was recorded at the Online Trading Expo

Targeting Profitable Entry & Exit Points

With

Alan Farley

© Copywrite 2001 Traders' Library

TRADING SOFTWARE

FOR SALE & EXCHANGE

www.trading-software-collection.com

Subscribe for FREE download 5000+ trading books.

Mirrors:

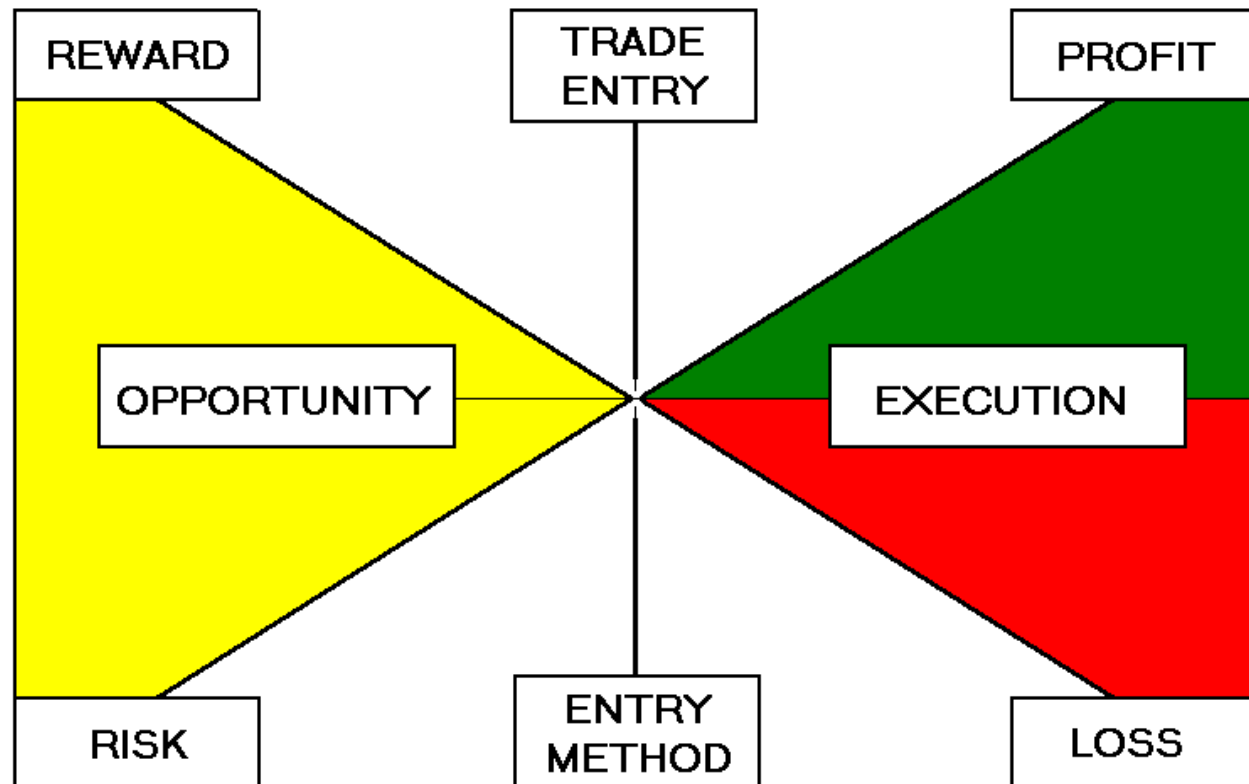
www.forex-warez.com
www.traders-software.com

Contacts

andreybbrv@gmail.com
andreybbrv@hotmail.com
andreybbrv@yandex.ru

Skype: andreybbrv

ICQ: 70966433



Opportunity

HARD *Right Edge*

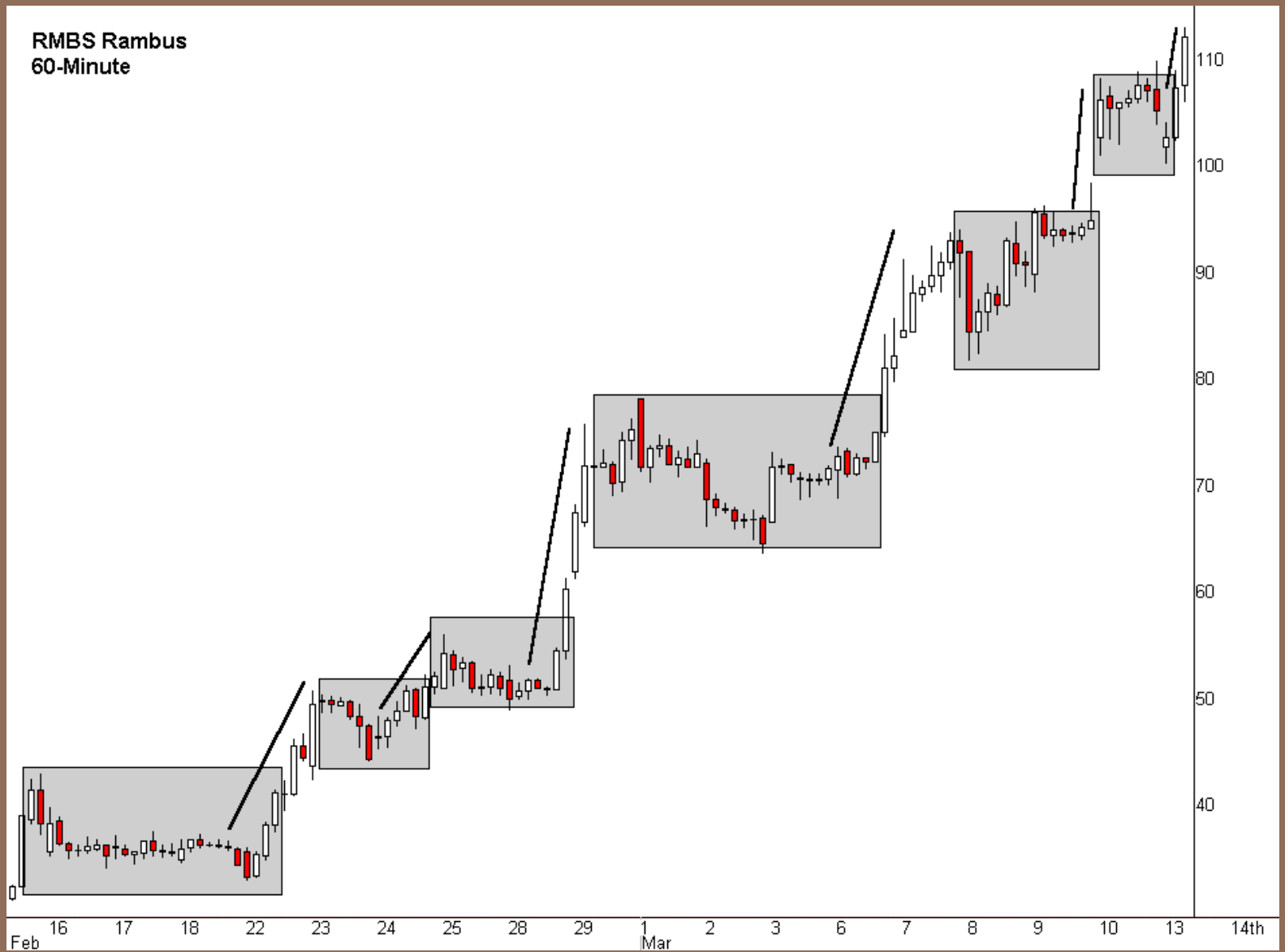
<http://www.hardrightedge.com>

TRADING SKILLS FOR A NEW GENERATION

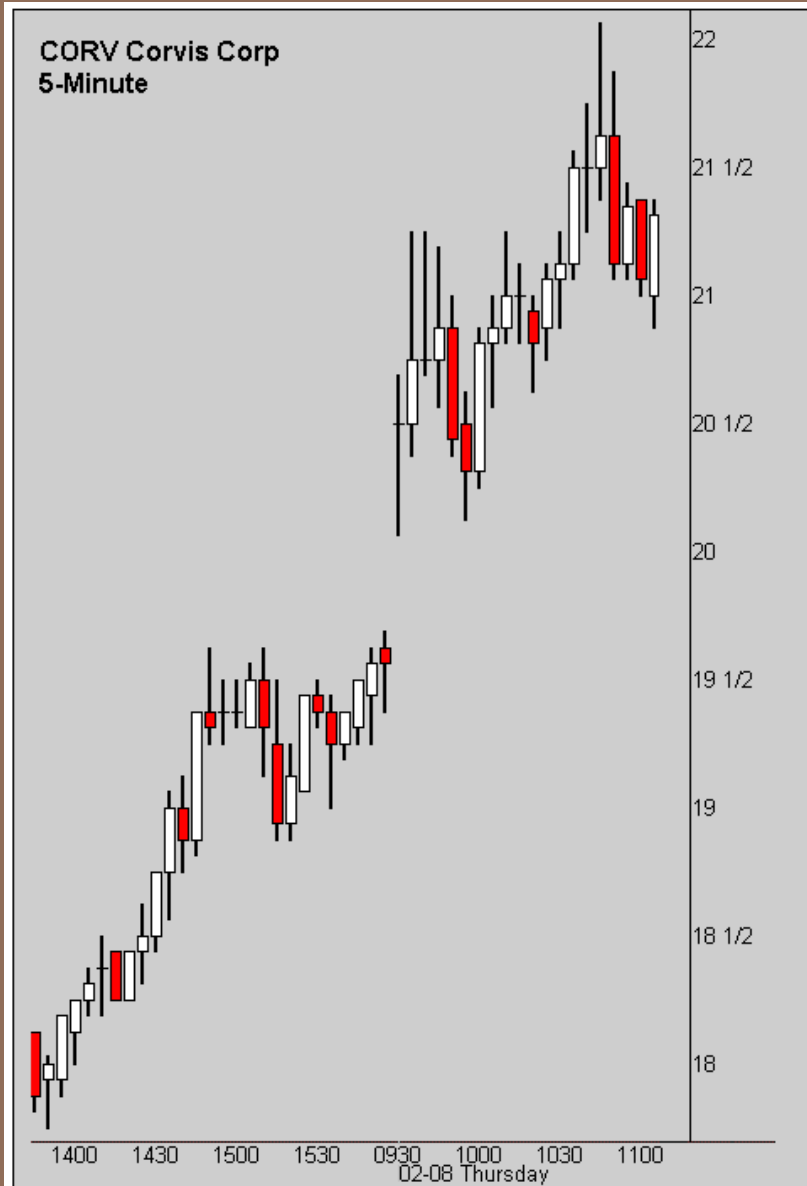
Opportunity

Slide 2-2

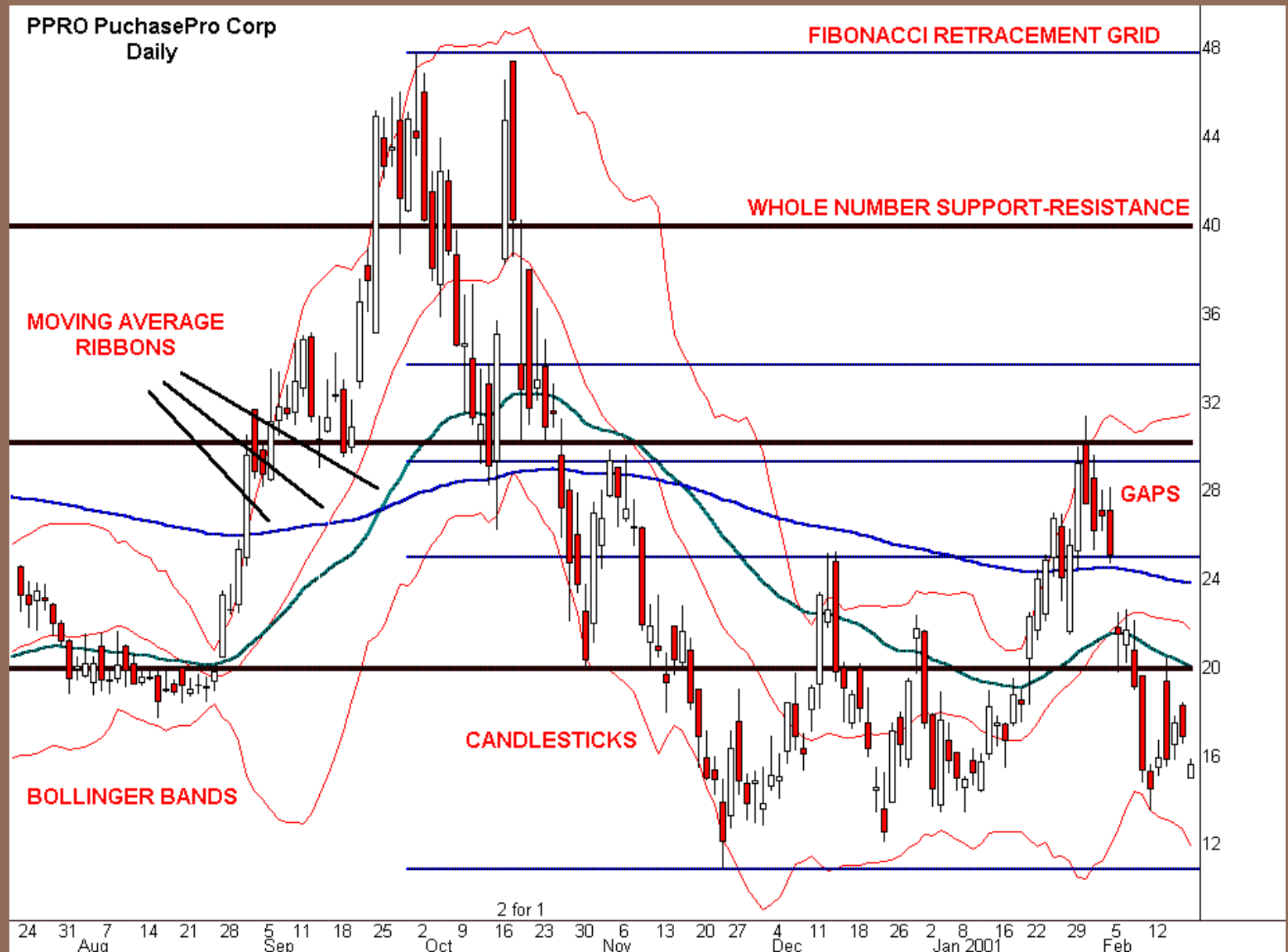
RMBS Rambus
60-Minute



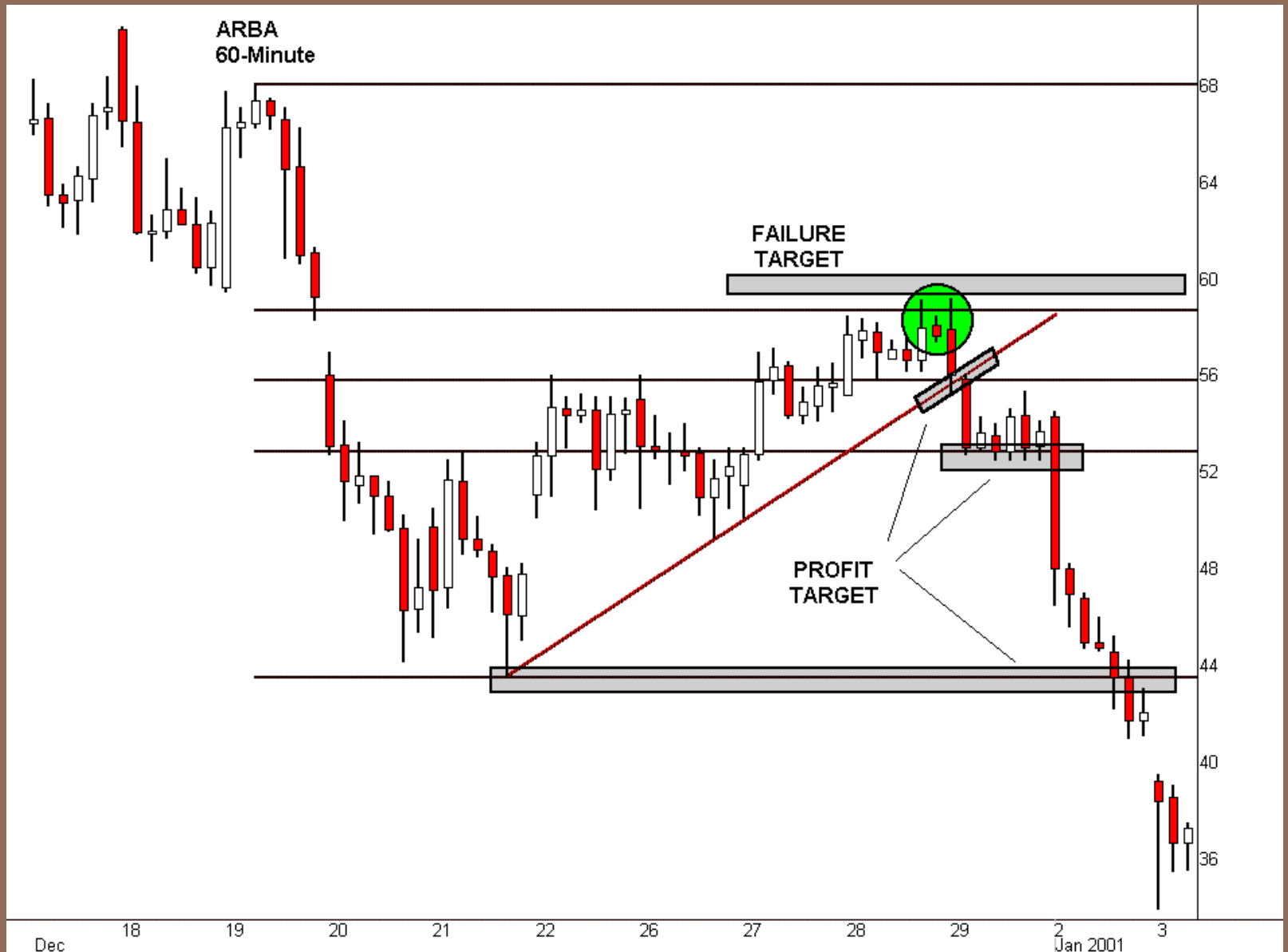
Slide 2-3



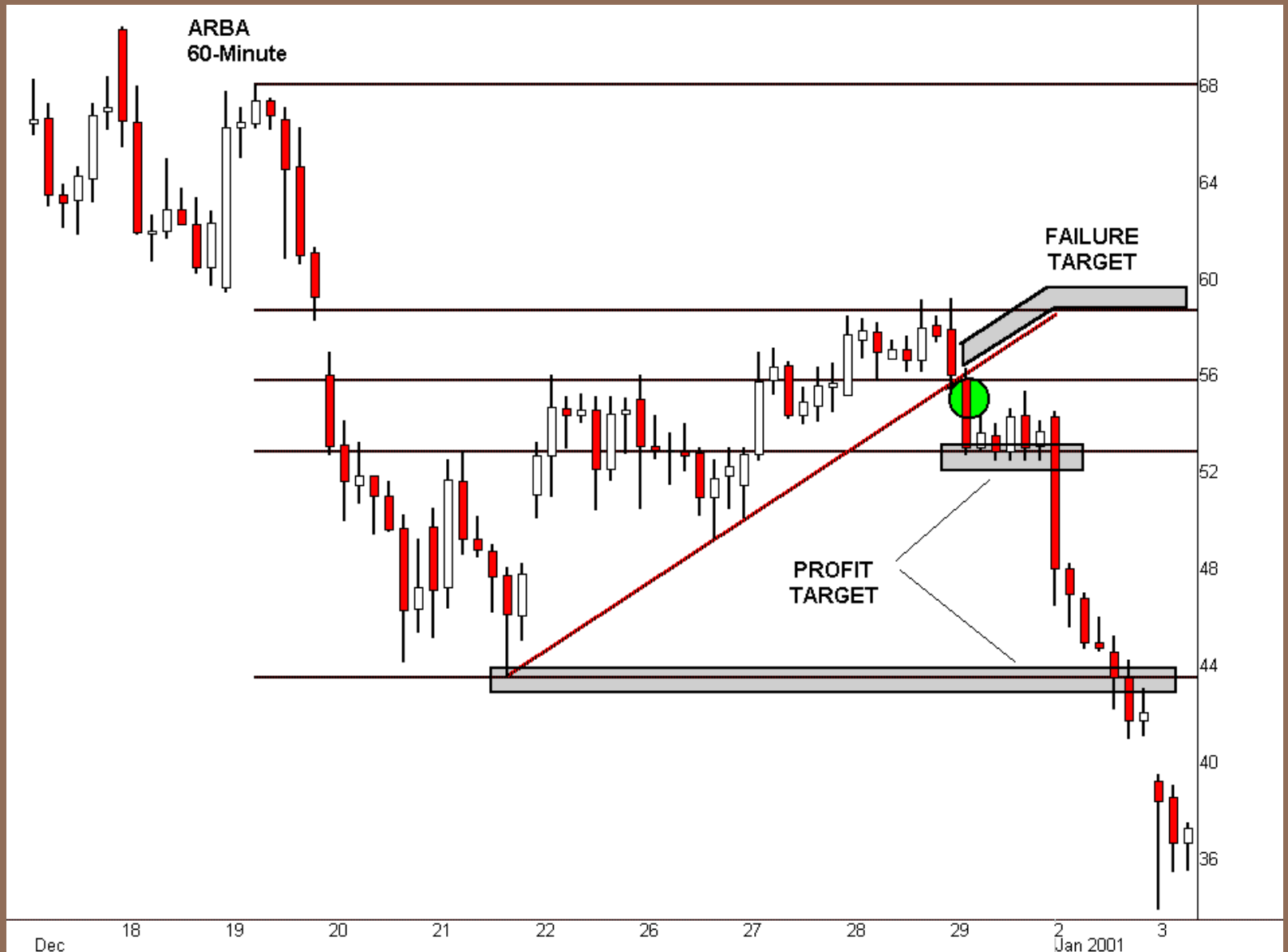
Slide 2-4



Slide 2-5



Slide 2-6



Entry

HARD *Right Edge*

<http://www.hardrightedge.com>

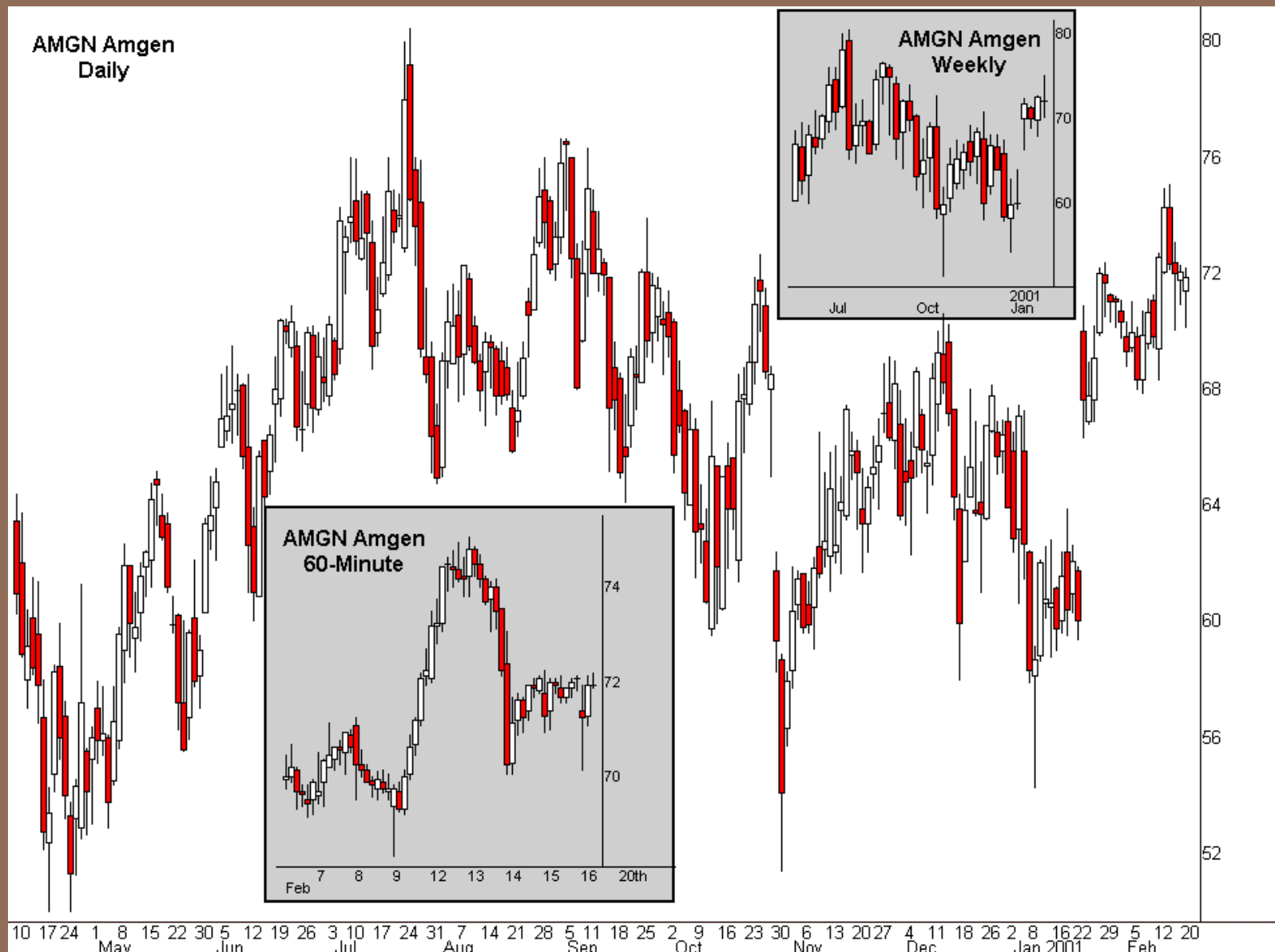
TRADING SKILLS FOR A NEW GENERATION

Entry

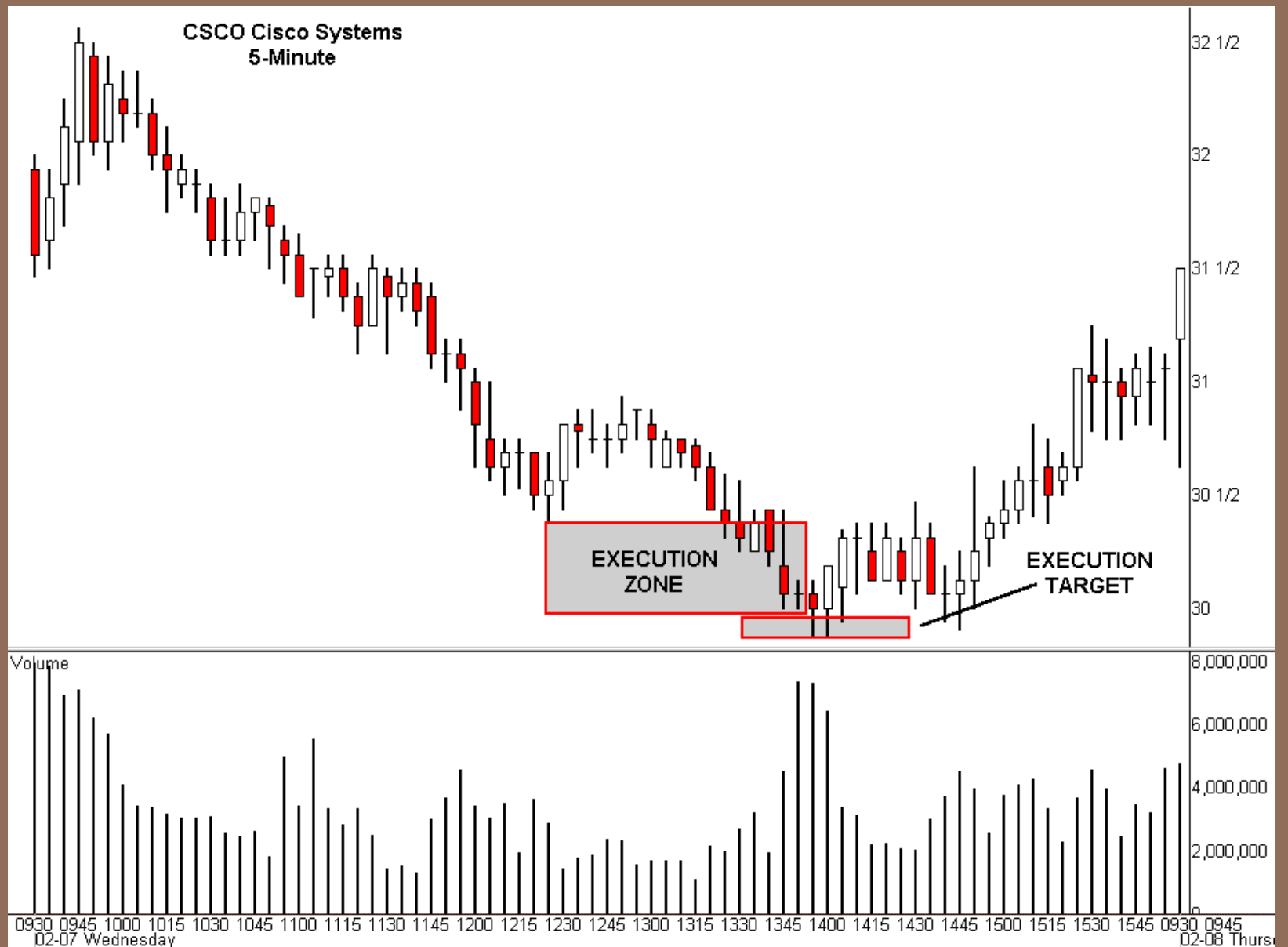
Slide 3-2



Slide 3-3



Slide 3-4



Method

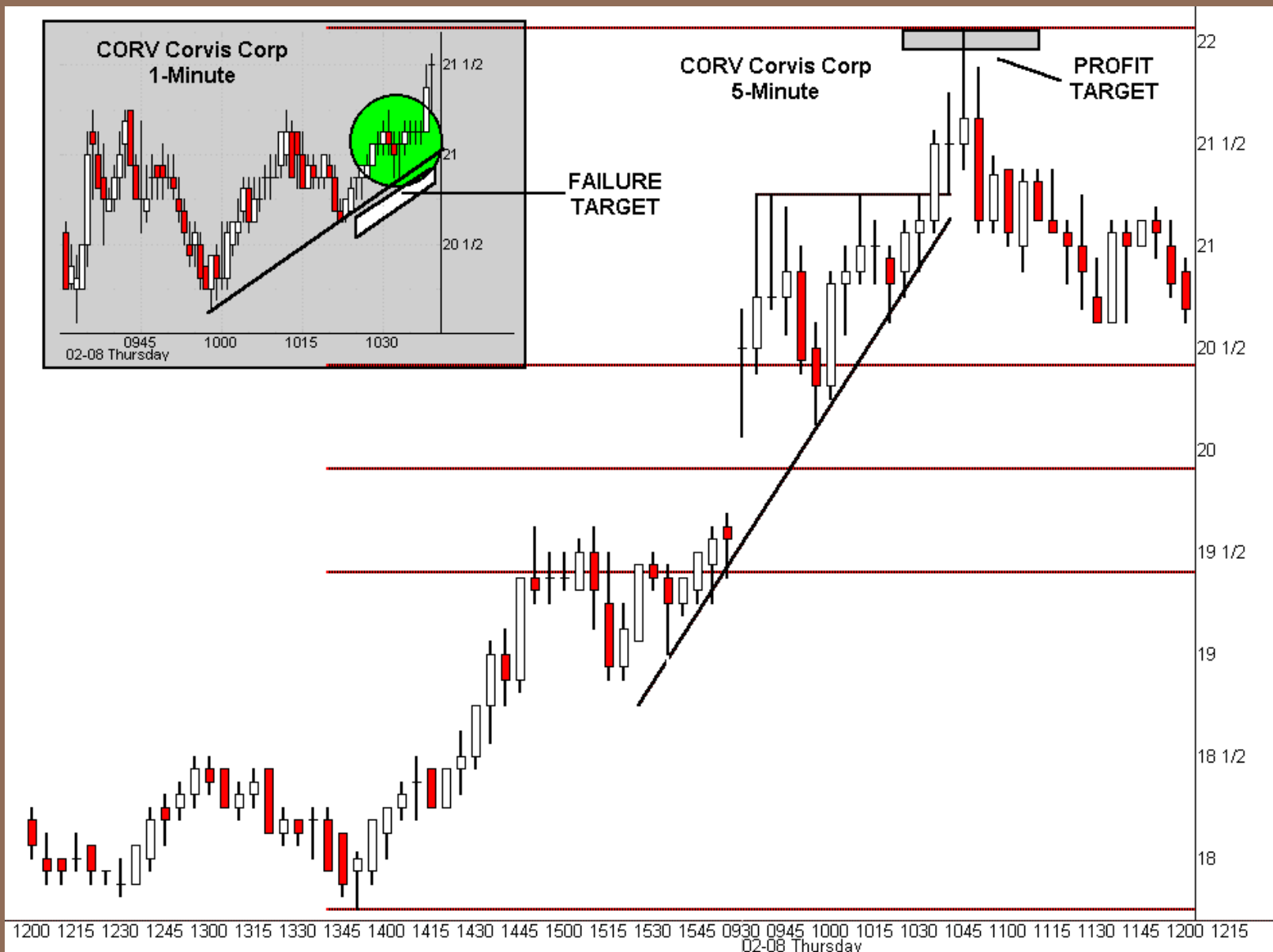
HARD *Right Edge*

<http://www.hardrightedge.com>

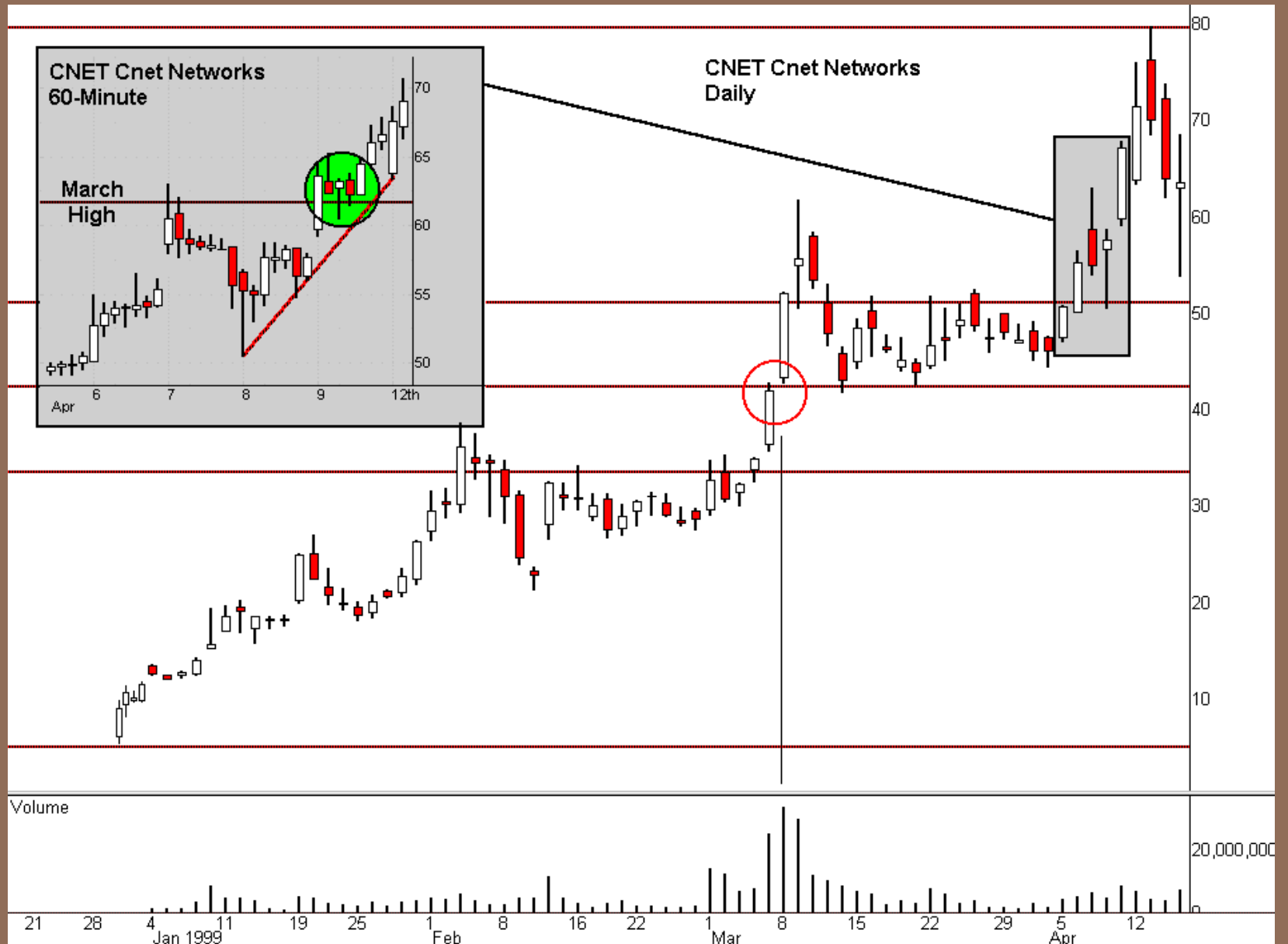
TRADING SKILLS FOR A NEW GENERATION

Method

Slide 4-2



Slide 4-3



Slide 4-4

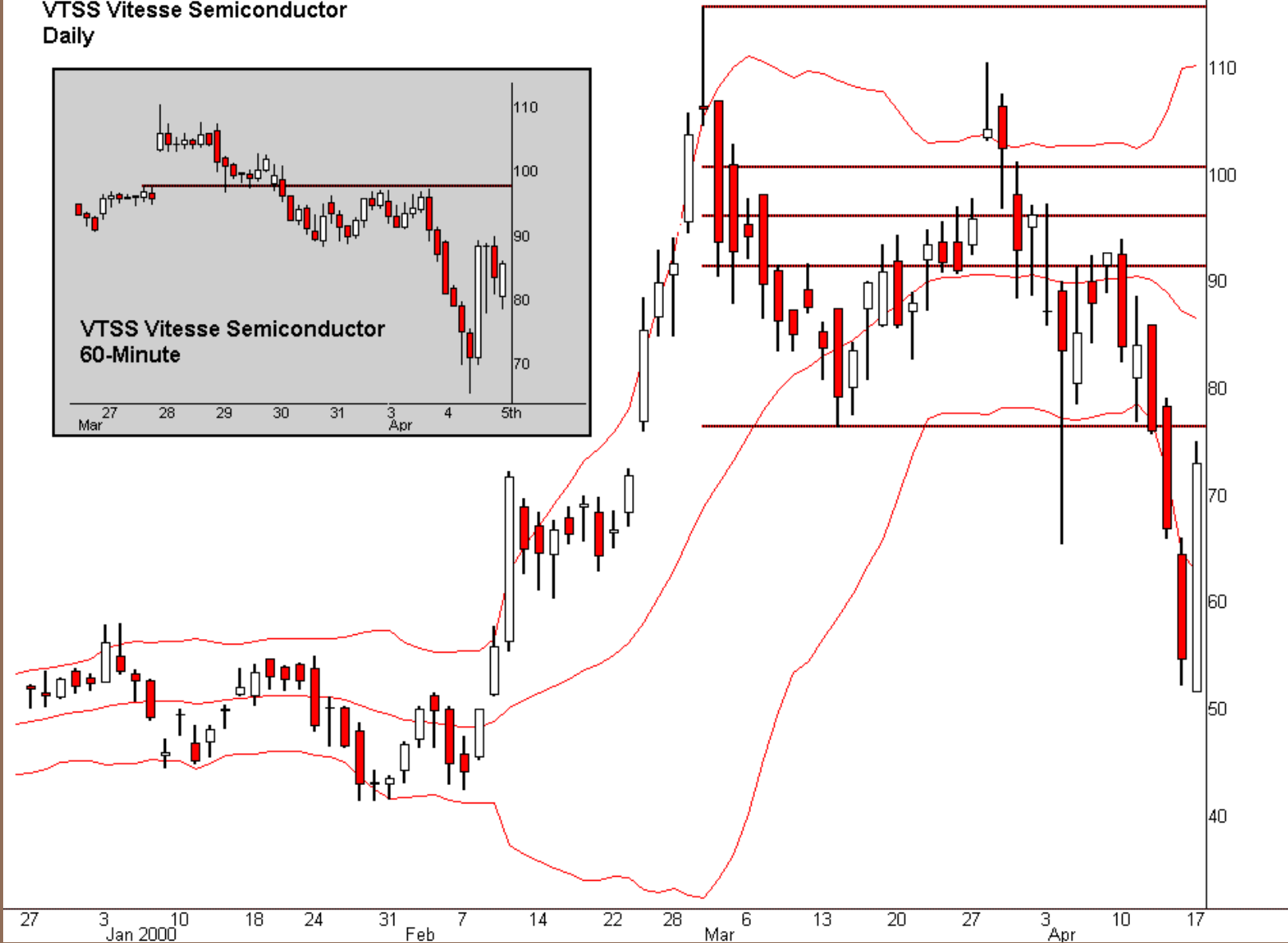
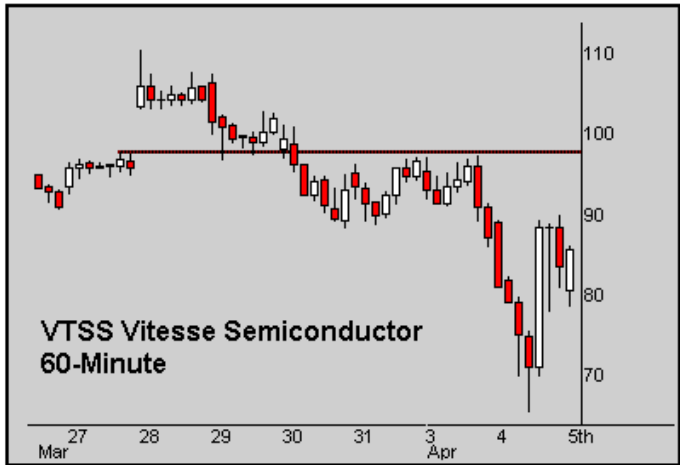


Slide 4-5



Slide 4-6

VTSS Vitesse Semiconductor
Daily



Management

HARD *Right Edge*

<http://www.hardrightedge.com>

TRADING SKILLS FOR A NEW GENERATION

Management

Slide 5-2

Sym	JDSU B	36 1/4	A	36 3/8	SBxA	16 x 17	Time	Price	Size
T	35 13/16 V	99,861,300 N		-9 5/16					
MMID	Bid	Size	Time	MMID	Ask	Size	Time		
REDI	36 1/4	1,600	18:29:27	ADAM	36 5/16	100	02/16 15:		
ISLD	36 1/4	1,000	18:29:43	ISLD	36 3/8	1,700	18:29:44		
INCA	36 1/4	700	18:28:45	INCA	36 3/8	500	18:28:50		
NITE	36 1/4	100	18:28:36	NITE	36 3/8	400	18:28:37		
MKXT	36	300	02/16 17	REDI	36 7/16	1,500	18:27:16		
MWSE	35 3/4	200	02/16 18	ARCA	36 9/16	200	02/16 18:		
DBAB	35 11/16	100	02/16 15	VKCO	36 9/16	100	02/16 15:		
ARCA	35 9/16	100	02/16 18	ATTN	37	2,000	02/16 17:		
ADAM	35 5/16	100	02/16 15	JPHQ	37	100	02/16 15:		
SUSQ	35 1/4	100	02/16 15	MHMY	37	100	02/16 15:		
PACS	35 1/4	100	02/16 15	ADVS	37 1/16	100	02/16 15:		
VKCO	35 1/4	100	02/16 15	SMCO	37 1/2	100	02/16 13:		
WACK	35 1/4	100	02/16 15	DBAB	37 3/4	200	02/16 13:		

Symbol	Last	Net	Trd Size	Bid	Ask	SizeBidxA	Open	High	Low	Volume
LMT	36.25	+0.56	11400	0.01	72.52	1 x 1	35.69	37.20	35.11	4,712,800
ANH	27.00	+0.36	600	0.01	54.04	1 x 1	26.65	27.40	23.65	699,900
BVSN	9 1/4	-13/16	600	9 3/16	9 5/16	4 x 36	9 9/32	9 11/16	9	5,004,000
AMGN	71 1/4	-13/16	1000	71 1/2	72 1/2	2 x 3	71 3/8	72 3/16	70 1/8	5,935,500
AMAT	48 7/32	-1 7/32	400	48 1/8	48 1/4	133 x 6	47 9/16	48 23/32	46 7/16	22,196,800
CMRC	24	-1 3/8	2200	23 13/16	24	4 x 52	23 5/16	24 3/4	23 1/16	5,058,500
CORV	14 5/16	-2 3/16	100	14 7/16	14 7/16	2 x 8	14 13/16	15 3/8	13 7/16	11,597,700
ARBA	21 1/2	-2 9/16	500	21 3/4	21 7/8	7 x 33	21 1/2	22 3/16	21 1/4	12,664,900
SCMR	23 3/16	-3 5/8	2300	23 9/16	23 5/8	6 x 13	23 9/16	25 13/16	22 7/8	11,248,100
NT	20.00	-9.75	100	20.26	20.45	2 x 3	19.90	24.00	19.00	121,499,400
JDSU	35 13/16	-9 5/16	100	36 1/4	36 3/8	16 x 17	38 9/16	39 1/8	35 7/16	99,861,300
BMCS	30 1/8	-7/8	300	28 15/16	31	14 x 10	29 9/16	30 1/4	29	3,457,100

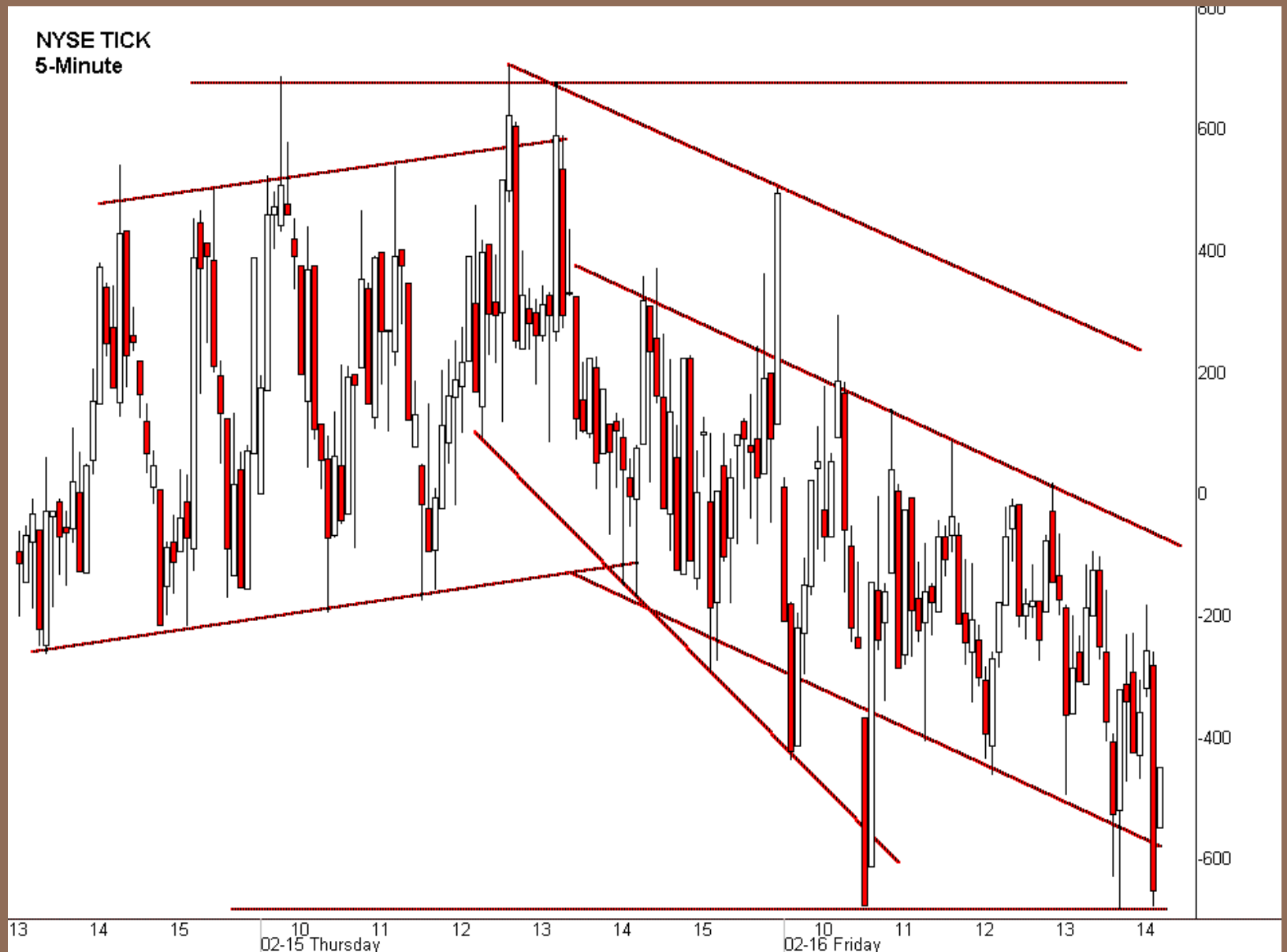
Slide 5-3

QCOM Qualcomm
60-Minute

Trend = 26 Hours
Range = 141 Hours



Slide 5-4



Exit

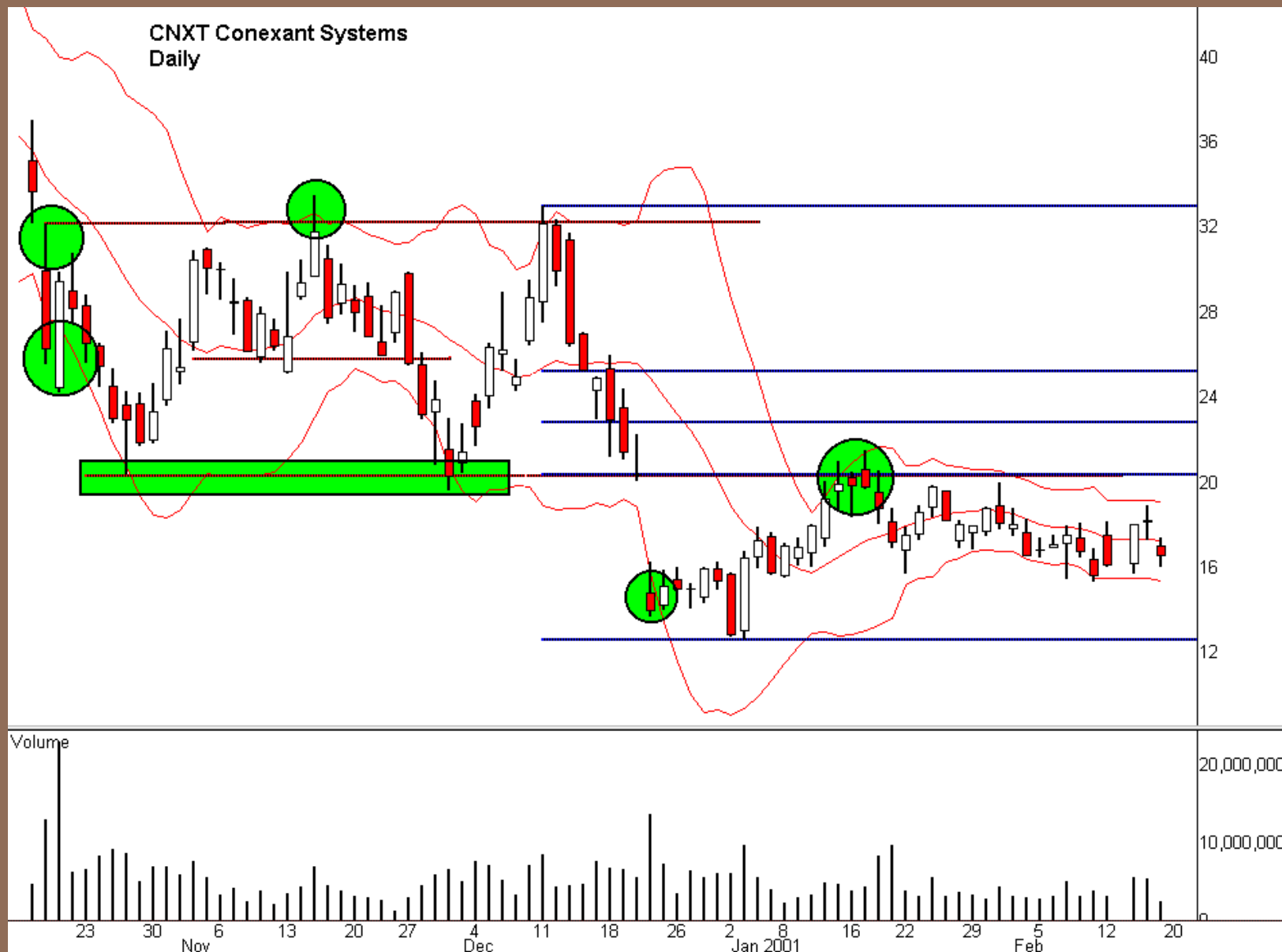
HARD *Right Edge*

<http://www.hardrightedge.com>

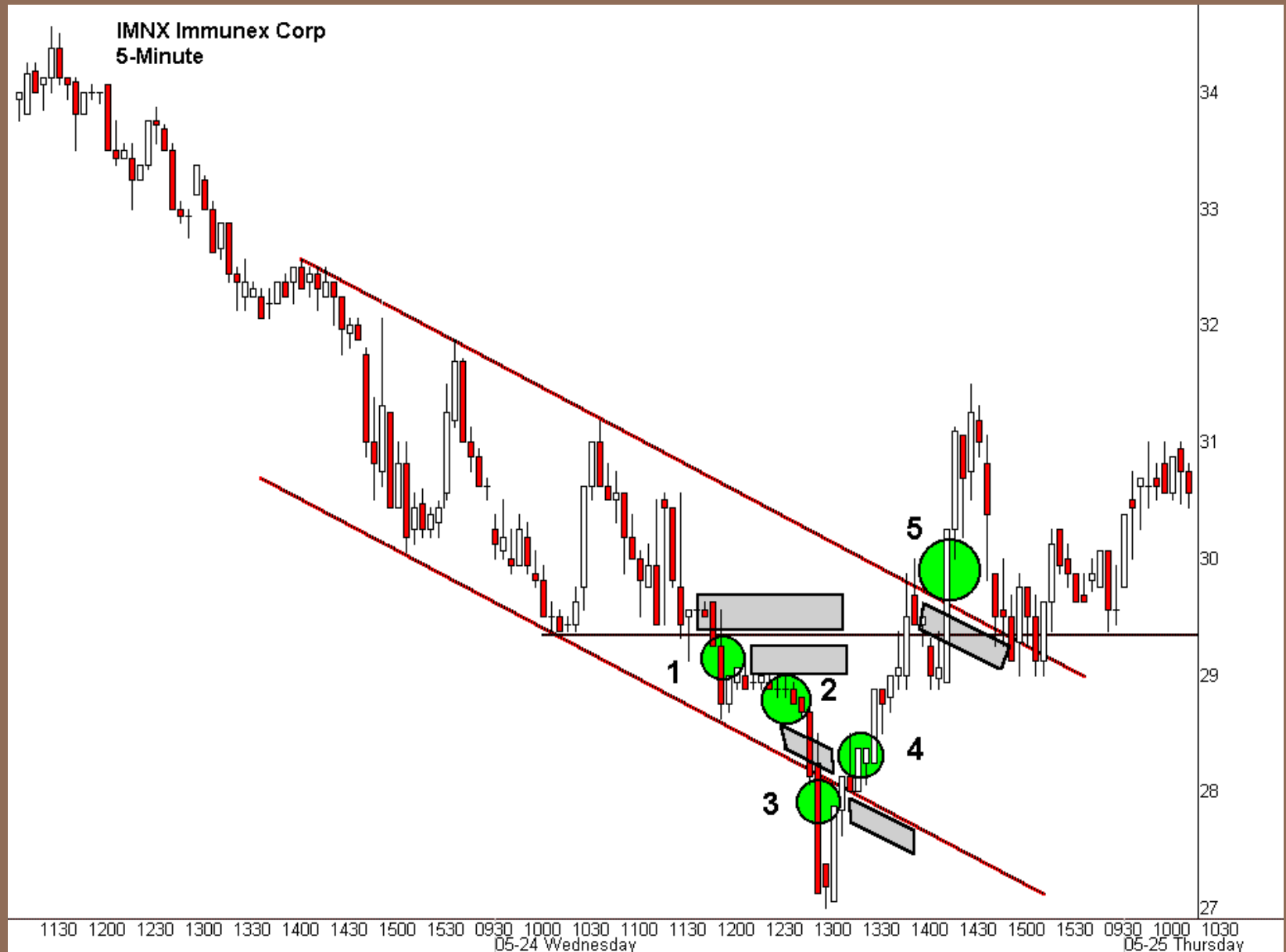
TRADING SKILLS FOR A NEW GENERATION

Exit

Slide 6-2

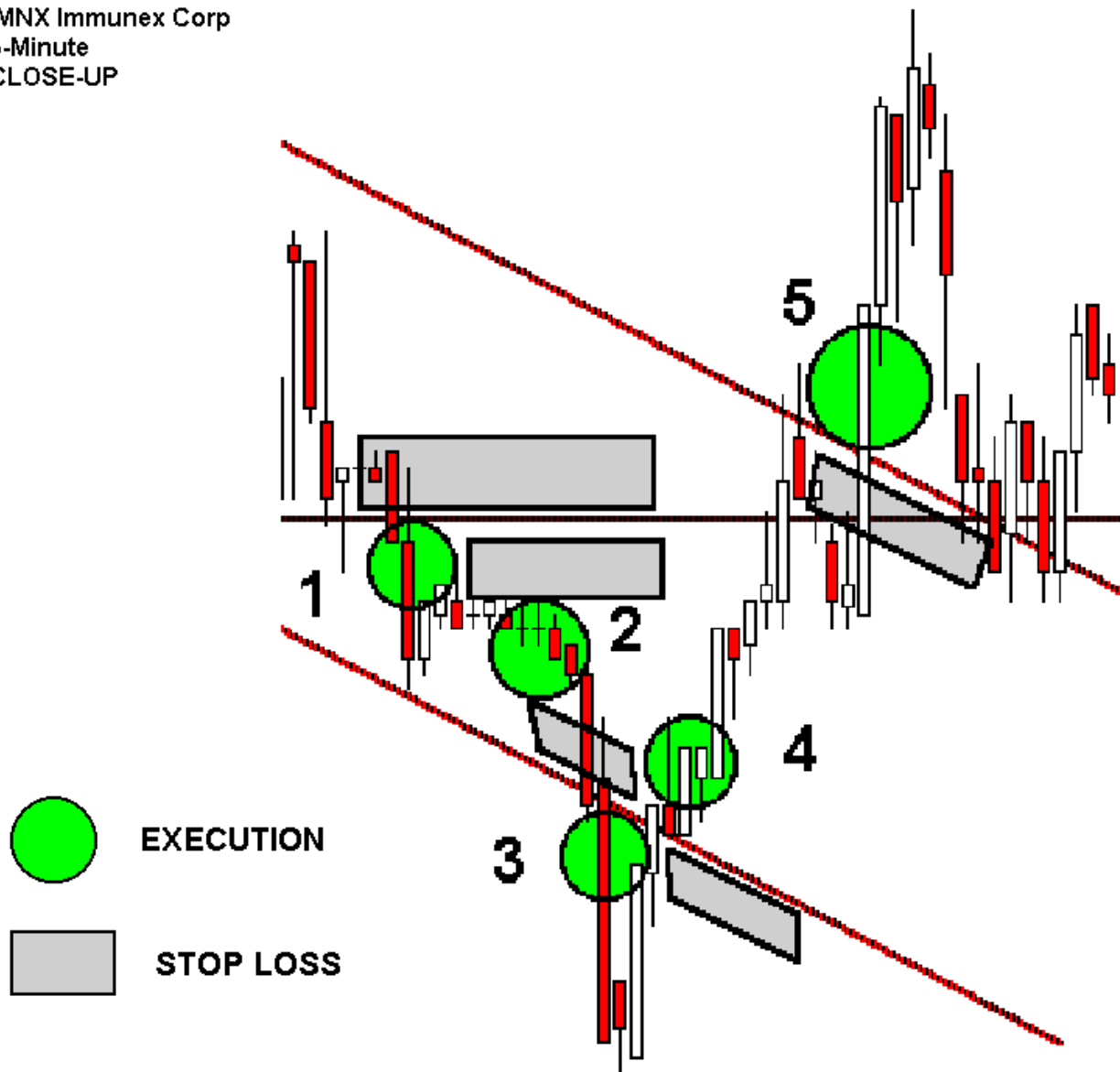


Slide 6-3



Slide 6-4

IMNX Immunex Corp
5-Minute
CLOSE-UP



Slide 6-5

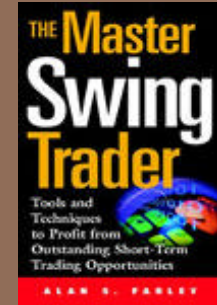
EMLX Emulex Corp
Daily



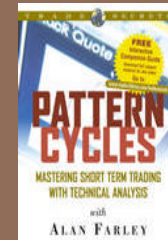
MORE

Also from Alan Farley-

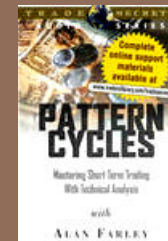
The Master Swing Trader: *Tools and Techniques to Profit from Outstanding Short-Term Trading Opportunities*



Pattern Cycles: *Mastering Short-Term Trading With Technical Analysis* **Video**



Pattern Cycles: *Mastering Short-Term Trading With Technical Analysis* **Audio**



Call 1-800-272-2855
or go to www.traderslibrary.com

Copyright © 2001 Traders' Library