

# C H A P T E R 5

## Dashboard and Scanner

### Starting the Dashboard

Open a new dashboard in one of three ways:

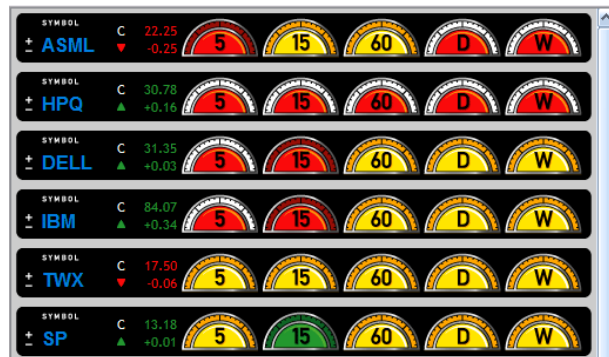


1. Click File, and then click New Dashboard, or
2. Click the Dashboard icon (pictured to left), or
3. Hold down the Ctrl key on the keyboard and press the D key at the same time (Ctrl + D).

Using any of the above methods will cause eSignal to open the Dashboard.

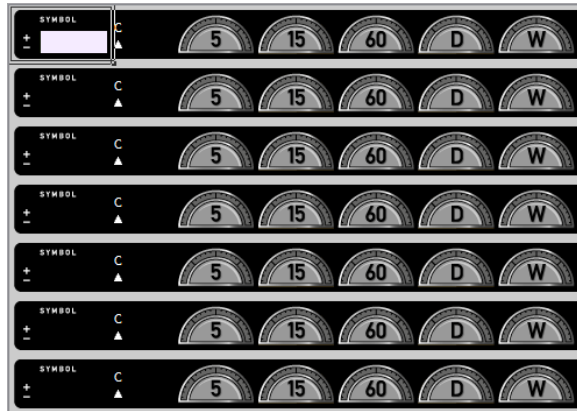
### The Dashboard Window

The Dashboard window displays gauges on the right hand side that indicate the status of a technical indicator or study for periods ranging from 5 minutes, 15 minutes, 60 minutes, 1 day, and 1 week. The window also has text boxes on the left to enter symbols.



## Entering Symbols into the Dashboard

To enter a symbol into the Dashboard, left-click below the word “SYMBOL” and to the right of the  $\pm$  symbol. This will open a text box, where you enter the symbol that you are tracking. You may enter multiple symbols and track more than one stock at a time.



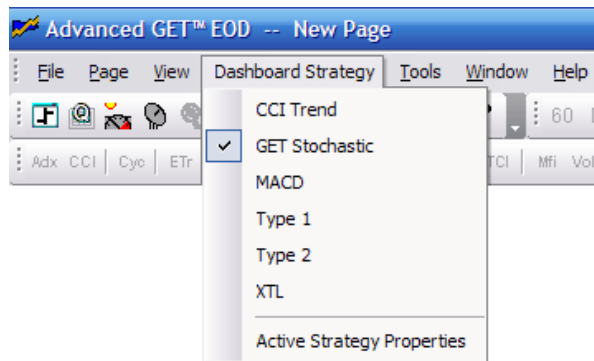
Once you have entered the symbol(s) you wish to track, the different gauges will light up. When a gauge is green, the technical indicator for the specified time period is in an oversold condition. When a gauge is yellow, the technical indicator is performing as expected for the time period. When a gauge is red, the stock is in an overbought condition for the specified time period.

## Dashboard Strategies

### Changing Strategies

The first time you open the Dashboard, the default Strategy will be GET Stochastic. Every subsequent time you open the Dashboard, the last Strategy used will be applied.

You can change the Dashboard Strategy by clicking **Dashboard Strategy** at the top of the eSignal window.



### CCI Trend Strategy

The Commodity Channel Index (CCI) is a price momentum indicator that measures the price excursions from the mean price as a statistical variation. It is used to indicate possible beginnings and endings of trends. The CCI works best on strongly uptrending or downtrending markets. The CCI can be used in two distinct ways:

If you are not looking at the CCI as a histogram, then when the CCI crosses the -100 value while moving up, a buy signal is generated. When the CCI crosses the +100 value while moving down, a sell signal is generated. This is called the “Normal CCI” method.

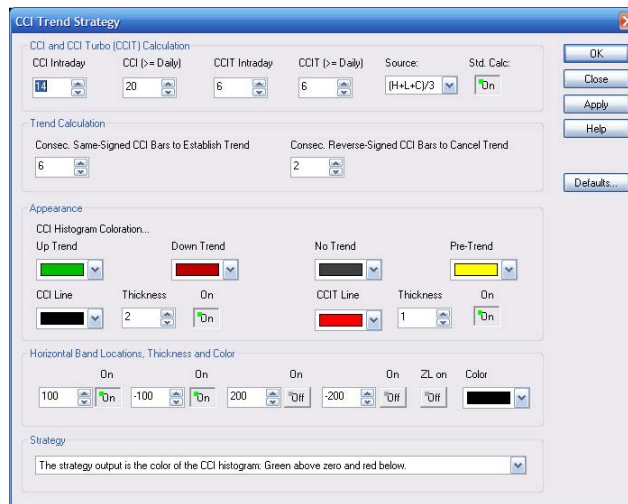
If you are looking at the CCI as a histogram, then when the CCI crosses the 0 value while moving up, a buy signal is generated. When the CCI crosses the 0 value while moving down, a sell signal is generated. This is called the “Zero CCI” method.

Both the Normal CCI and the Zero CCI methods are accepted methods of using the CCI.

## CCI Trend Properties

You can change the properties of the CCI Trend Strategy in the Dashboard using the CCI Trend Strategy properties window. You can open the CCI Trend Strategy properties window one of two ways:

When the Dashboard is open and the CCI Trend Strategy is selected, click the **Dashboard Strategy** menu and select **Properties** to open the CCI Trend Strategy properties window.



### CCI and CCI Turbo (CCIT) Calculation

The **CCI Intraday** number box indicates the period of CCI on intraday time frames.

The **CCI (>= Daily)** number box indicates the period of CCI on daily and larger time frames.

The **CCIT Intraday** number box indicates the period of the second CCI (CCI Turbo) on intraday time frames.

The **CCIT (>= Daily)** number box indicates the period of the second CCI (CCI Turbo) on daily and larger time frames.

The **Source** selection list allows you to choose what prices are used in the calculation of the CCI

**Open** = The CCI will be calculated using the open prices of the bars.

**High** = The CCI will be calculated using the highs of the bars.

**Low** = The CCI will be calculated using the lows of the bars.

**Close** = The CCI will be calculated using the closing prices of the bars.

**(H+L)/2** = The CCI will be calculated by using the value derived from adding the highs with the lows and dividing by 2.

**(H+L+C)/3** = The CCI will be calculated by using the value derived from adding the highs with the lows with the close and dividing by 3.

**(O+H+L+C)/4** = The CCI will be calculated by using the value derived from adding the opens with the highs with the lows and the close and dividing by 4.

The **Std. Calc.** button uses the standard CCI calculation.

### ***Trend Calculation***

Here you can set the number of **Consecutive Same-Signed CCI Bars to Establish a Trend** and the number of **Consecutive Reverse-Signed CCI Bars to Cancel a Trend**.

### ***Appearance***

The **CCI Histogram Coloration** selection boxes allow you to set the colors of the **Up Trend**, **Down Trend**, **No Trend**, and **Pre-Trend** bars. You can also set the color and thickness of the **CCI Line** and **CCIT Line**.

### ***Horizontal Bands Locations, Thickness and Color***

You can set the locations, thickness, and color of the **Horizontal Bands**.

### ***Strategy***

The **Strategy** dropdown list allows you to set the CCI Histogram color output.

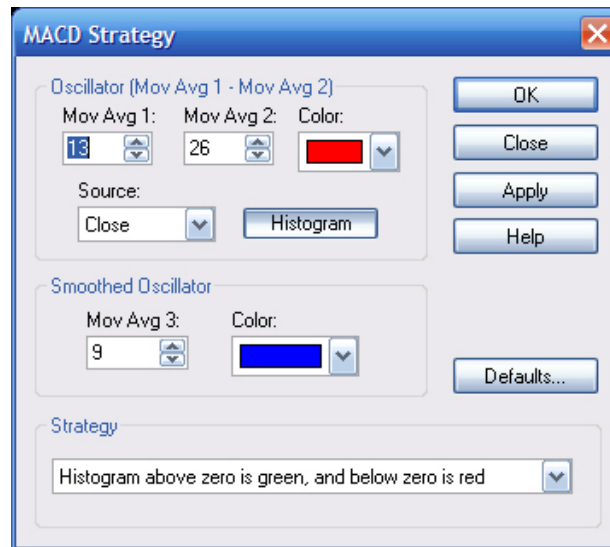
## MACD Strategy

The MACD consists of an oscillator that is the difference between two exponential moving averages and a moving average of that oscillator. It can be displayed as two lines representing the oscillator and its moving average or as a histogram showing the difference between the oscillator and its moving average.

A buy signal is given when the MACD graph is in an oversold condition below the origin and the MACD line crosses above the signal line. A sell signal (negative breakout) is given when the MACD graph is in an overbought condition above the origin and the MACD line falls below the signal line. The important crossovers of the MACD line to the signal line occur far from the zero line (the horizontal axis). The amount of divergence between the MACD line and the signal line is important; the greater divergence, the stronger the signal.

## MACD Properties

You can change the properties of the MACD Strategy in the Dashboard using the MACD Strategy properties window. When the Dashboard is open and the MACD Strategy is selected, click the **Dashboard Strategy** menu and select **Properties** to open the MACD Strategy properties window.



### **Oscillator**

The **Mov Avg 1:** number box allows you to set the number of intervals used to calculate the first Moving Average.

The **Mov Avg 2:** number box allows you to set the number of intervals used to calculate the second Moving Average.

The **Color** selection list allows you to change the color of the Combined Moving Average (or Oscillator).

The **Source** selection list allows you to choose what prices are used in the calculation of the MACD.

**Open** = The MACD will be calculated using the open prices of the bars.

**High** = The MACD will be calculated using the highs of the bars.

**Low** = The MACD will be calculated using the lows of the bars.

**Close** = The MACD will be calculated using the closing prices of the bars.

**(H+L)/2** = The MACD will be calculated by using the value derived from adding the highs with the lows and dividing by 2.

**(H+L+C)/3** = The MACD will be calculated by using the value derived from adding the highs with the lows with the close and dividing by 3.

**(O+H+L+C)/4** = The MACD will be calculated by using the value derived from adding the opens with the highs with the lows and the close and dividing by 4.

The **Histogram** button, when on, shows the MACD as a histogram, and as a normal MACD when turned off.

### **Smoothed Oscillator**

The **Mov Avg 3:** number box indicates the Moving Average of the Oscillator created by the first and second Moving Averages.

The **Color** selection list allows you to change the color of the third Moving Average.

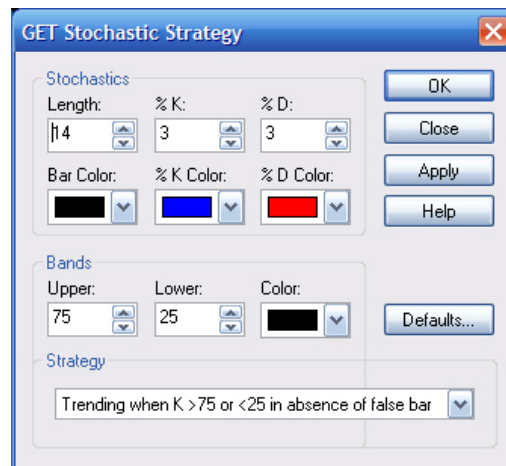
## GET Stochastic Strategy

The GET Stochastic is designed to indicate when the market is overbought or oversold. It is based on the premise that when a market's price increases, the closing prices tend to move toward the highs; and, conversely, when a market's price decreases, the closing prices move toward the lows. A Stochastic displays two lines: %K and %D. %K is calculated by finding the highest and lowest point in a trading period and then finding where the current close is in relation to that trading range. %K is then smoothed with a moving average. %D is a moving average of %K.

A sell signal is generated when you have a crossover of the %K and the %D, when both are above the band set at 75. A buy signal is generated when you have a crossover of the %K and the %D when both are below the band set at 25.

## GET Stochastic Properties

You can change the properties of the GET Stochastic Strategy in the Dashboard using the GET Stochastic Strategy properties window. When the Dashboard is open and the GET Stochastic Strategy is selected, click the **Dashboard Strategy** menu and select **Properties** to open the GET Stochastic Strategy properties window.





**Stochastics**

The **Length** number box indicates the number of bars used to find a moving average when calculating %K.

The **%K** number box indicates the period of the moving average that is used to smooth %K.

The **%D** number box contains the period of the moving average that is applied to %K to find %D.

The **Bar Color** selection list allows you to change the color of the False Bar.

The **%K Color** selection list allows you to change the color of the %K.

The **%D Color** selection list allows you to change the color of the %D.

**Bands**

The **Upper** and **Lower Bands** number boxes indicate at what level the bands will be drawn.

The **Bands Color** selection list allows you to change the color of the bands drawn on the GET Stochastic.

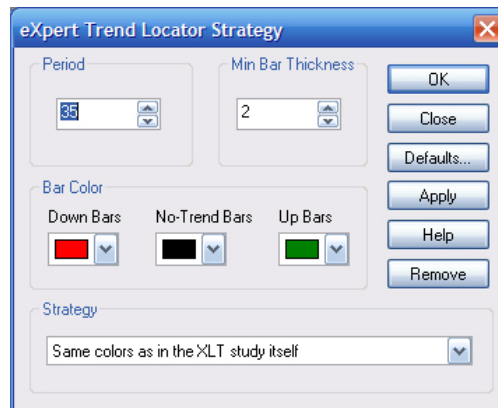
## XTL Strategy

The XTL (eXpert Trend Locator) is a Strategy that uses a statistical evaluation of the market to tell the difference between random market swings (noise) and directed market swings (trends).

The XTL is a simple but powerful tool that is not complicated to use. If a dashboard gauge is green in color, then the trend is up. If a dashboard gauge is yellow in color, the state is neutral, as there is no perceived trend. If a dashboard gauge is red in color, then the trend is down. If there is not enough data (see **Period** in the Properties, below), then the gauge will be gray with a white rim.

## XTL Properties

You can change the properties of the XTL Strategy in the Dashboard using the XTL Strategy properties window. When the Dashboard is open and the XTL Strategy is selected, click the **Dashboard Strategy** menu and select **Properties** to open the XTL Strategy properties window.



The **Period** number box indicates the number of bars used to calculate the XTL.

The **Min Bar Thickness** number box sets the thickness of the chart's lines.

### Bar Color

The **Down Bars** selection list allows you to change the color of the chart's lines (or bars) during down trends.

**Type 1 Strategy**

The Type 1 Trade is used for entering at the end of a Wave 4 Retracement. The Type 1 Trade is a Trend-Following Trade, or Continuation Trade. For more information about Type 1 Trades, see *Chapter 16: Type One and Type Two Trades*.

**Type 1 Properties**

The Type 1 Strategy has no editable parameters.

**Type 2 Strategy**

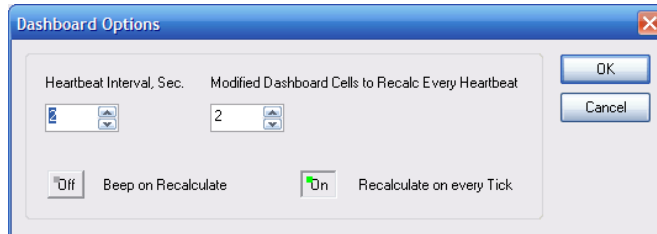
The Type 2 Trade is used for going against the trend at the end of a Wave 5 rally or decline. The Type 2 Trade is a Contra Trend, or Counter Trend Trade. For more information about Type 2 Trades, see *Chapter 16: Type One and Type Two Trades*.

**Type 2 Properties**

The Type 2 Strategy has no editable parameters.

## Dashboard Options

To change options like heartbeat recalculation intervals, click **Dashboard Strategy** and then click **Dashboard Options**. The Dashboard Options window opens.



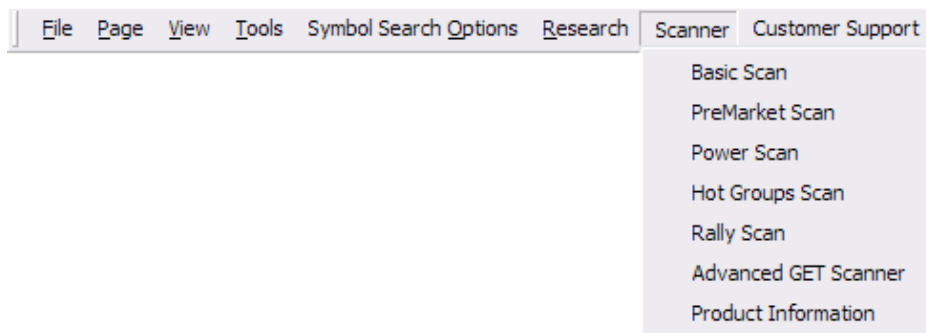
The **No-Trend Bars** selection list allows you to change the color of the chart's lines (or bars) during neutral trends.

The **Up Bars** selection list allows you to change the color of the chart's lines (or bars) during up trends.

## Scanners

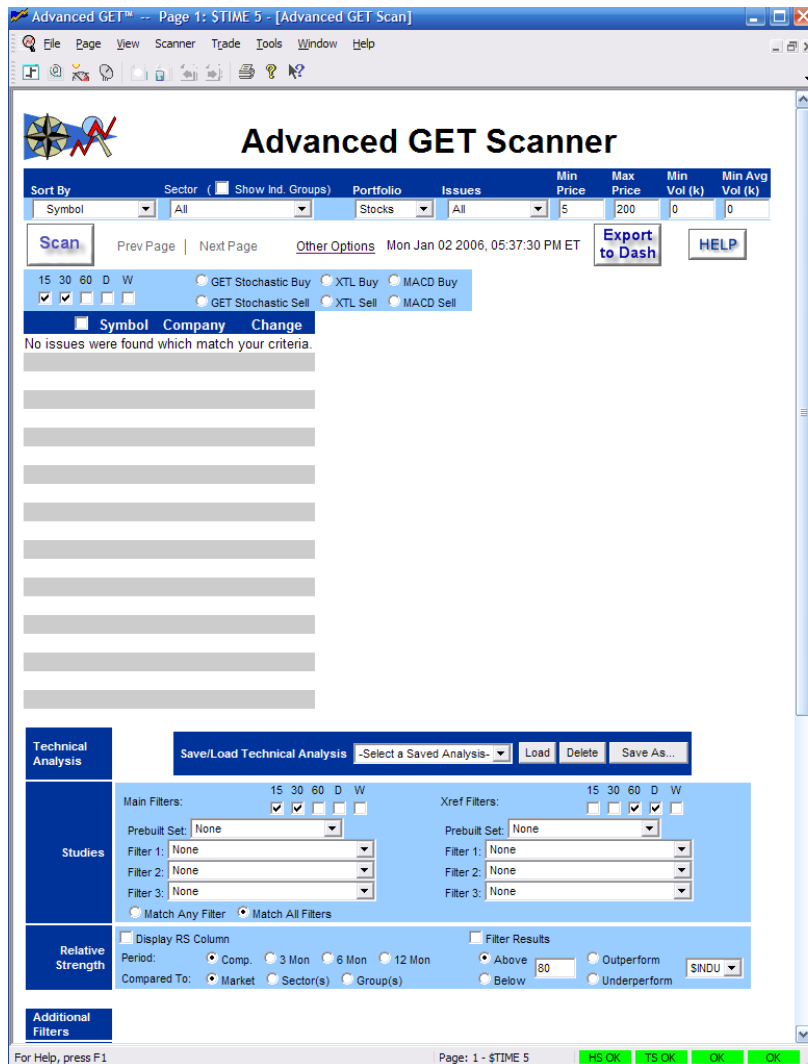
The scanners automatically apply technical indicators and fundamental criteria in real time to the entire market to find possible trading situations. They allow you to control your results by displaying information that is critical to you. These displays include company name, price change or percent change, daily or year high and low, volume or average volume, bid/ask spread, and market capitalization. You can also access charts, news, and company research directly from your scan page.

To access the scanners, use the **Scanner** menu.



## Advanced GET Scan

To open the Advanced GET Scan, click **File, New Scanner**, and then click **Advanced GET Scan**. The Advanced GET Scanner Window opens.



**Sort By** allows you to sort the scan by Volume, Gainers/Losers, High/Low and Miscellaneous (Symbol, Relative Strength, 3 Day Average Range).

**Sector** allows you to set the market sector you wish to scan. The main sectors are: Capital Goods, Conglomerates, Consumer Cyclical, Consumer/noncyclical, Energy, Financial, Healthcare, Services, Technology, Transportation, and Utilities.

**Portfolio** allows you to set the type of portfolio. The types of portfolios available are: Stocks, Optionable, and Indices.

### Issues

**ALL** all stocks

**IPO (<2 Wks)** stocks that have IPO'd within the last 2 weeks

**IPO (2 Wks - 3 Mos)** stocks that have IPO'd between 2 weeks and 3 months ago

**IPO (3 Mos - Year)** stocks that have IPO'd between 3 months and one year ago

**Min Price** - allows you to set the Minimum price to scan.

**Max Price** - allows you to set the Maximum price to scan.

**Min Vol (k)** - allows you to set the minimum volume of shares traded (in thousands)

**Min Avg Vol (k)** - allows you to set the minimum average volume of shares traded (in thousands)

Once you have selected the parameters, click **Scan** to create a scan. If you are satisfied with the results, click **Export to Dash** to export the data to the Dashboard.

## **Advanced GET Scan Advanced Options**

The Advanced GET Scan allows advanced users to filter a scan using other advanced options. You can use Technical Analysis and Additional Filters as well as set how the scan is displayed. This section can be found by scrolling down the Advanced GET Scan page or by clicking **Other Options** under the top toolbar.

### **Technical Analysis**

The Technical Analysis section allows you to use Studies and Relative Strength to filter the scan. You can also load previously saved Technical Analysis. Click **Save As** to save the current Technical Analysis.

The **Studies** section allows you to set main and x-ref filters using time (15 minutes, 30 minutes, 1 day and 1 week), prebuilt sets, and up to 3 different studies. Select either **Match Any Filter** or **Match All Filters**.

### **Relative Strength**

**Display RS Column** shows the selected Relative Strength information in the results table. Set a **Period** of 3 months, 6 months, 12 months or a composite of all of these. You can compare to either just issues within the same group, the same sector, or against all other issues in the market.

**Filter Results** filters the results above or below a certain value and to undervalue or overvalue.

### **Additional Filters**

The Additional Filters section allows you to use Market Cap, Average Range, and Gainer/Loser to filter the scan.

**Market Cap** allows you to set any or all of the following caps: Micro Cap, Small Cap, Mid Cap, Large Cap, Huge Cap.

**Average Range** allows you to set the minimum and maximum 3 day average range between \$.25 and \$5.00.

**Gainer/Loser** allows you to set the scan to Show Change From Previous Close, Open, Previous Week, Previous Month, and Previous Quarter. You can also filter by Day, Week, Month, and Quarter.



### **Display Options**

Set all the **Columns** you wish to display in the scan.

#### **Emphasis**

You can emphasize issues by when the parameters have changed or by time frame convergence.

#### **Misc.**

Here you can set the scan to auto refresh every 2, 5, 10, or 15 minutes. You can also set the scan to display options below the results table.

#### **Table**

Here you can set the number of rows and font size of the table.

#### **Export**

Click **Export Checked** to export only the items you have selected to a save file. Click **Export All** to export all options to a save file.

#### **Options: Chart**

**# Rows** allows you to set the number of issues that are displayed at one time.

**Font Size** allows you to change the size of the text in the results table

**Saved Scans** allows you to save all your current settings and restore them later. You may have up to 10 saved scans.

# **Notes**