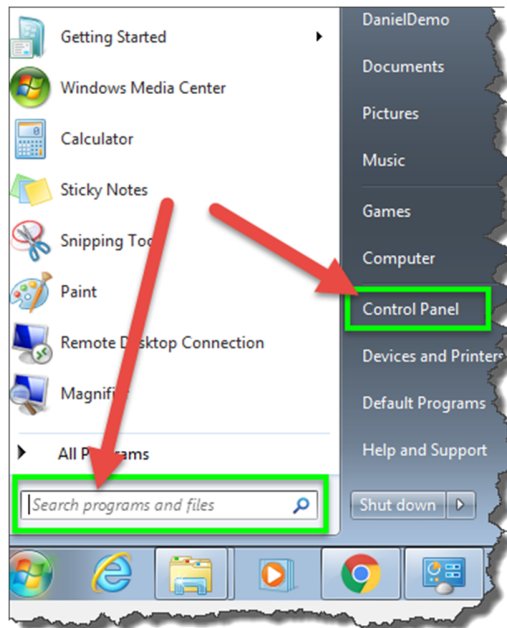


TTP_MasterSuitePRO Update Installation Instructions

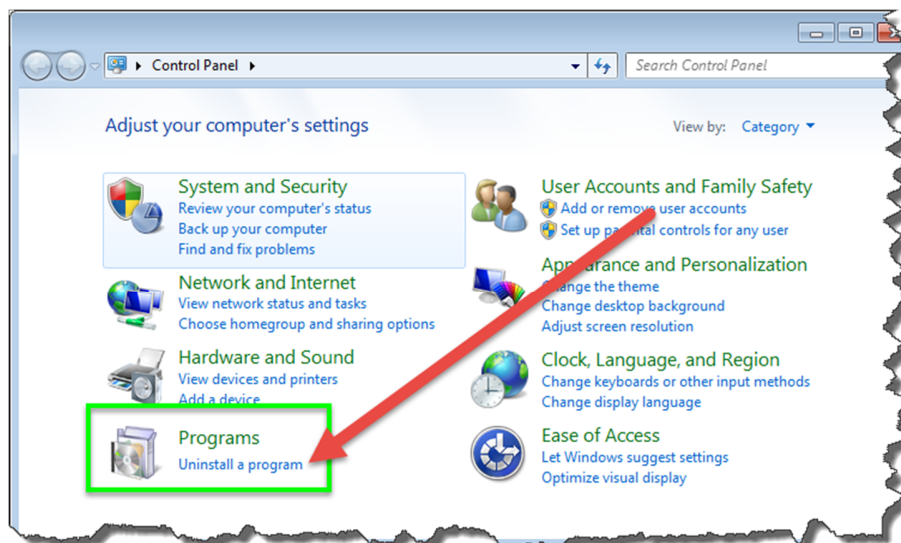
1. Uninstall all old software:

- a. **With NinjaTrader CLOSED**, from your computer's "Start Menu", find the "Control Panel" either by searching for "Control Panel" in the search box, or finding it in the list on the right-side

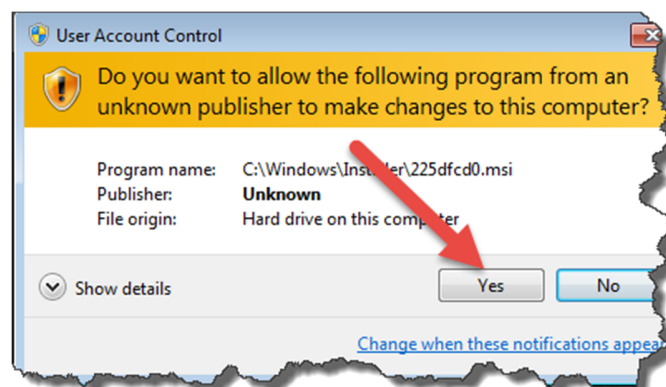
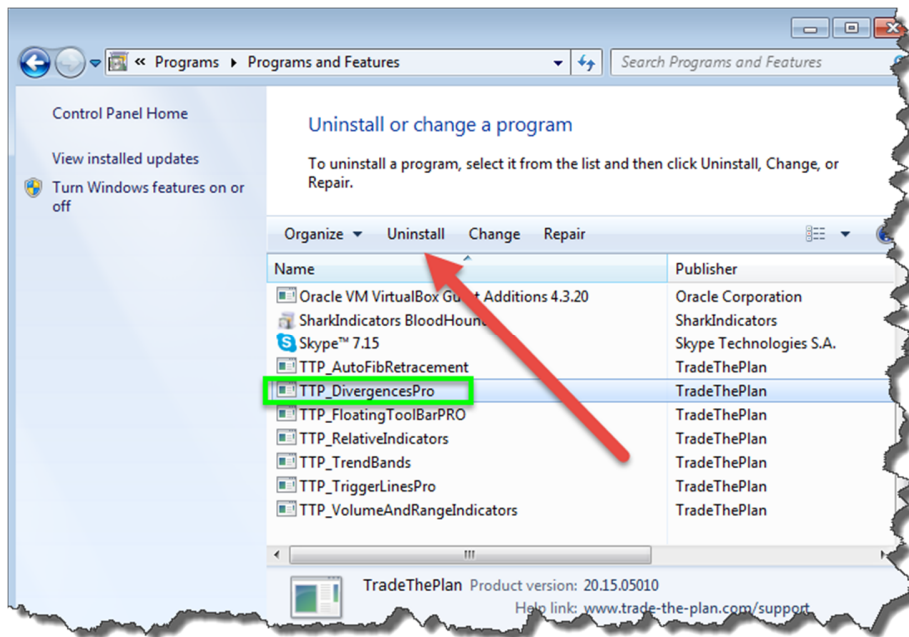


b. From the Control Panel:

- i. Left-click "Uninstall a program"



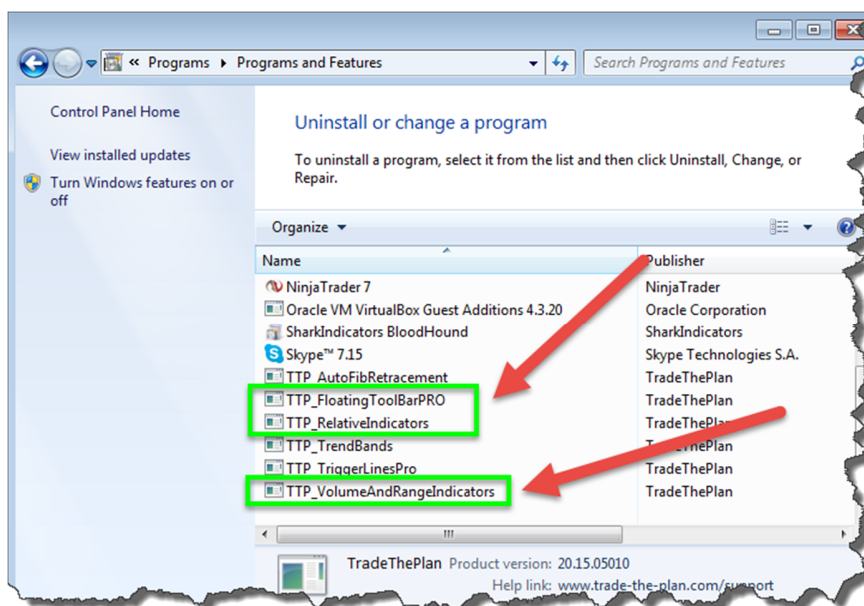
- ii. Then find "TTP_DivergencesPRO" in the list and left-click to select it
- iii. Then left-click "Uninstall"
- iv. If it asks you "Are you sure you want to uninstall...", left-click "Yes"
- v. A small "User Account Control" window may appear asking, "Do you want to allow the following program from an unknown publisher to make changes to this computer?" Left-click "Yes" to uninstall program and associated template files.



c. Repeat the above steps to uninstall each of the following TTP_... programs

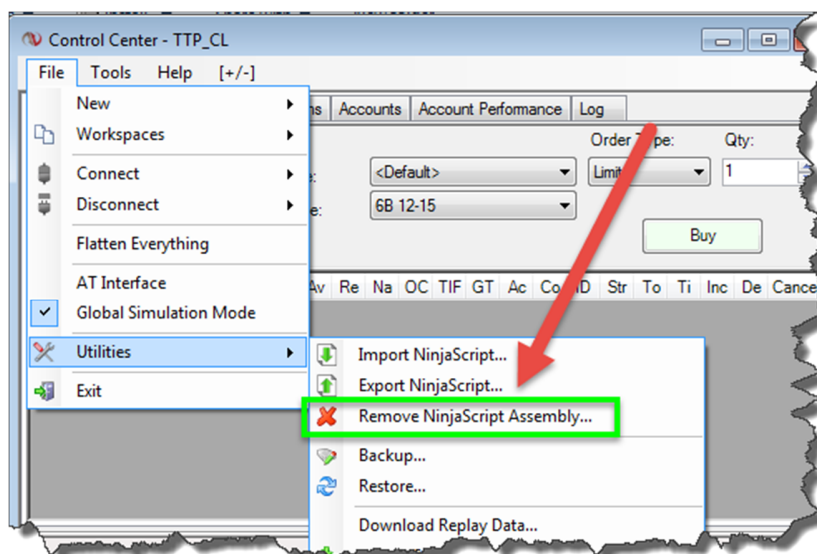
- i. TTP_FloatingToolBarPRO
- ii. TTP_RelativeIndicators
- iii. TTP_VolumeAndRangeIndicators

NOTE: TTP_DivergencesPRO2 and TTP_FloatingToolBarPRO may or may not be in the list depending upon whether you used the installer to install them or if you used the zip file to import them via NinjaTrader's Control Center > File > Utilities > Import NinjaScript feature. If they are not in the list, they must be removed via the NinjaTrader7 Control Center > File > Utilities > Remove NinjaScript Assembly feature.

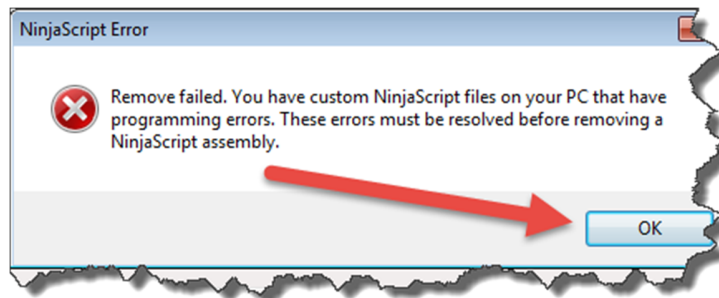


2. After uninstalling the above TTP_... programs, open NinjaTrader7 (no need to connect to data)

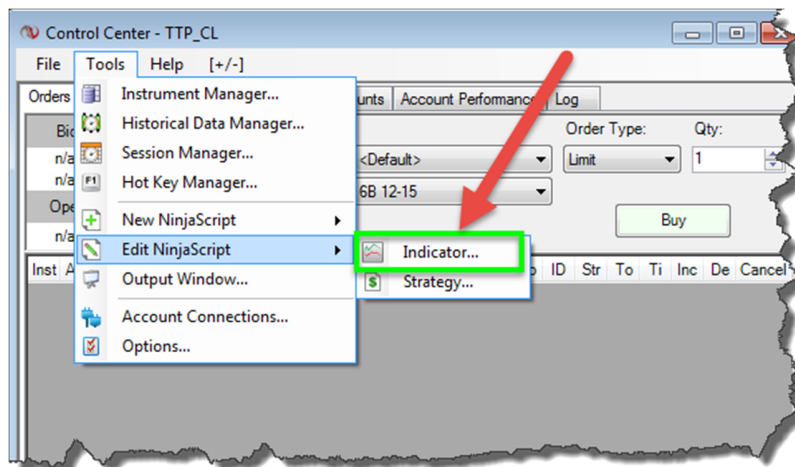
- a. From the NinjaTrader Control Center, left-click on File > Utilities > Remove NinjaScript Assembly...



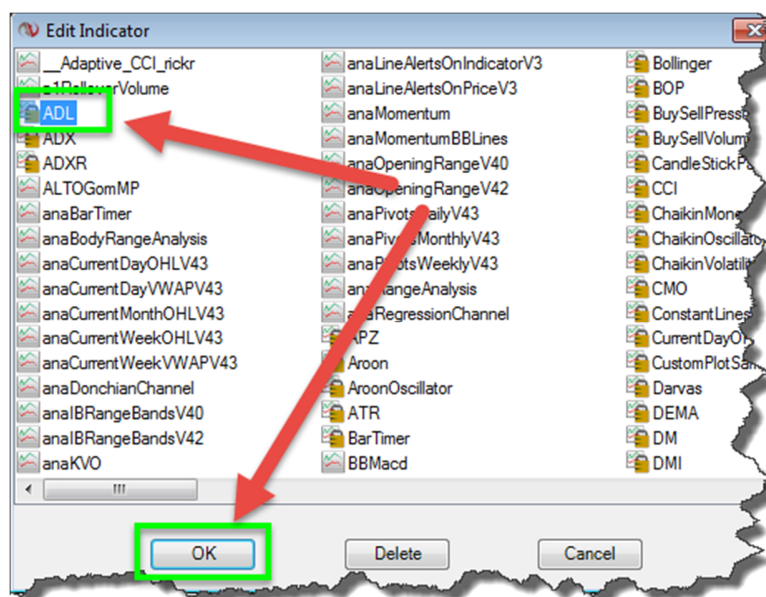
- b. If you receive the error message below that you have NinjaScript files with programming errors, left-click "OK" and then following the subsequent steps below:



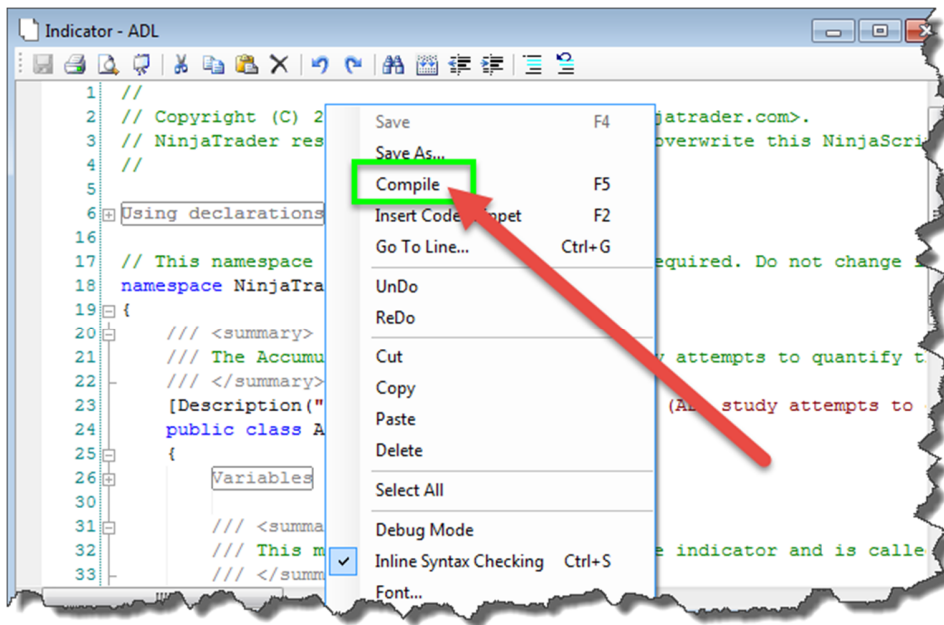
- i. From the NinjaTrader7 Control Center, left-click on Tools > Edit NinjaScript > Indicator



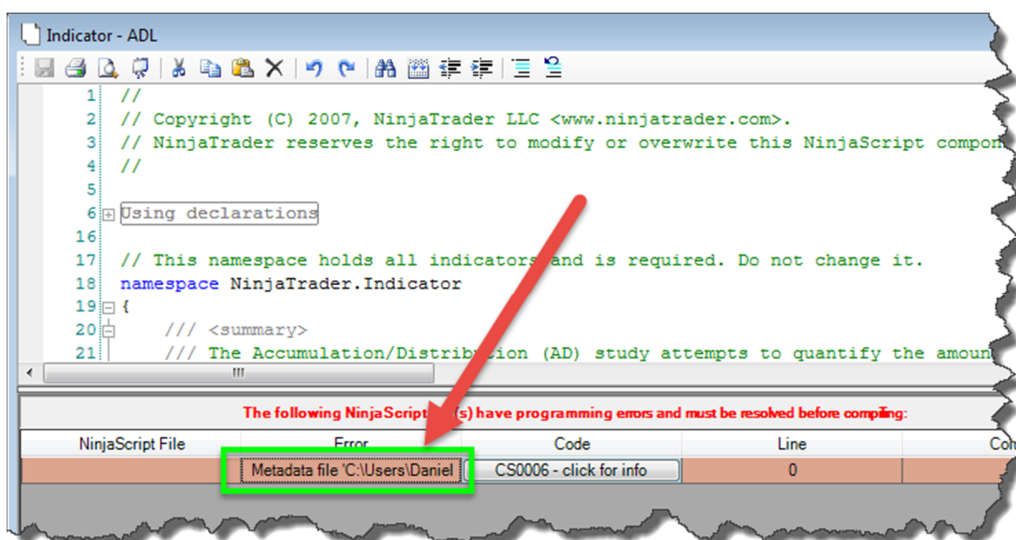
- ii. Left-click on any indicator file, then left-click "OK" to open the NinjaScript



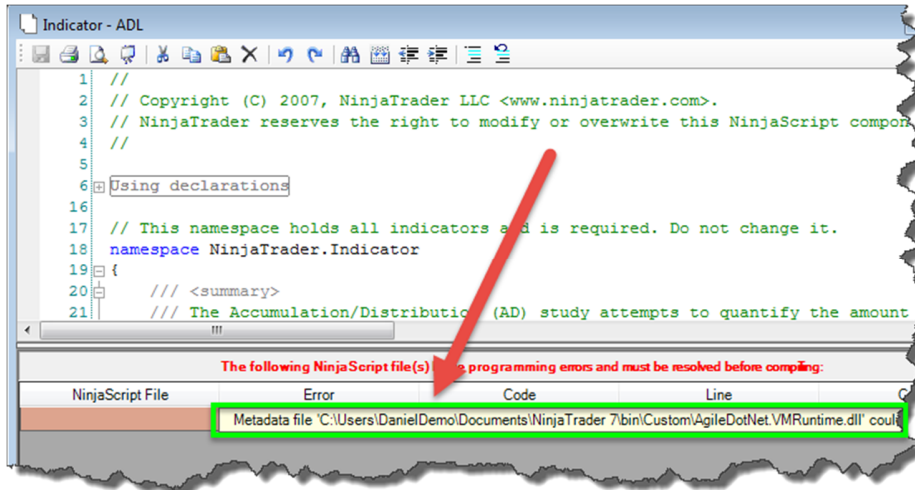
iii. Right-click anywhere in the document, and then left-click “Compile”



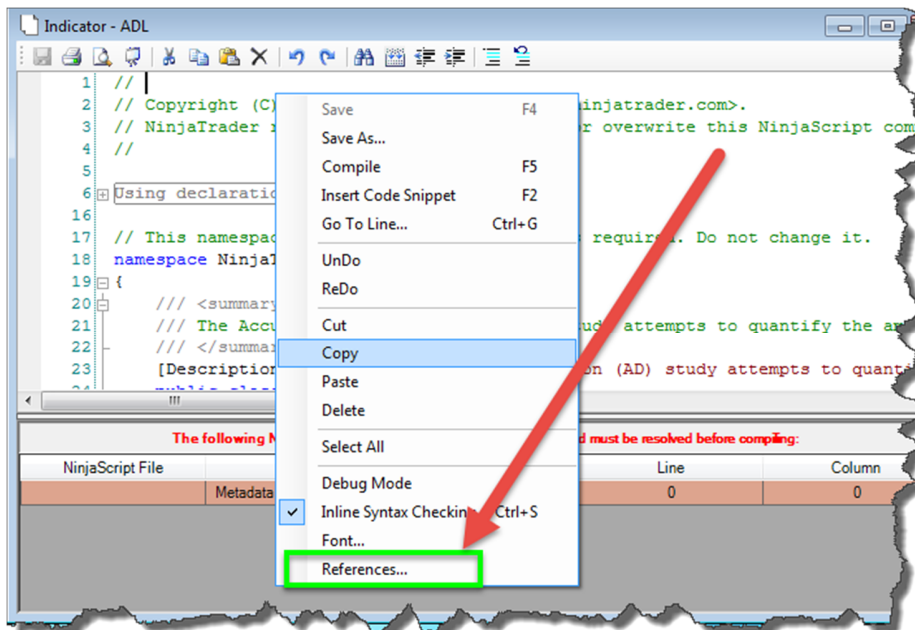
iv. A list of the errors will show up at the bottom of the document



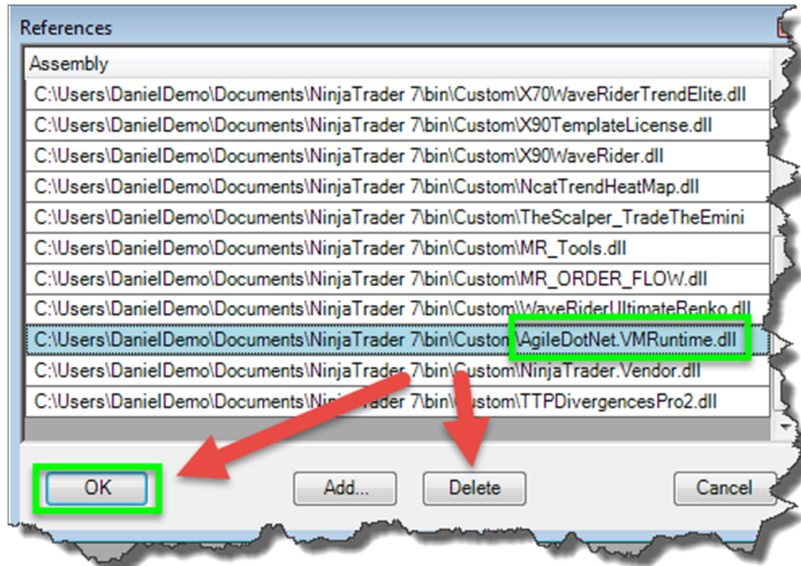
- v. Hover your cursor over the error to see what it is (the error below is a “Reference Error” as this DLL has just previously been removed).



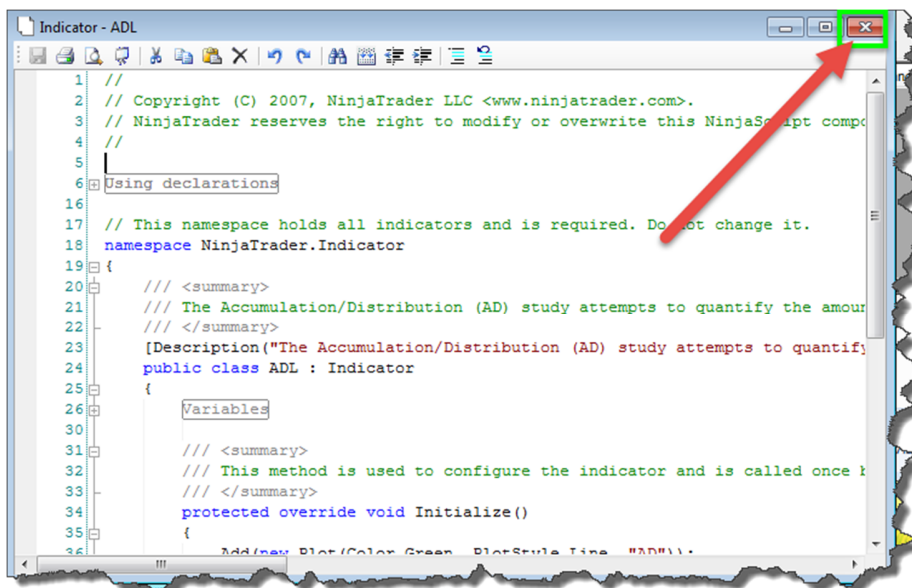
- vi. Right-click within the document, and then select “References...” to remove the associated reference to the DLL named “AgileDotNet.VMRuntime.dll”



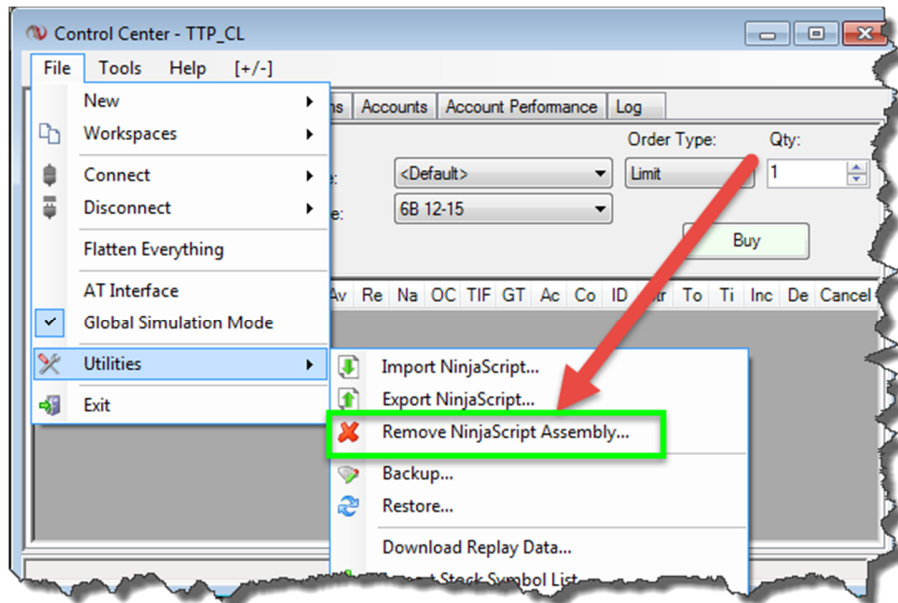
- vii. Left-click on the Reference for “...AgileDotNet.VMRuntime.dll” and then left-click “Delete” and then “OK” to remove the Reference.



- viii. Right-click in the document again and left-click “Compile”
1. The errors should now be gone
 - a. If you have more errors, please email support@ninjatrader.com for assistance. They will gladly (and quickly) fix any other errors you may have
- ix. Close the NinjaScript Editor by left-clicking on the X in the upper right-hand corner

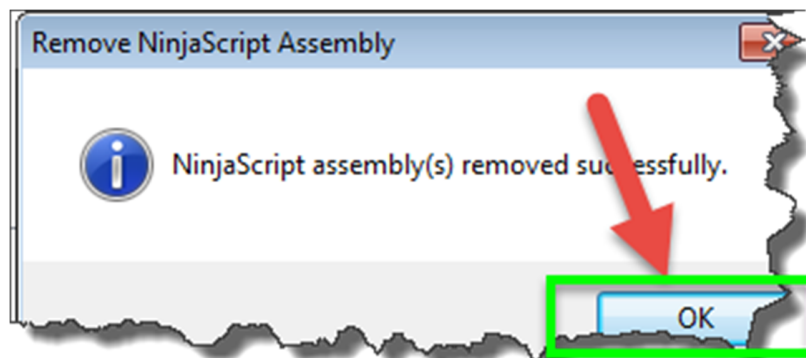


- c. From the NinjaTrader Control Center, left-click on File > Utilities > Remove NinjaScript Assembly...



- d. Find TTPDivergencesPRO2 (or any other TTP Assembly that might be left, i.e. "TTP_Toolbar", "TTP_RelativeIndicators", "TTP_DivergencesPRO", or "TTP_VolumeAndRangeIndicators", and REMOVE these one by one by left-clicking on the name, and then left-clicking the "Remove" button.

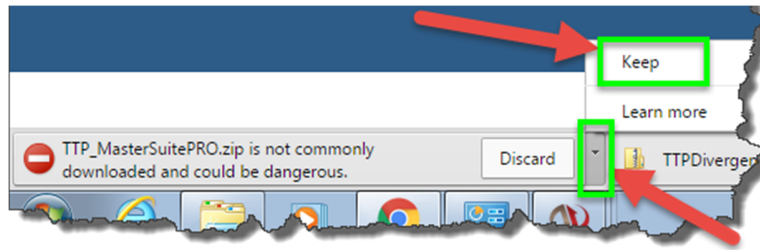
- i. The popup window below will appear. Simply left-click "OK" to remove assembly



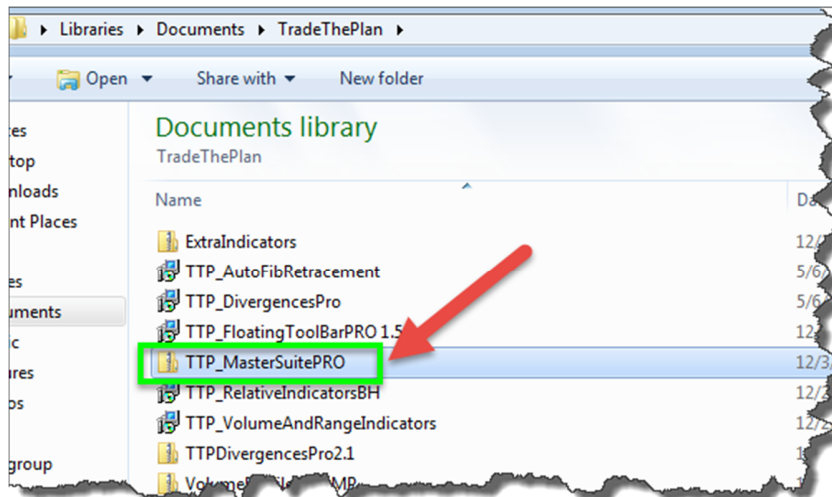
3. Close Ninja

4. Prepare a folder in your MyDocuments folder or on your Desktop named "TradeThePlan" and then download the new Installer, extra indicators, and volume profile from the website <http://trade-the-plan.com/master-suite-pro-update/>

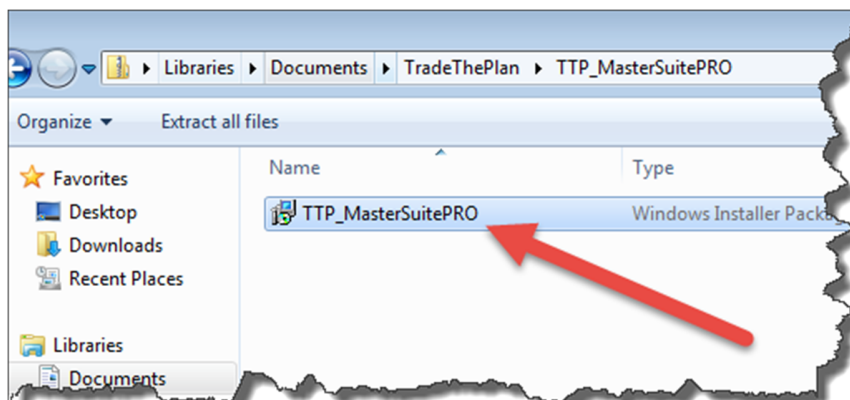
5. If you get a warning about “this file could be dangerous” with a “Discard” button, left-click on the very small down-arrow to the right of “Discard” and then left-click on “Keep”



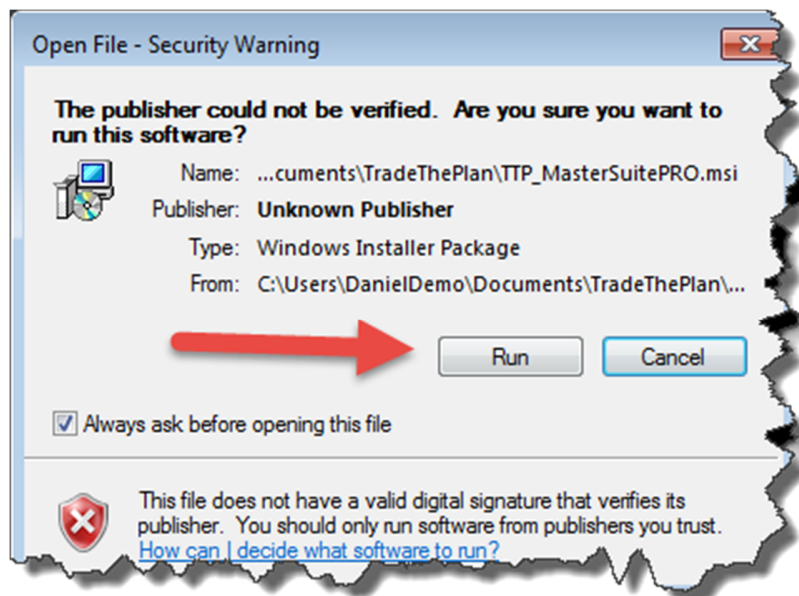
6. The new installer is inside of the zip file, so you’ll have to open the zip-file to access the .msi installer.



7. Double left-click on the installer named “TTP_MasterSuitePRO”

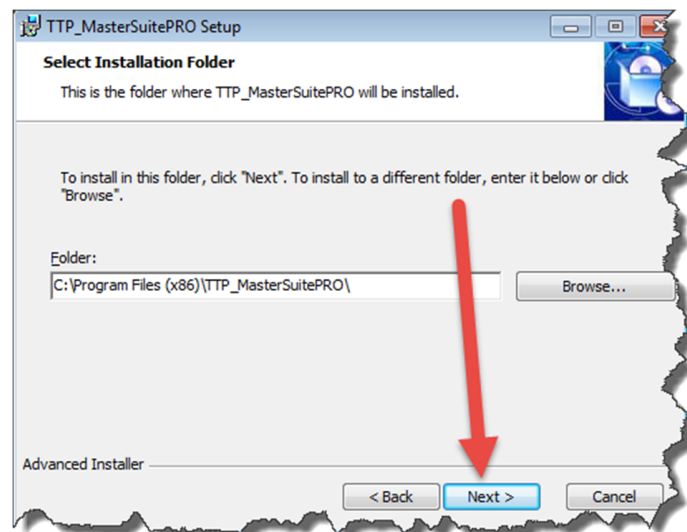
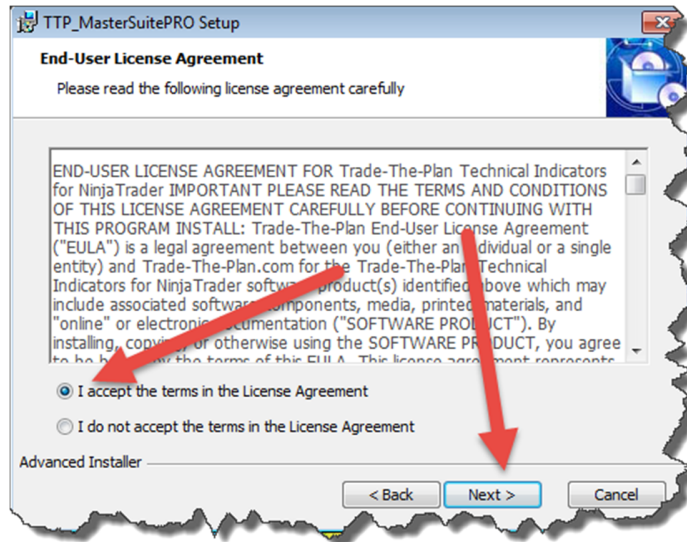


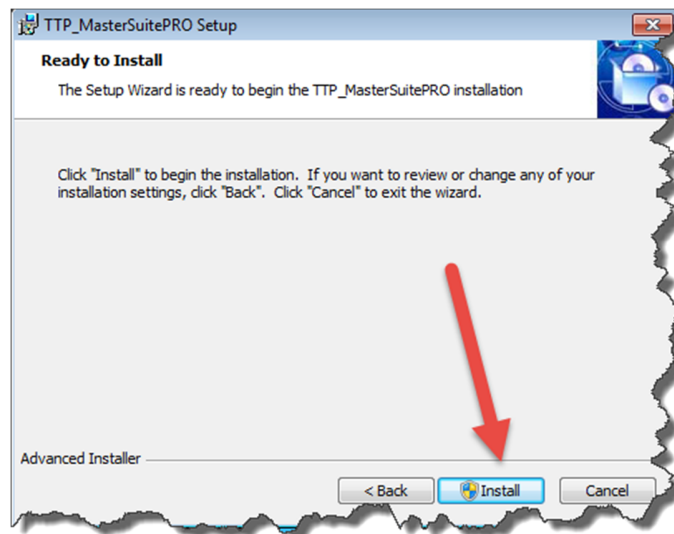
- a. Left-click "Run" to install



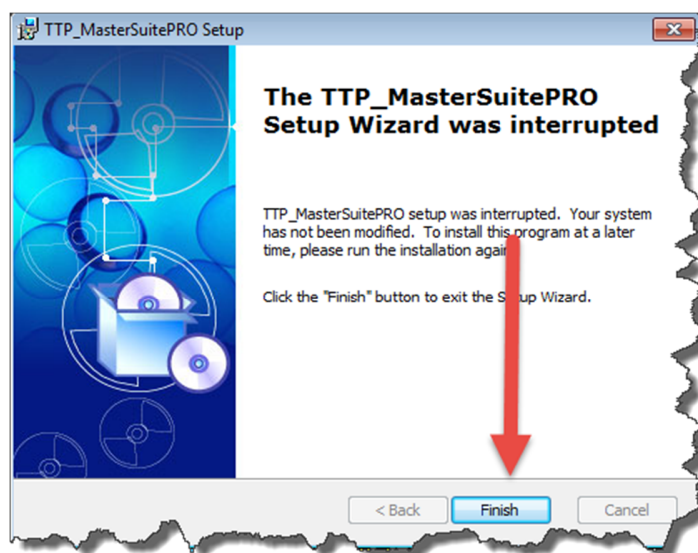
- b. Left-click "Next", then select "I accept the terms in the License Agreement" and left-click "Next", then left-click "Next" again, then left-click "Install", and then left-click "Yes" to install the software







c. Left-click “Finish” to complete installation

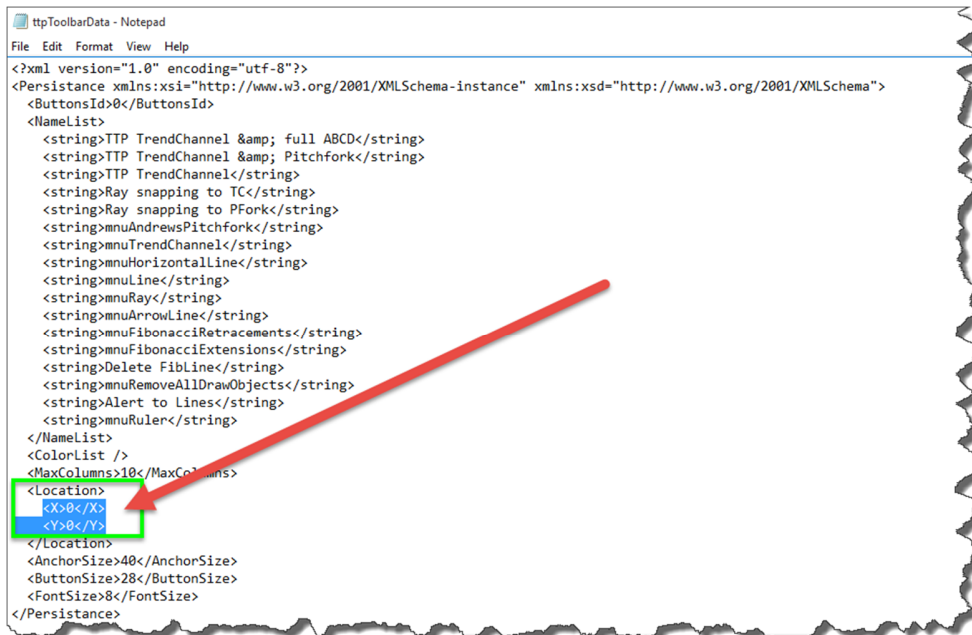
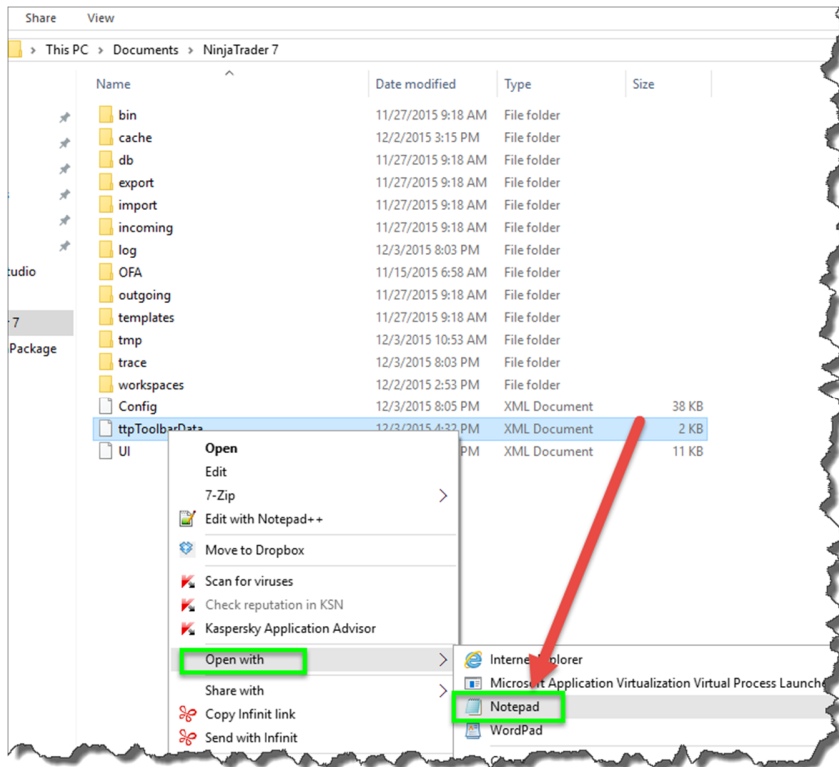


8. Now open NinjaTrader7

9. From the NinjaTrader Control Center, left-click File > Workspaces > Open Workspace, left click on the workspace named “_ToolBar” to open this workspace

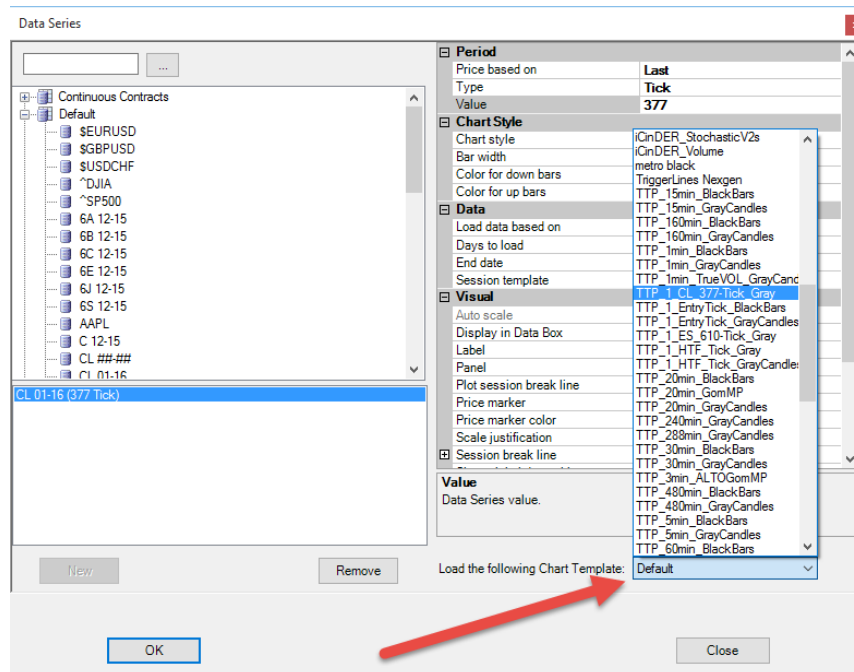
Note: You will need to always have this workspace open to be able to use the TTP_FloatingToolBarPRO. If for some reason you do not see the tool, simply make this the active workspace and “Reload NinjaScript” (F5) on this chart which has the FloatingToolBarPRO on it.

NOTE: If you can see that the toolbar is open by hovering over the NinjaTrader icon on your task bar, but you still do not see it visible on your screen, even after clicking on it or deleting it and refreshing the chart: 1) Close NinjaTrader7, 2) Open the NinjaTrader7 folder (MyDocuments > NinjaTrader7), 3) Right-click on the “ttpToolBarData” XML file and select “Open with > Notepad”, 4) Once it’s open, set the X and Y axis to “0”, as it appears in the screenshot below, 5) Then Save and Close, 6) Finally, reopen NinjaTrader7



10. Then open the workspaces named “TTP_CL” or “TTP_ES” and align the charts as you wish

NOTE: If you happened to accidentally delete a chart, follow the instructions below. To load a chart template, simply open a chart, select the period and type, load appropriate number of day, and select the template in the lower right-hand corner.



NOTE: If the chart has already been created, right-click on the chart, hover over “Templates” and left-click on “Load...” and find the appropriate chart template from the list.

Faster Tick Chart – Load 10 days – For ES 610 Tick chart, use Chart Template named “TTP_1_ES_610-Tick_Gray”. For CL 377 Tick chart, use Chart Template named “TTP_CL_377-Tick_Gray”.

Higher-Time-Frame (HTF) Tick Chart – Load 10 days – For any instrument, use Chart Template named “TTP_1_HTF_Tick_Gray”.

1 Minute Chart – Load 25 days – For any instrument, use “TTP_1min_GrayCandles”.

5 Minute Chart – Load 65 or 75 days (needs longer lookback because of copying TrendChannels from HTF’s – For any instrument, use “TTP_5min_GrayCandles”.

15 or 20 Minute Chart – Load 75 days – For any instrument, use “TTP_20min_GrayCandles”.

30 or 60 Minute Chart – Load 90 days – For any instrument, use “TTP_60min_GrayCandles”.

180 or 240 Minute Chart – Load 120 days – For any instrument, use “TTP_240min_GrayCandles”.

Daily Chart – Load 800 days – For any instrument, use “TTP_Daily_GrayCandles”.

Weekly Chart – Load 2500 days – For any instrument, use “TTP_Daily_GrayCandles”.