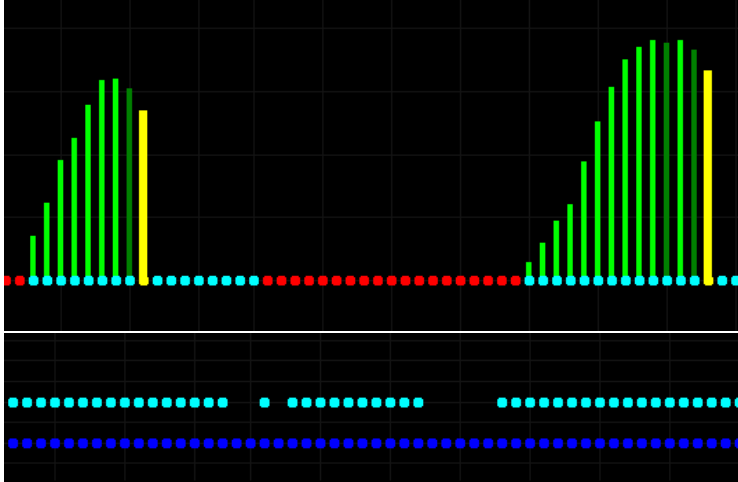
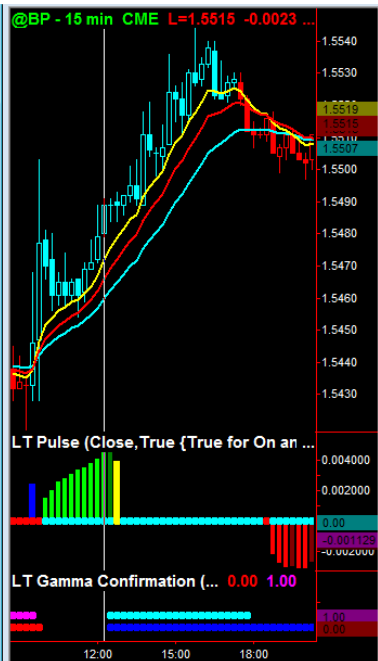
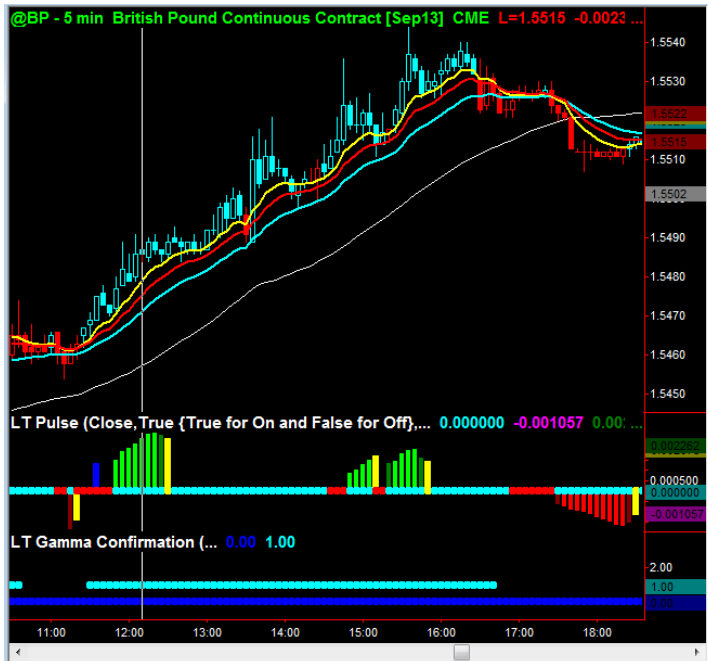


# *My Top Strategies with LT Pulse and LT Gamma Confirmation*



**LIVE Class** *with Alessio Rastani*

# I did this trade during the filming of documentary



# The Agenda For Today

1. Introduction To LT Pulse
2. My Favourite setups on how to trade with the pulse signals
3. Entry methods and execution – 3 types
4. The Highest probability methods
5. My favourite contrarian method to “sneak” into a trade.
6. Combining the pulse with “value” and “reversion” setups;
7. How to use the early signals to sneak in to a pulse signal;
8. LT Gamma Confirmation – filtering out the noise.
9. Money Management with Pulses and Gamma confirmation
10. Q&A.

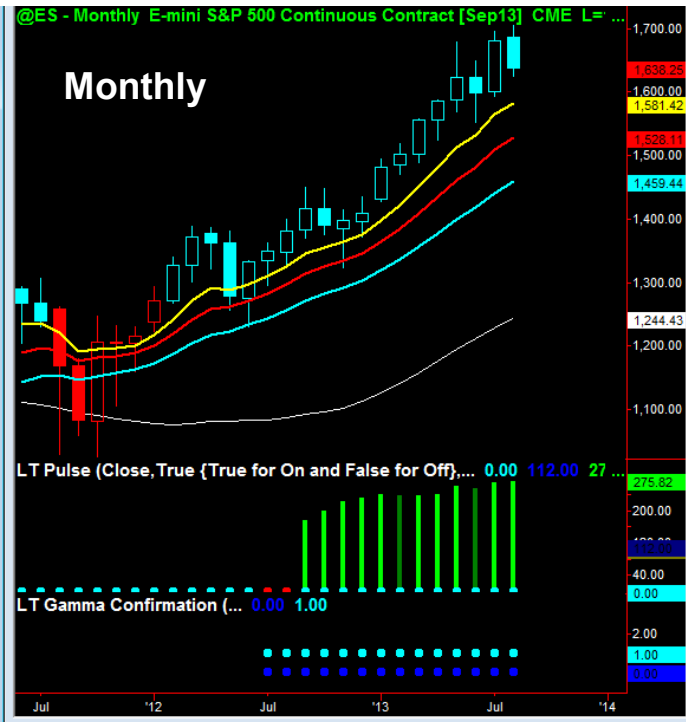
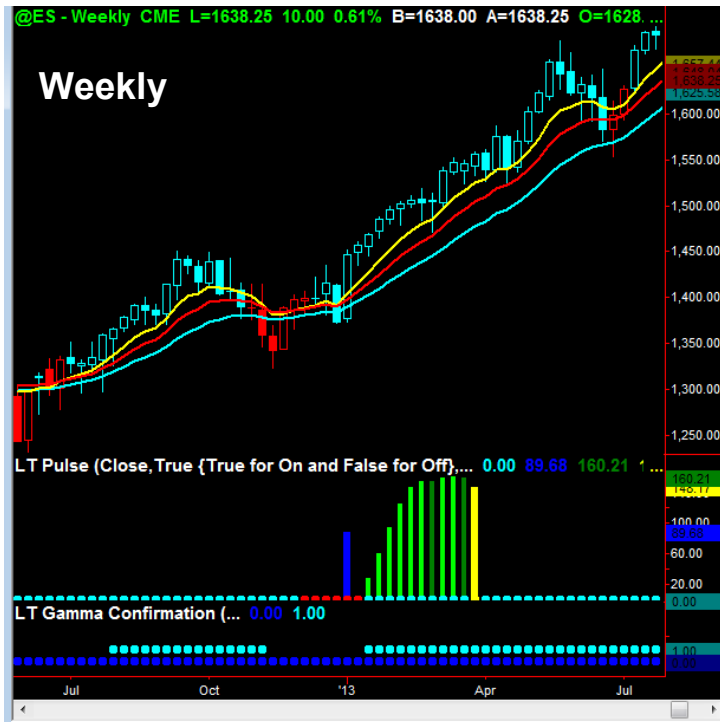
# What is the Pulse?

- As “momentum” or “trend” traders we are always on the look out for where the next “big move” is likely to occur.
- The LT Pulse helps us identify those “Big Moves” BEFORE they actually happen.
- We do this by looking at the TRANSITION of a market from LOW to HIGH volatility.
- For this reason, the LT Pulse is one of the most important indicators I use.

# Chart of the S&P 500 (e-mini futures)



# Chart of the S&P 500 (e-mini futures)



# The LT Pulse Indicator

1. The **red dots** on the LT Pulse indicate that the market is going to transition from LOW to HIGH volatility.
2. This is very important information. Why?
3. **High Volatility** = trending market environment and big move in the market. But **Low volatility** implies a sideways range-bound market (suitable for reversion to the mean).
4. So we need to position ourselves for when this **transition** occurs (being positioned is 70% of good trading).

# The LT Pulse Indicator

1. When the **red** dots go to **cyan** – **we take action!**
2. If momentum is **positive** (as shown by the green spikes) then we go **long**. If momentum is **negative** (as shown by the red spikes) then we go **short**.
3. We do not know in advance how long the pulse will last (however, the **average pulse lasts 8-10 bars**).
4. The **yellow** bar on LT Pulse indicates when pulse ends.



# The LT Pulse Indicator

This can be applied for **any time-frame**  
and **any market.**

**WWW.FOREX-WAREZ.COM**  
**ANDREYBBRY@GMAIL.COM SKYPE: ANDREYBBRY**

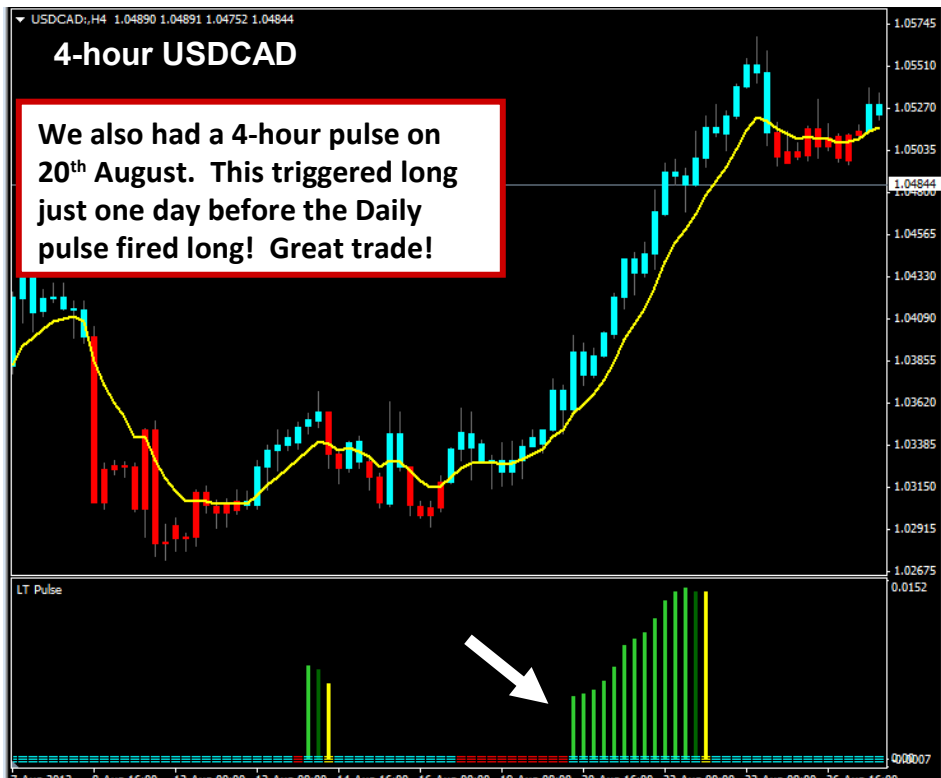
# USDCAD – Daily and Weekly Charts

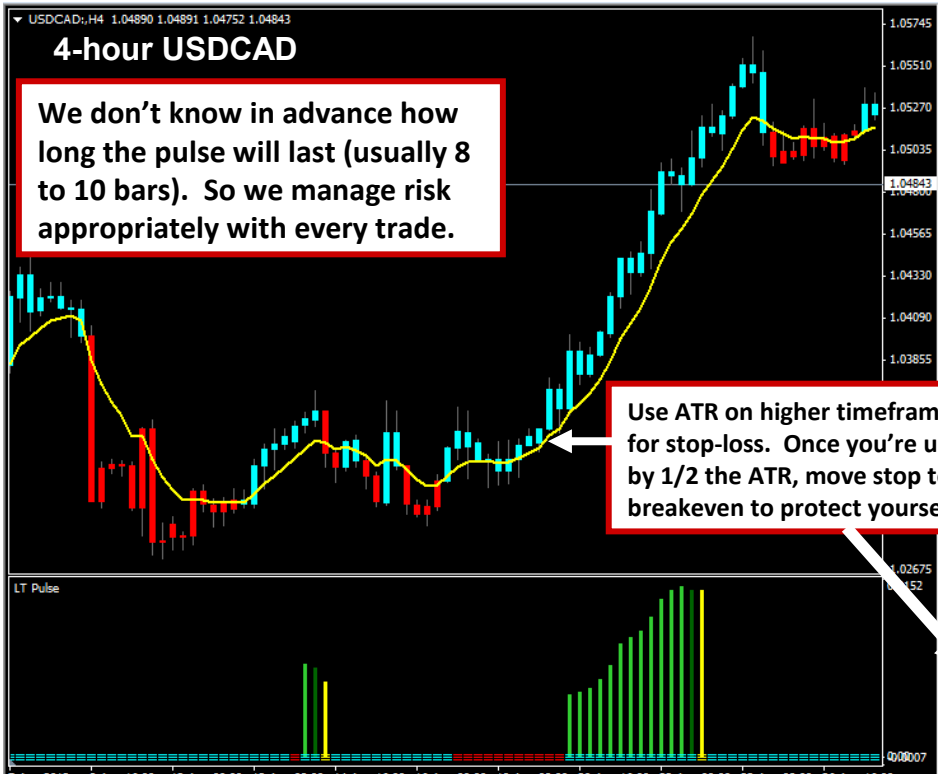
Trade we did recently:  
Pulse fires long on weekly charts  
in July. In August we bought  
pullback to support.

USDCHF:	0.92178	0.92202
USDCZK:	19.2324	19.2676
USDDKK:	5.58928	5.59228
USDHKD:	7.75526	7.75607
USDHUF:	225.114	225.844
USDMXN:	13.32810	13.33425
USDNOK:	6.04593	6.04934
USDPLN:	3.20986	3.21440
USDSFK:	6.50309	6.50675

- Navigator
- Alligator
  - ATR
  - Awesome
  - Bands
  - Bears
  - Bulls
  - CCI
  - Heiken Ashi
  - Ichimoku
  - iExposure
  - Keltner\_Channels
  - LT DecisionHelper
  - LT GammaConfirmation
  - LT Pulse







**4-hour USD/CAD**

We don't know in advance how long the pulse will last (usually 8 to 10 bars). So we manage risk appropriately with every trade.

Use ATR on higher timeframe for stop-loss. Once you're up by 1/2 the ATR, move stop to breakeven to protect yourself.



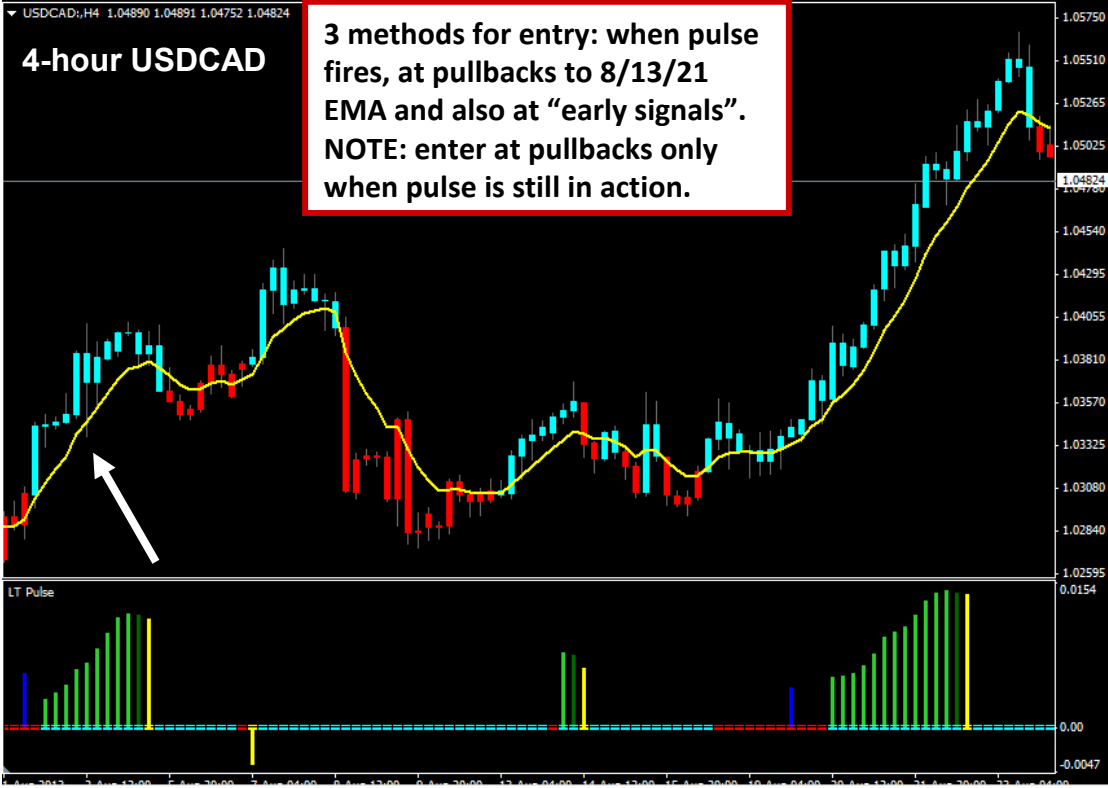
**Daily**

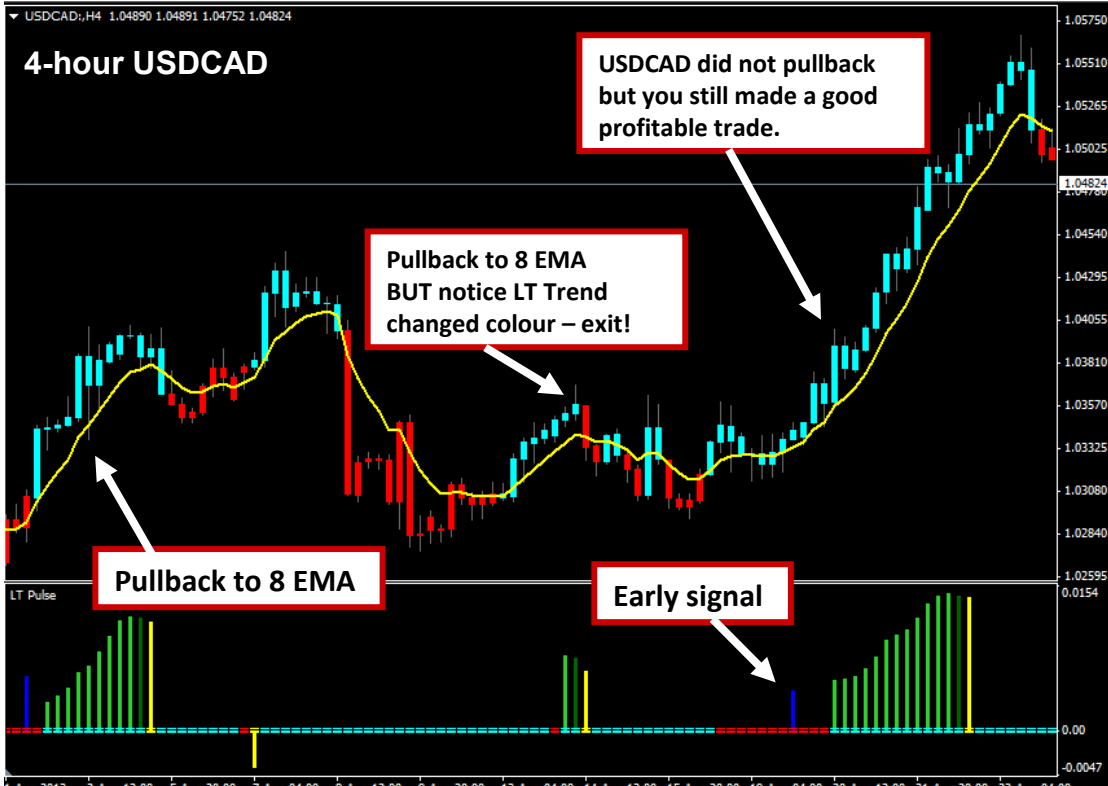
Average True Range (14)  
Time: 2013.08.20 00:00  
Value: 0.0063

USD CAD, H4 1.04890 1.04891 1.04752 1.04824

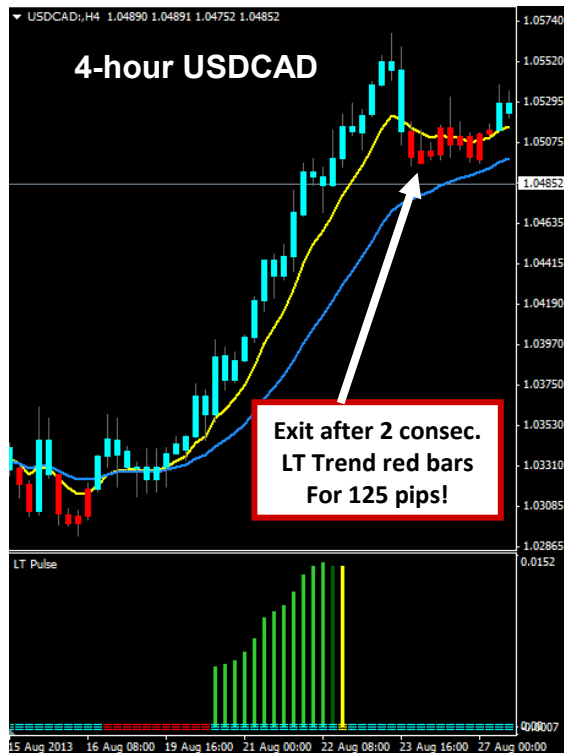
# 4-hour USDCAD

**3 methods for entry: when pulse fires, at pullbacks to 8/13/21 EMA and also at "early signals".**  
**NOTE: enter at pullbacks only when pulse is still in action.**

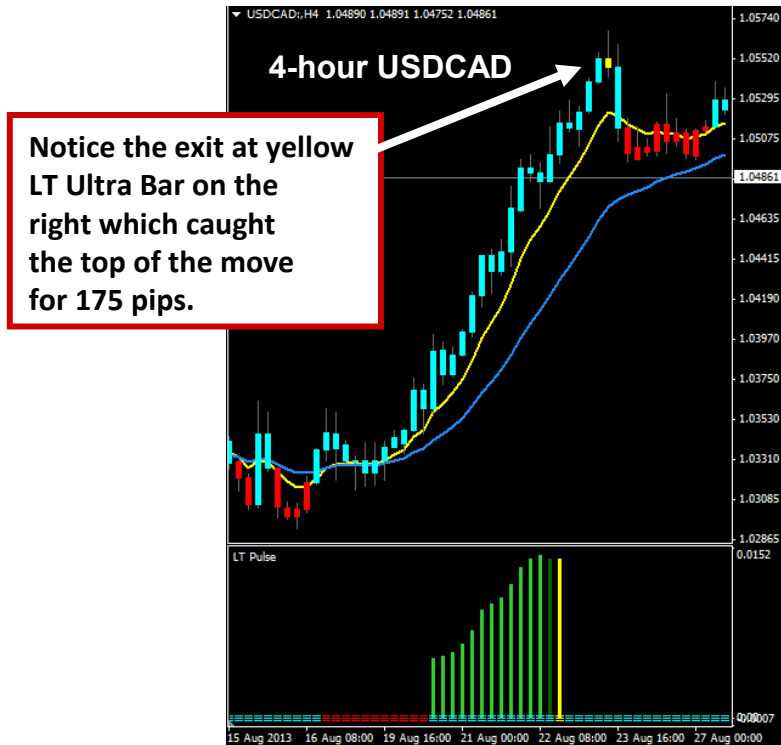




## With LT Trend



## With LT Ultra



USDCAD:H4 1.04890 1.04891 1.04752 1.04851

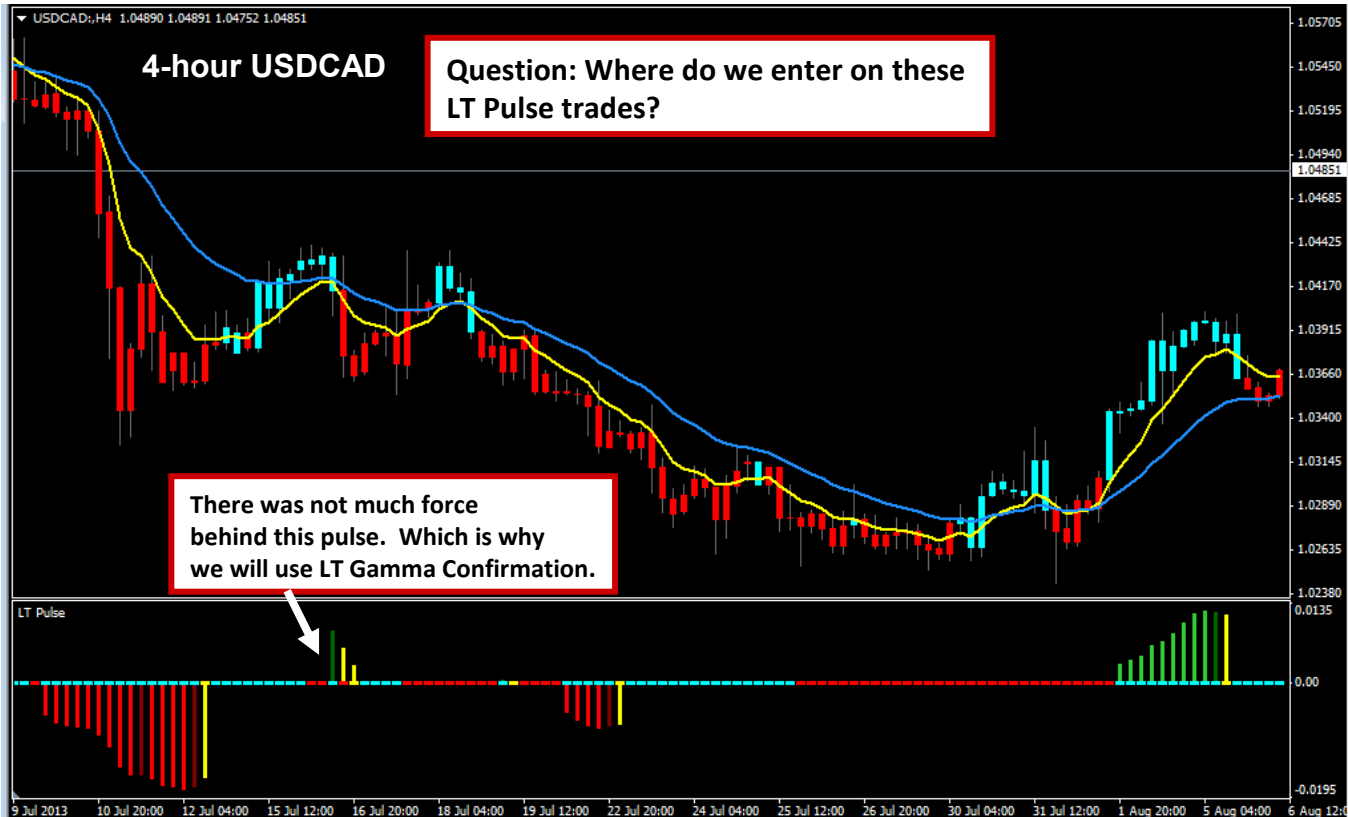
## 4-hour USDCAD

Question: Where do we enter on these LT Pulse trades?

There was not much force behind this pulse. Which is why we will use LT Gamma Confirmation.

LT Pulse

9 Jul 2013 10 Jul 20:00 12 Jul 04:00 15 Jul 12:00 16 Jul 20:00 18 Jul 04:00 19 Jul 12:00 22 Jul 20:00 24 Jul 04:00 25 Jul 12:00 26 Jul 20:00 30 Jul 04:00 31 Jul 12:00 1 Aug 20:00 5 Aug 04:00 6 Aug 12:00





USDCAD:H4 1.04890 1.04891 1.04752 1.04851

## 4-hour USDCAD

Another short signal:  
Remember a trend can continue  
even after the pulse has finished.  
We enter at pulse fire and pullbacks.

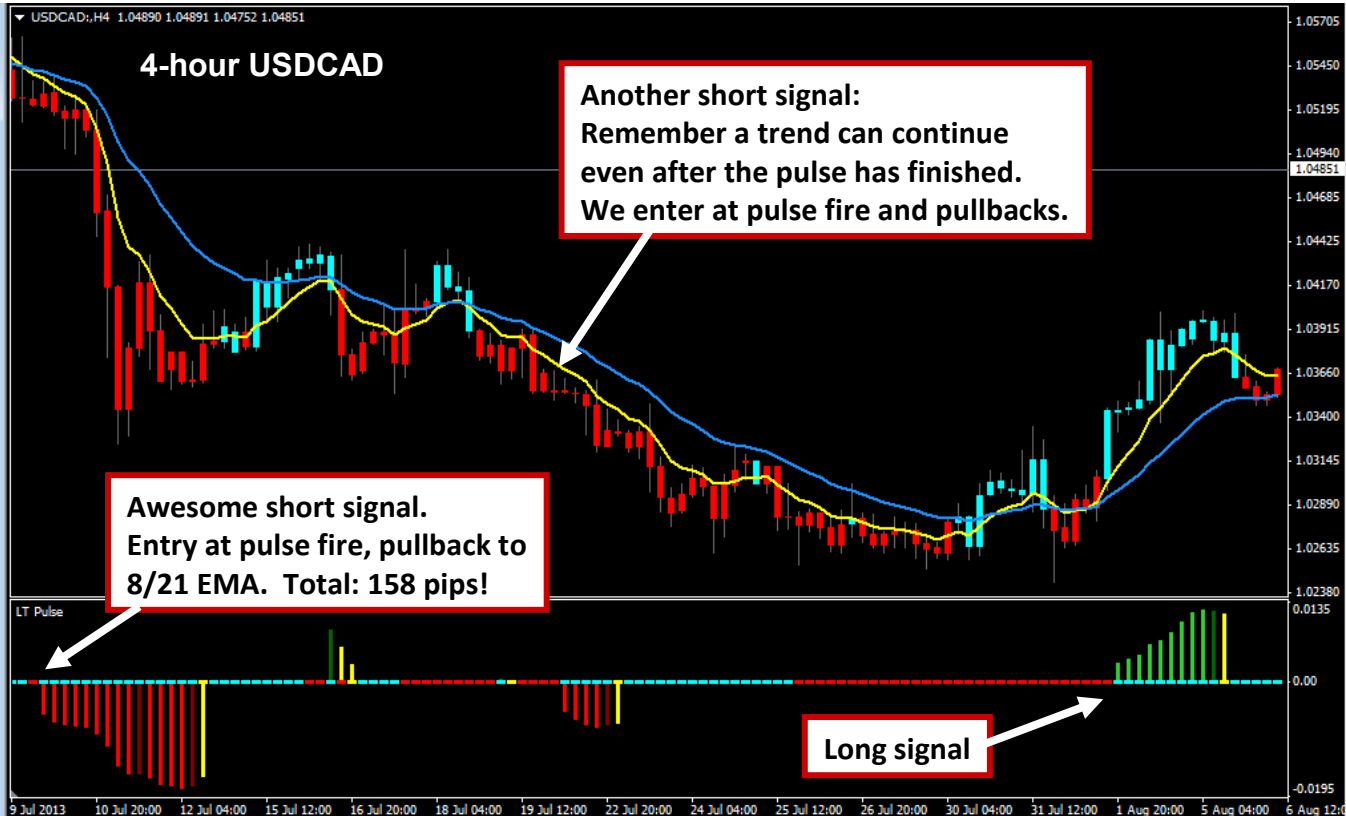
Awesome short signal.  
Entry at pulse fire, pullback to  
8/21 EMA. Total: 158 pips!

LT Pulse

Long signal

9 Jul 2013 10 Jul 20:00 12 Jul 04:00 15 Jul 12:00 16 Jul 20:00 18 Jul 04:00 19 Jul 12:00 22 Jul 20:00 24 Jul 04:00 25 Jul 12:00 26 Jul 20:00 30 Jul 04:00 31 Jul 12:00 1 Aug 20:00 5 Aug 04:00 6 Aug 12:00

1.05705  
1.05450  
1.05195  
1.04940  
1.04851  
1.04685  
1.04425  
1.04170  
1.03915  
1.03660  
1.03400  
1.03145  
1.02890  
1.02635  
1.02380  
0.0135  
0.00  
-0.0195





Notice the yellow LT Ultra Bar on the right which caught the bottom of the move!



# LT Pulse – Just to be clear

1. Think of LT Pulse as a **CATALYST** or a “**Trigger**” to get you into a trade.
2. Remember: that a pulse can make the market move for much longer than the pulse itself lasts.
3. For example: even if after a **BUY** Pulse ends, the market may continue to move much **higher**. So we just trail our stop higher or wait for an exit signal.

# LT Pulse – Entry methods

**We can enter on any of these:**

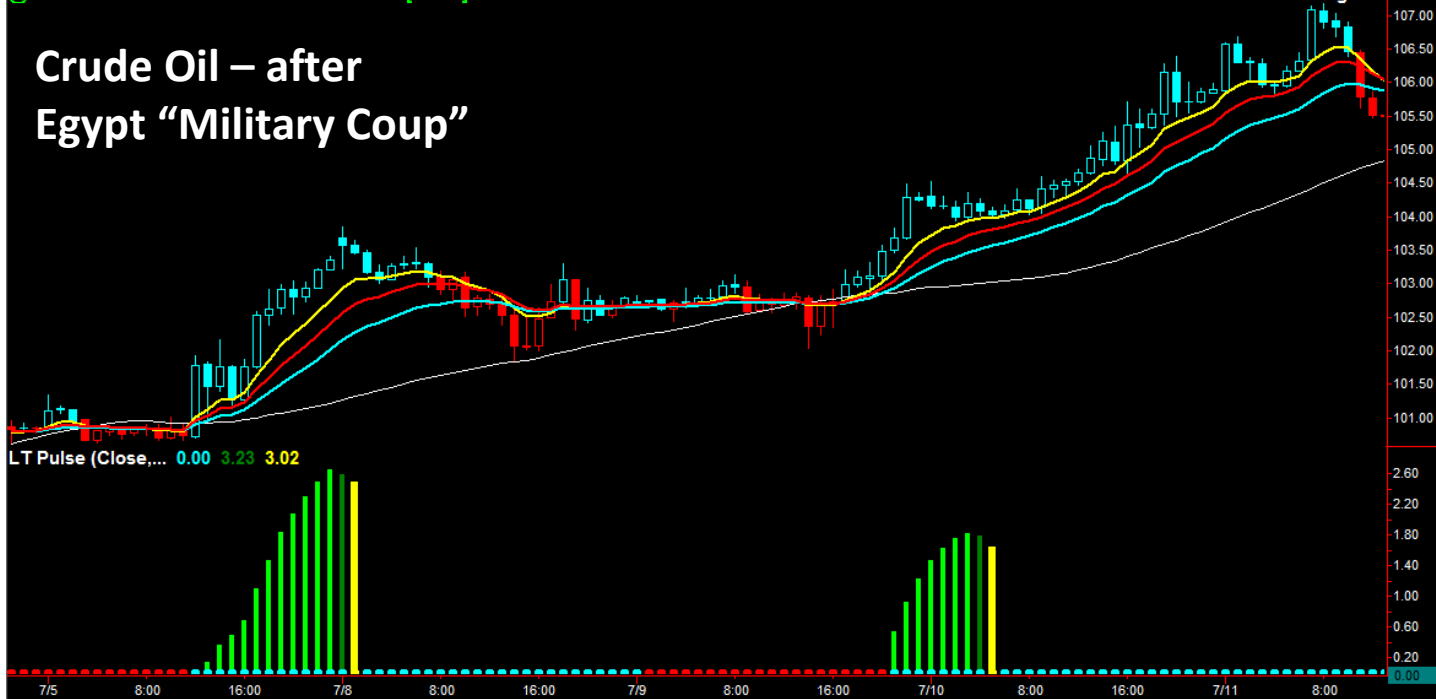
- When pulse initially fires;
- A pullback to 8, 13 or 21 EMA after the pulse fires (scale in);
- Early signals to sneak in (discussed later in webinar).

**Remember to **scale in** by using appropriate amounts on each one.**

e.g. instead of entering “all in” with 3 contracts when pulse fires, instead:  
we buy **one contract** when pulse fires, then **another** when it pulls back to 8  
EMA, and another when it comes to 21 EMA – for a total of 3 contracts.

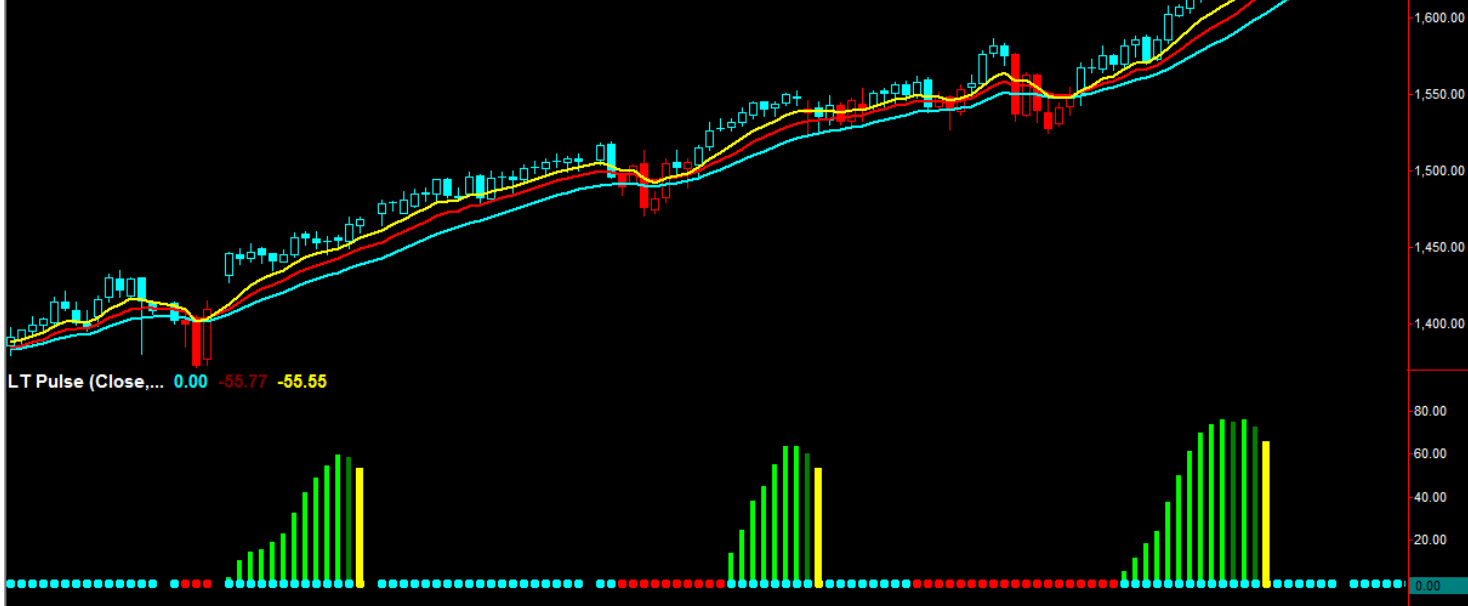
@CL - 60 min Crude Oil Continuous Contract [Oct13] NYMEX L=109.61 -0.49 -0.45% B=109.59 A=109.62 O=109.53 Hi=109.72 Lo=109.44 V=554 Mov Avg E ...

# Crude Oil – after Egypt “Military Coup”



@ES - Daily CME L=1630.00 1.75 0.11% B=1630.00 A=1630.25 O=1628.25 Hi=1639.25 Lo=1624.75 V=1,644,138 Mov Avg Exponential (Close,8,0) 1646.21 Mov / ...

# S&P 500



LT Pulse (Close,... 0.00 -55.77 -55.55

'13

Feb

Mar

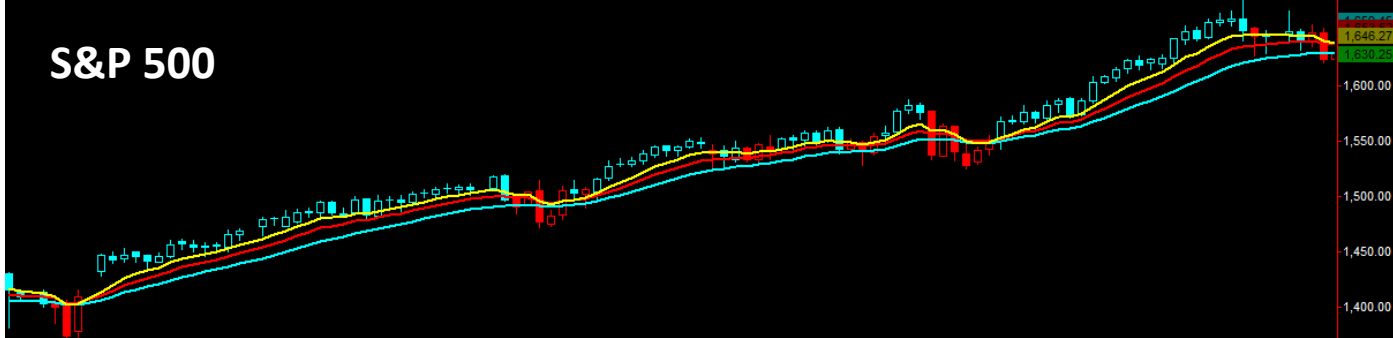
Apr

May

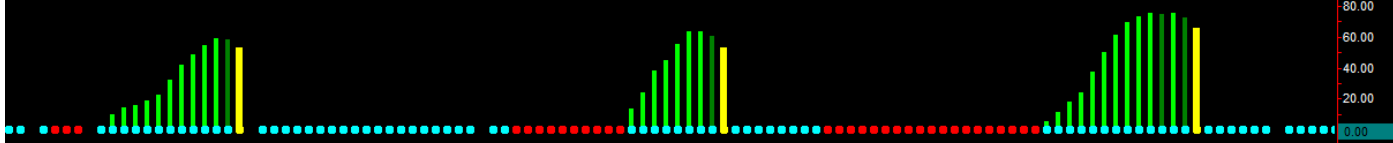


@ES - Daily CME L=1630.25 2.00 0.12% B=1630.25 A=1630.50 O=1628.25 Hi=1639.25 Lo=1624.75 V=1,646,309 Mov Avg Exponential (Close,8,0) 1646.27 Mov / ...

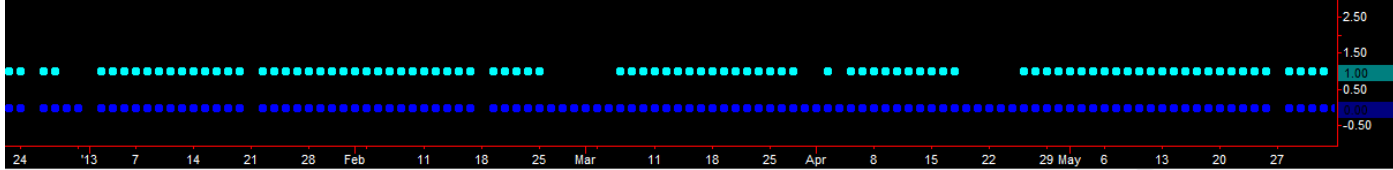
# S&P 500



LT Pulse (Close,... 0.00 -55.77 -55.55)



LT Gamma Confirmation (... 0.00 1.00)



# My Favourite High Probability Strategy

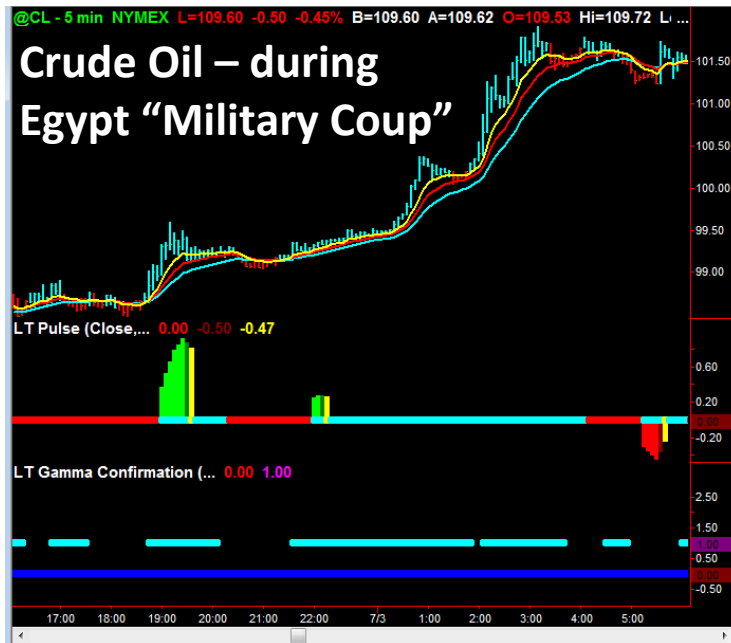
1. Wait for the **HIGHER** timeframe Pulse to **FIRE** first.
2. Then “Sneak in” to a trade on the **lower** timeframe.
3. You can enter at pullbacks, or even better take pulses on the lower timeframe.
4. E.g. **if pulse fires long** on the 60 min chart, sneak in by going on a 5 min chart and buy pullbacks or take pulse signals.  
**If pulse fires short** on Daily or weekly charts, short pullbacks or take pulse signals on 60 min or 240min chart.



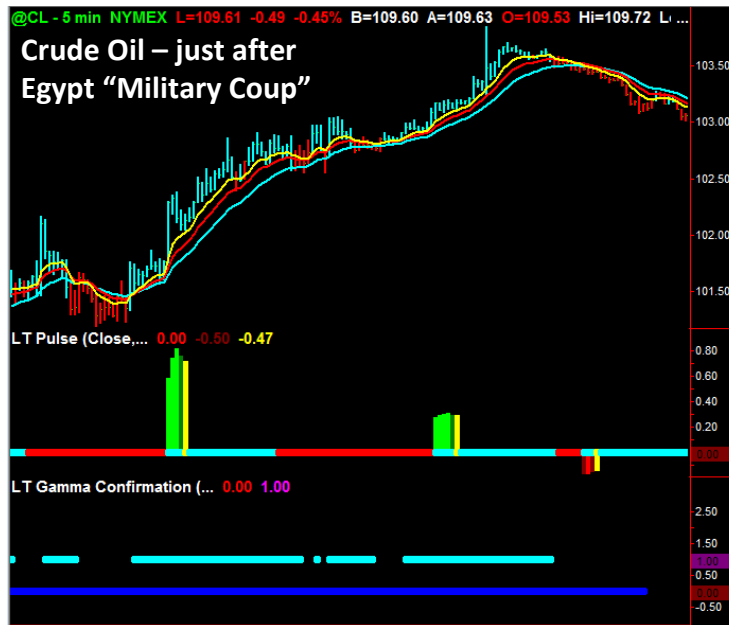
**Think of this like a surfer “jumping” on a big wave!**



# My Favourite High Probability Strategy



# My Favourite High Probability Strategy



# My Favourite High Probability Strategy

LOWER	HIGHER
1 min	15 min
2 min / 5 min	60 min
15 min / 30 min	Daily
60 min	Daily / <b>Weekly</b>
240 min	Weekly / Monthly
Daily	Weekly / Monthly

# My Favourite High Probability Strategy



# My Favourite High Probability Strategy



# My Favourite Contrarian Strategy to “sneak in” to a trade

1. Wait for **higher** time-frame pulse to fire in a specific direction (e.g. long pulse).
2. Then we go on **lower** timeframe and wait for a pulse in the **OPPOSITE** Direction to end (e.g. a short pulse to finish).
3. We then enter in same direction as the higher timeframe pulse (i.e. we go long).

(wait for price to close above 8 ema first).

# My Favourite Contrarian Strategy to “sneak in” to a trade

## EXAMPLE:

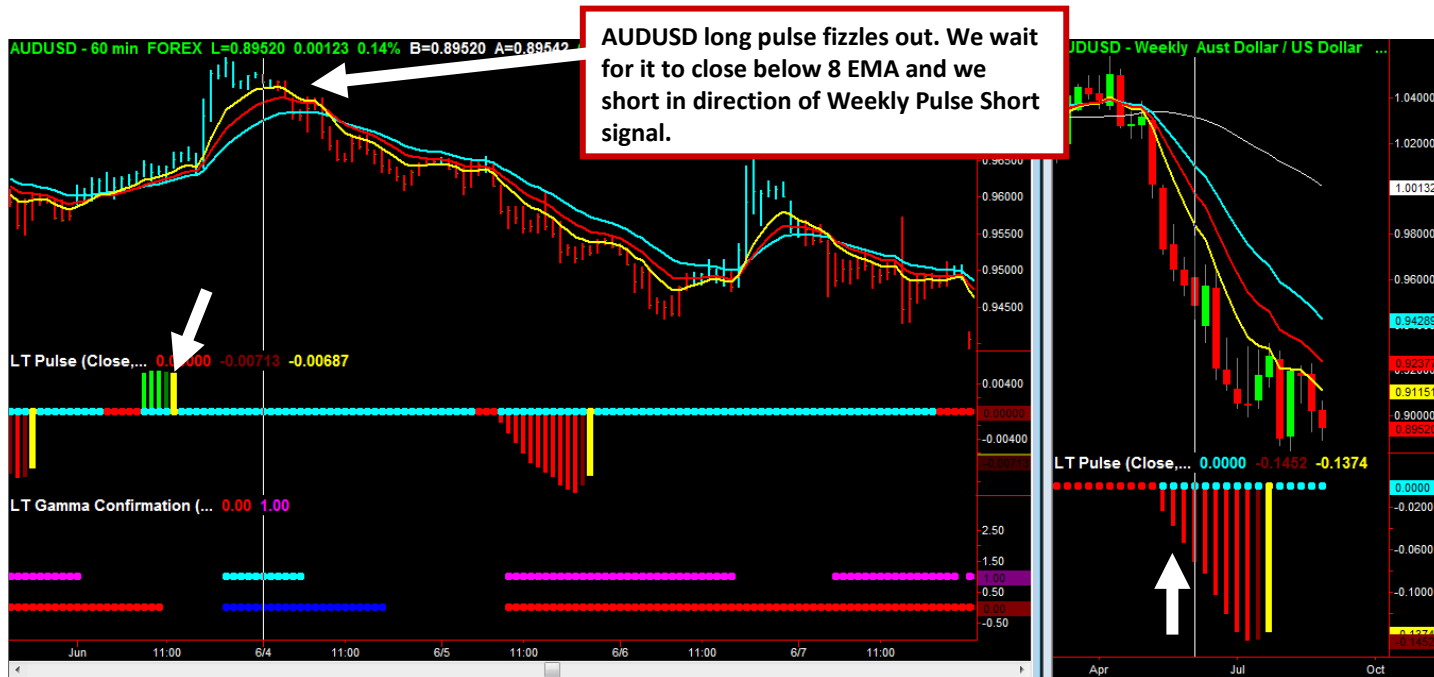
- We wait for Weekly chart of S&P 500 to fire a **SHORT** pulse first;
- We go on 60 min chart and as soon as any **LONG** pulse ends, we short the market (**in same direction as the weekly pulse**).
- Tip: Wait for price to close below the **8 EMA** first (for higher odds).



**Think of this like a dolphin appearing  
from under a wave!**



# My Favourite Contrarian Strategy to “sneak in” to a trade



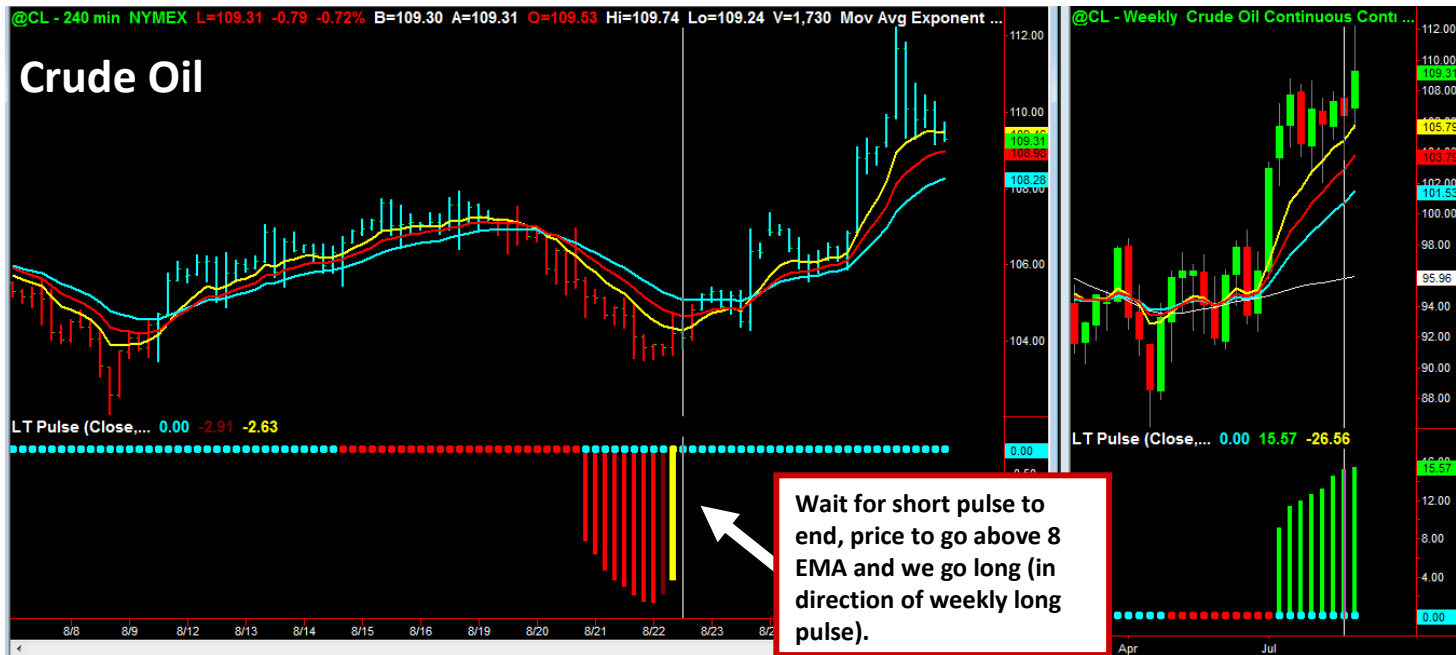
**Tip:** If higher timeframe is forming a pulse, lower timeframe usually gets choppy.



# Solution? You can apply reversion setups in a choppy market.



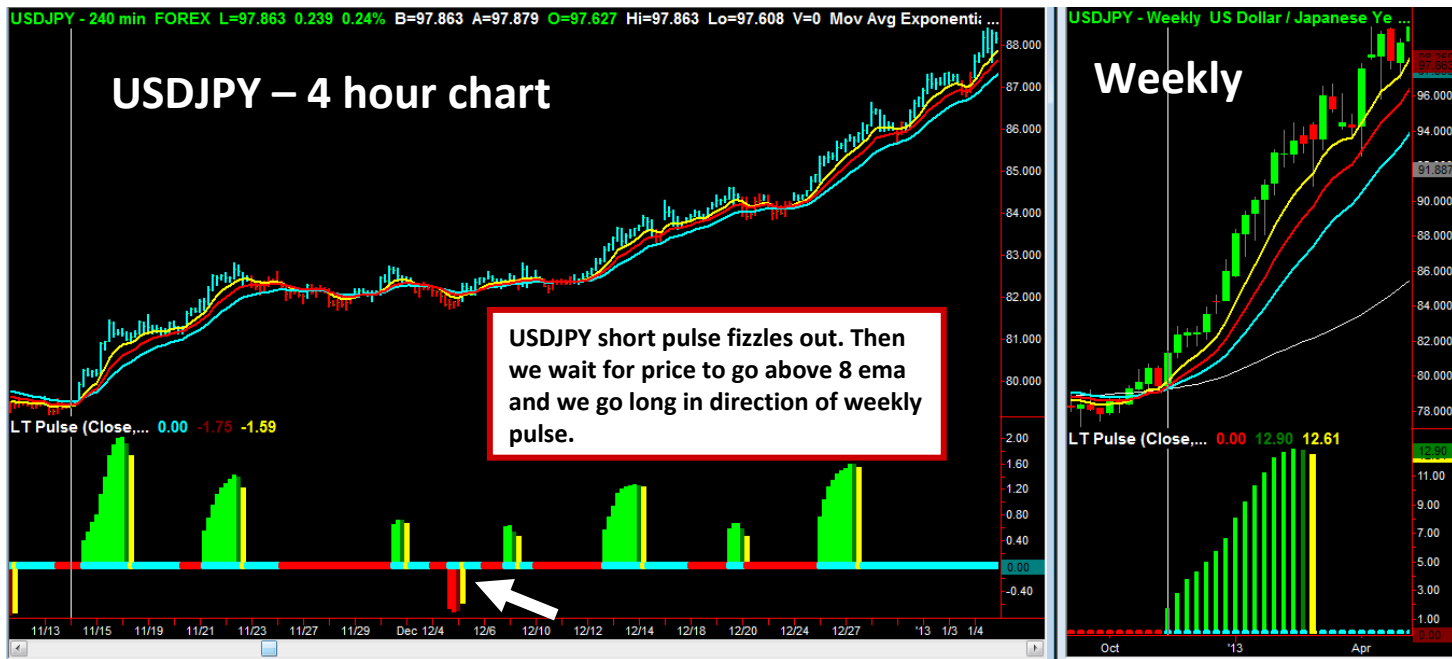
# My Favourite Contrarian Strategy to “sneak in” to a trade



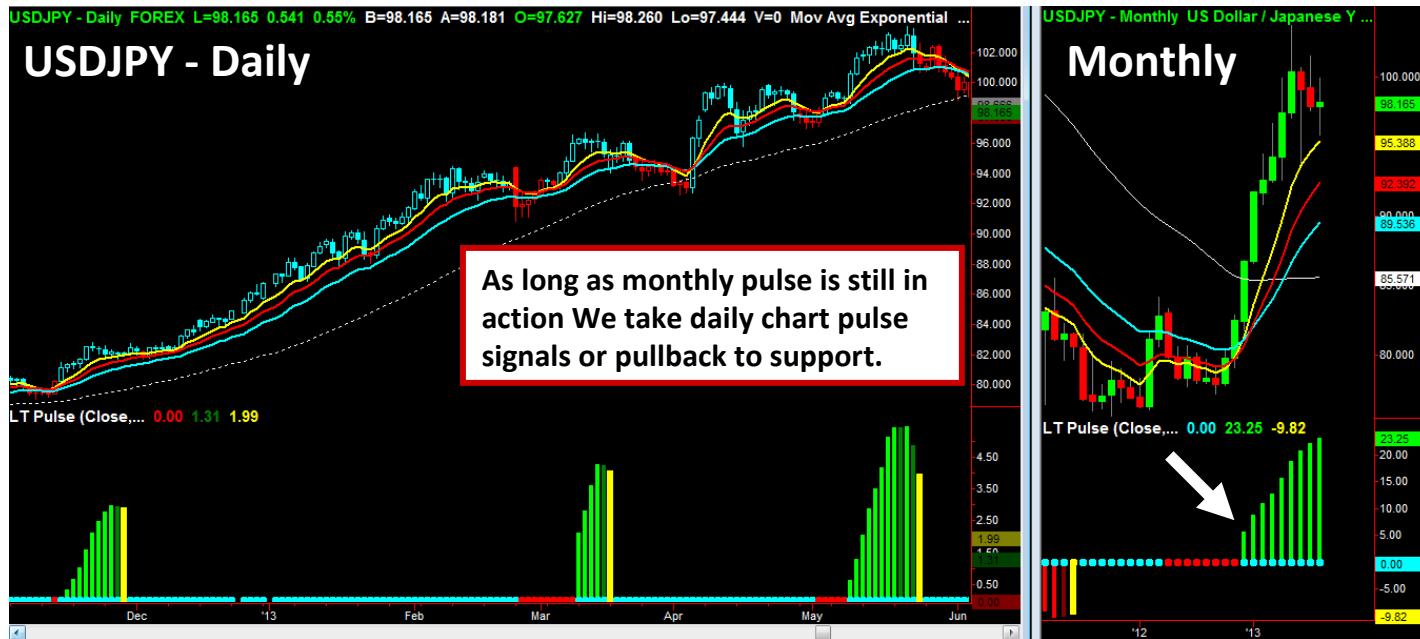
# My Favourite Contrarian Strategy to “sneak in” to a trade



# My Favourite Contrarian Strategy to “sneak in” to a trade



# Monthly Pulses can be very powerful too. Combine them with Daily charts.





# The Key To Successful Trading

- Knowing when to trade and knowing when NOT to trade!
- The best traders are **NOT trading all the time** but **waiting for the right opportunity** when the odds are massively in your favour.
- We can be selective and trade only the **superior setups** (“**Bentley Setups**”).

**Beatle**



**Bentley**



# The Key To Successful Trading

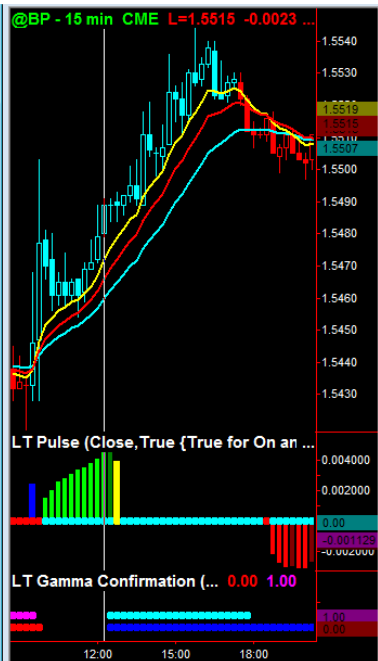
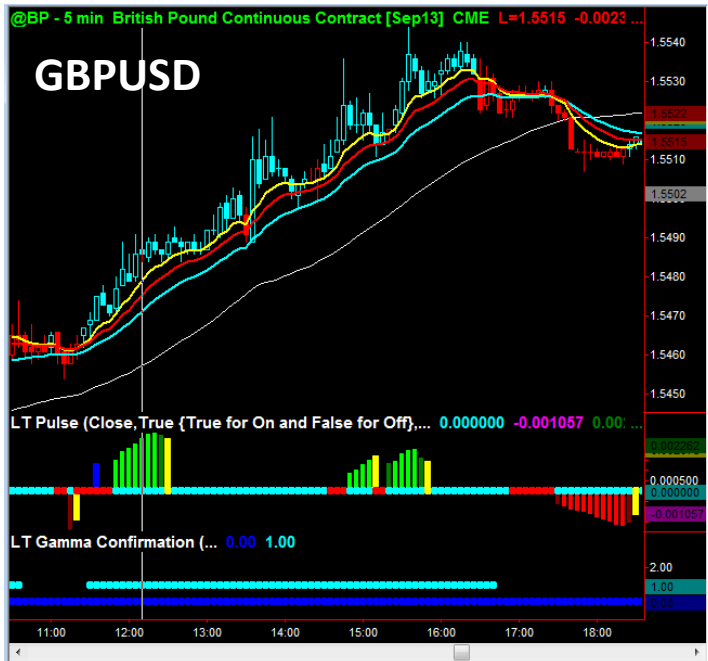
**Example:** Which would you prefer?

Risk money on 10 **inferior** mediocre setups (“beatle setups”) where there is **NO alignment, NO confirmation, NO high probability edge...**

OR

wait for 1 **Superior** setup (**Bentley trade**) where you have **alignment, confirmation, high probability** and you can place more money on that trade (e.g. 3-5%) – and **make more money** on that than the entire 10 inferior trades.

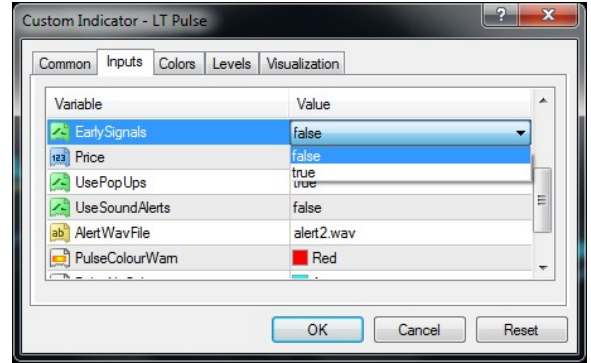
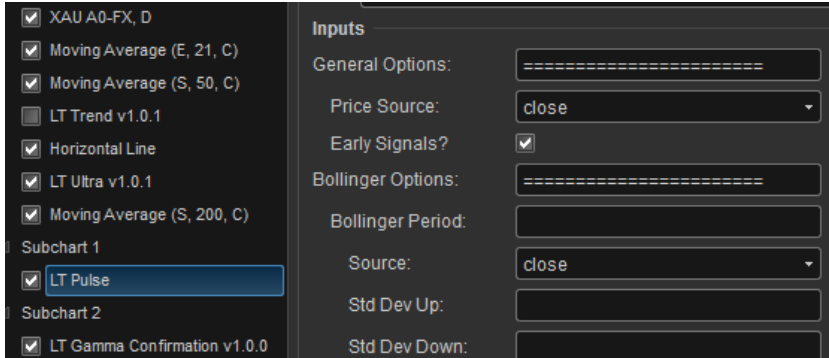
# I did this trade during the filming of documentary



# Early Signals

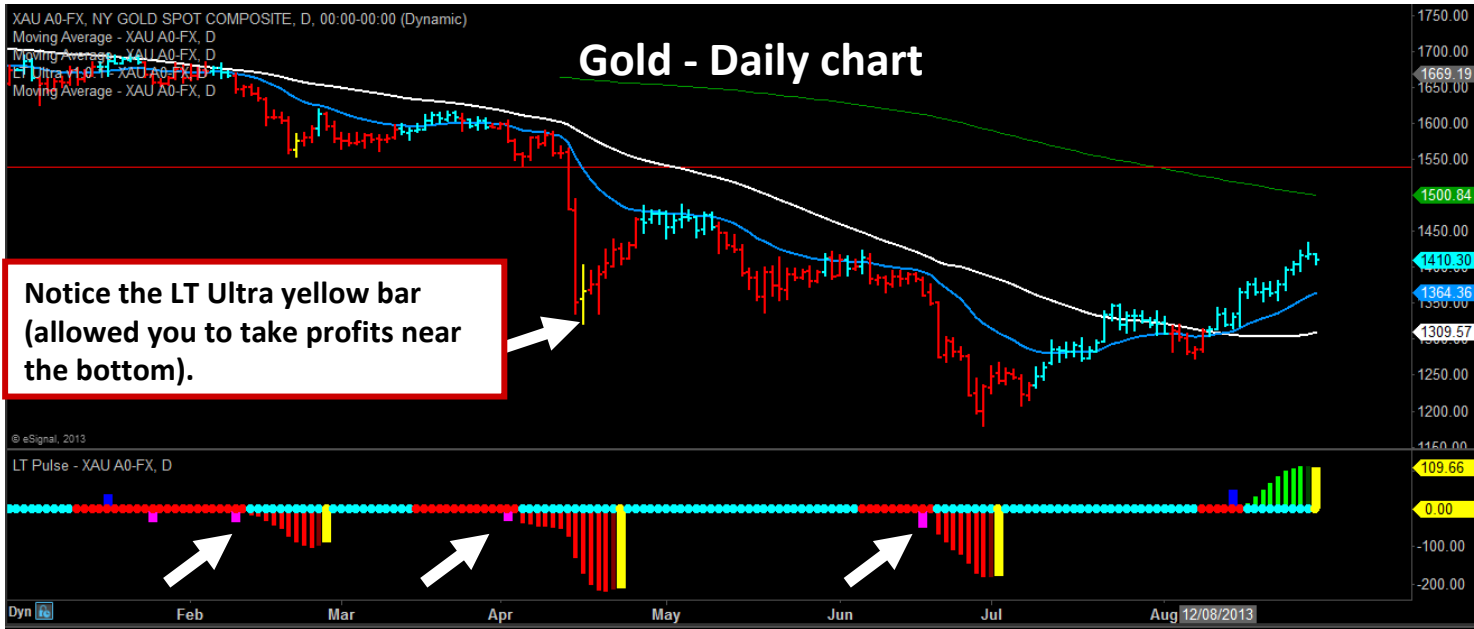
- Allow you to “sneak” into a pulse signal BEFORE it fires off.
- Blue = Long signal and Magenta = Short
- Before you take an early signal **you MUST first decide on the direction** you think the pulse (or market) is going to go. (**Tip:** Take it in the path of least resistance and LT Gamma Confirmation can help you in this).
- When you enter with an early signal you “scale in” with only a small amount (25% or 1/3 of your position). E.g. 1 contract out of a total of 4 contracts.

# Early Signals

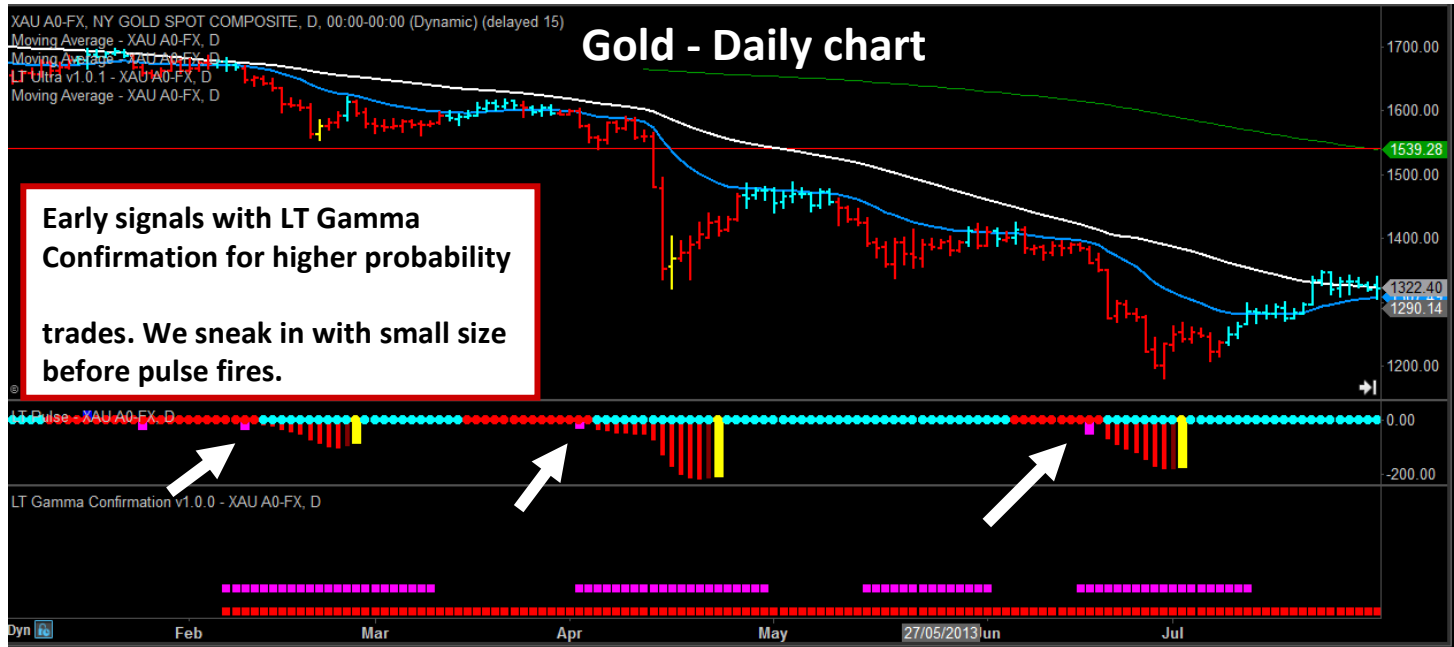


- Early signals are optional. You can just take the normal pulse signals if you like.
- Tip: Get used to the normal Pulse signals first before you start using the early signals (which are more advanced).

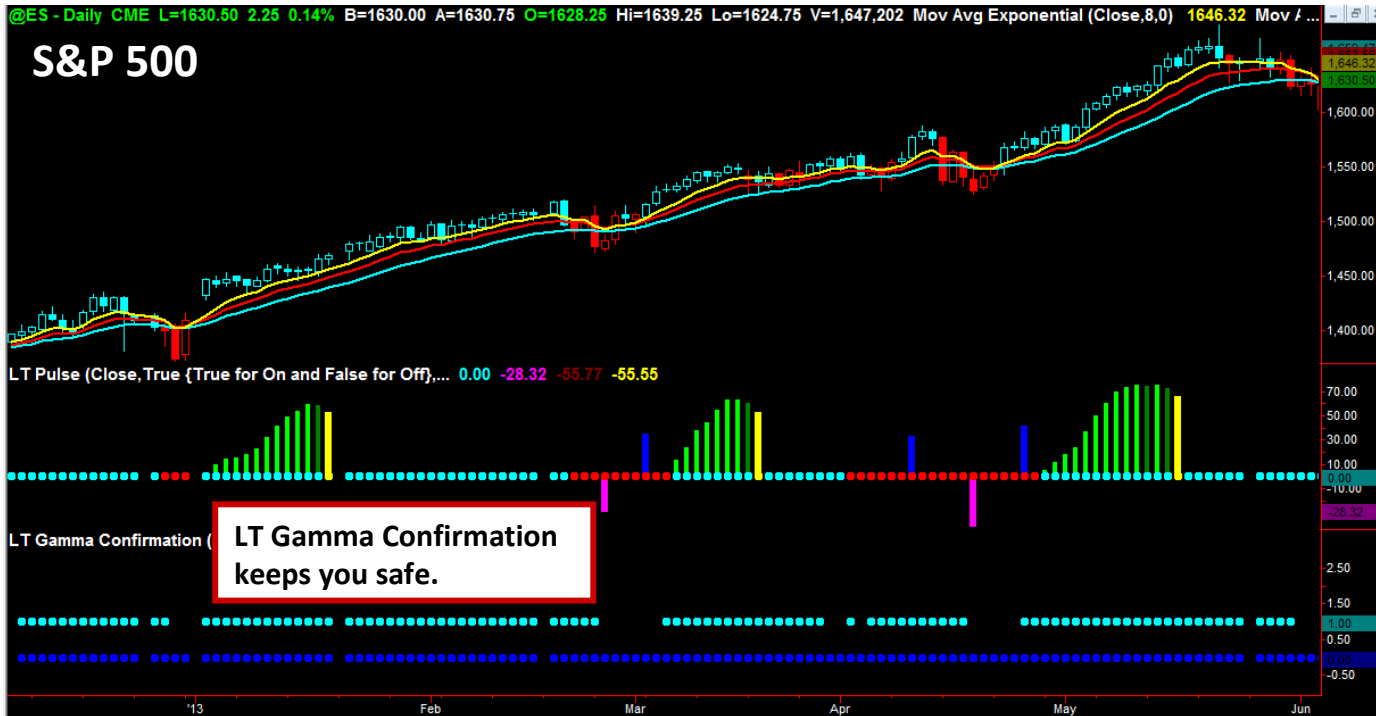
# Pulse with Early Signals to “sneak” into trade



# Pulse with Early Signals to “sneak” into trade

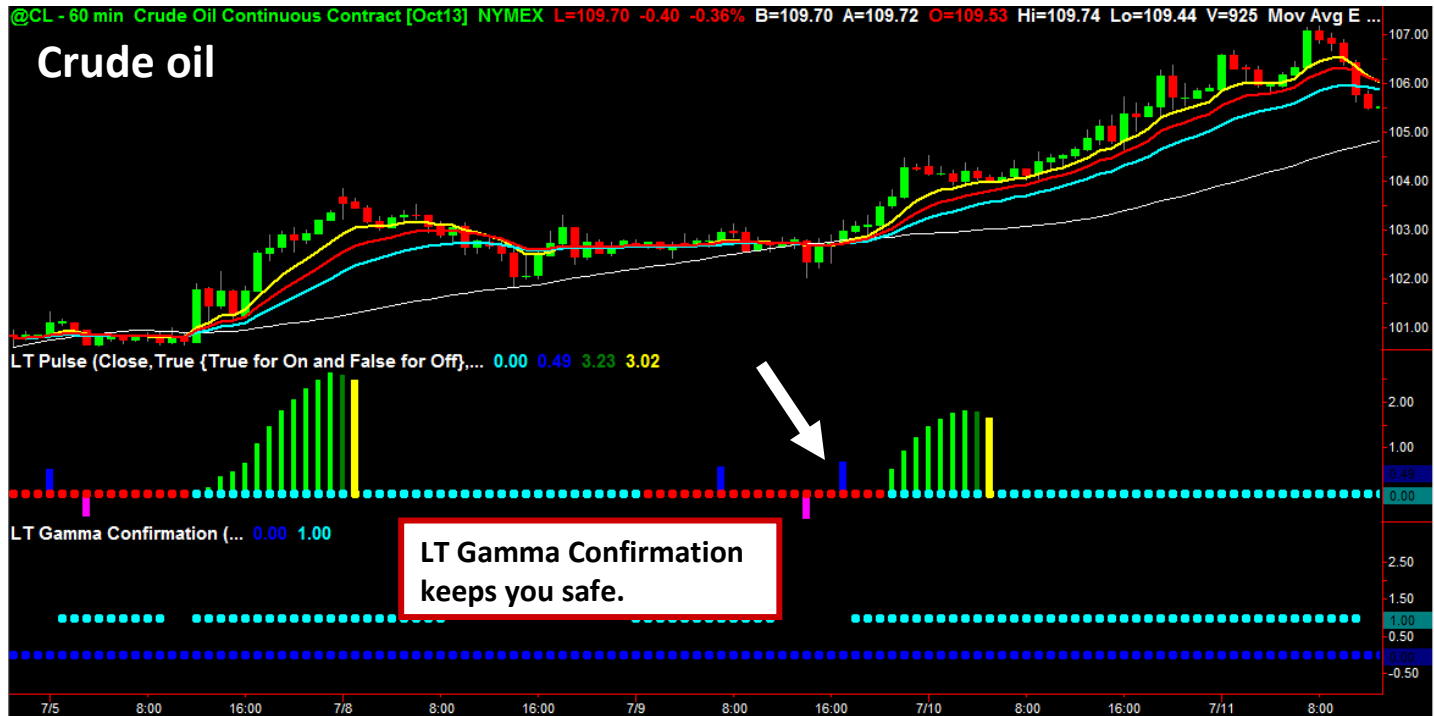


# Pulse with Early Signals to “sneak” into trade





# Pulse with Early Signals to "sneak" into trade



Which Pulses Have “Force” Behind them?



# LT Gamma Confirmation

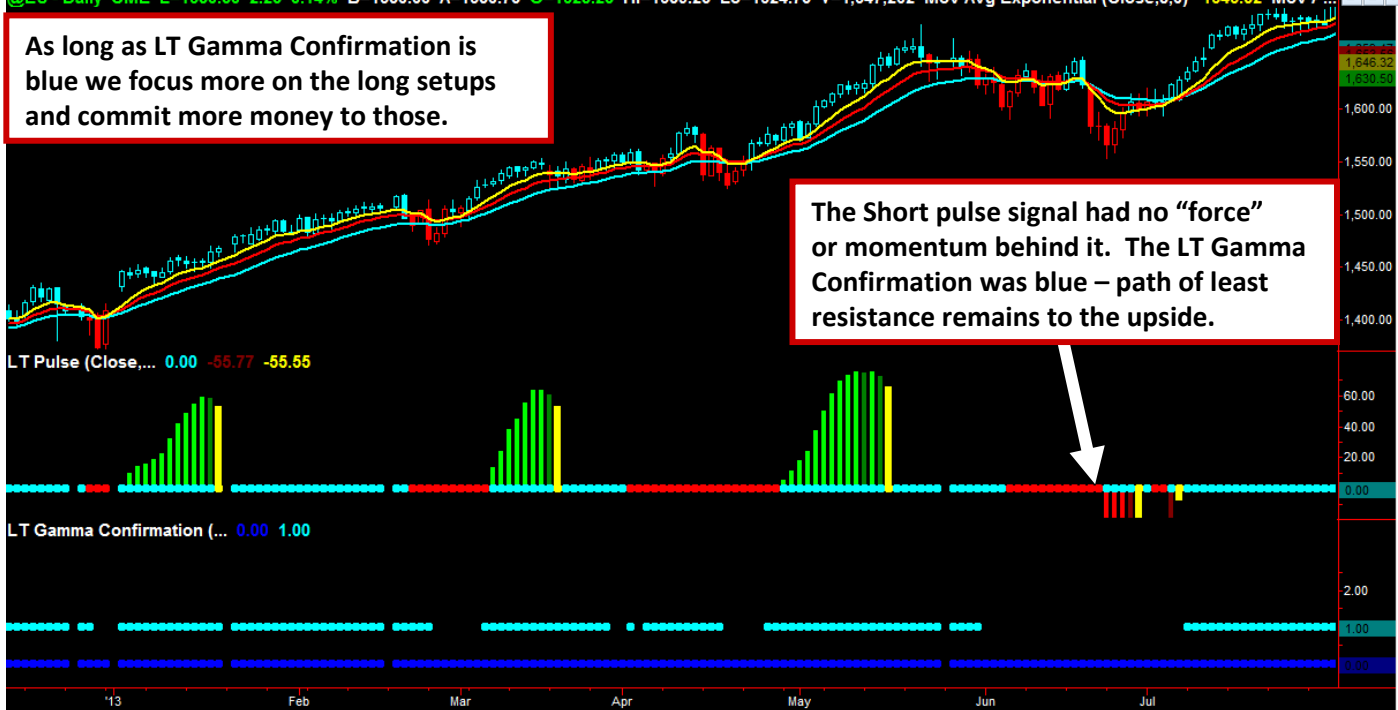
- Remember that successful trading is all about having an edge.
- So Gamma Confirmation **Filters out trades which have a less than 50% probability of working out.**
- **Keeps you on the path of least resistance** and eliminates the majority of the “noise” in the market.
- You can still take pulses without the LT Gamma confirmation, BUT I'll commit less money to those trades (as they have a lower probability).

# LT Gamma Confirmation

- LT Gamma Confirmation shows a signal when 3 different momentum and wave patterns are **in synch** with each other.
- When they are in synch, you'll see either a **RED** or **BLUE** dot.
- Red shows that **long term path and pressure** is to the downside (strong negative pressure). Blue shows that long term path is to the BUY side (strong upside pressure).
- I like to use it on every timeframe. I commit **MORE money** to pulse trades with Gamma confirmation.

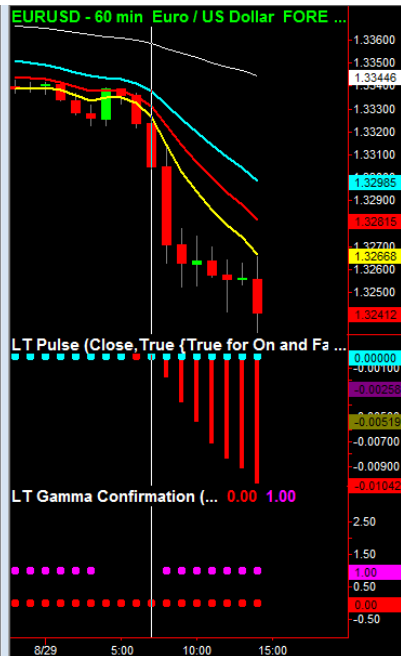
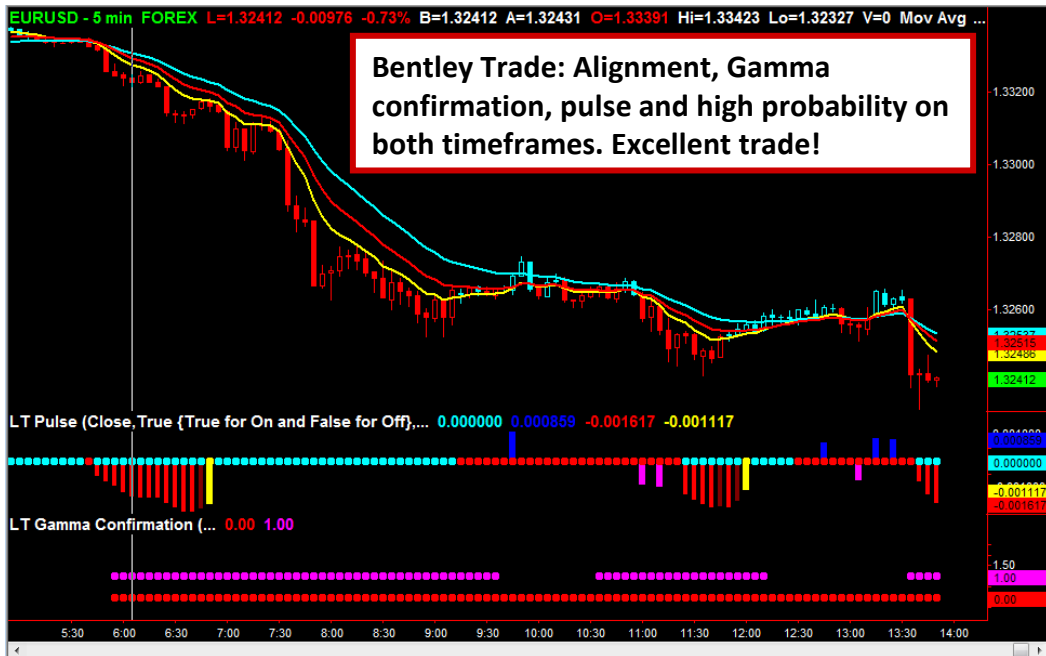
@ES - Daily CME L=1630.50 2.25 0.14% B=1630.00 A=1630.75 O=1628.25 Hi=1639.25 Lo=1624.75 V=1,647,202 Mov Avg Exponential (Close,8,0) 1646.32 Mov / ...

As long as LT Gamma Confirmation is blue we focus more on the long setups and commit more money to those.

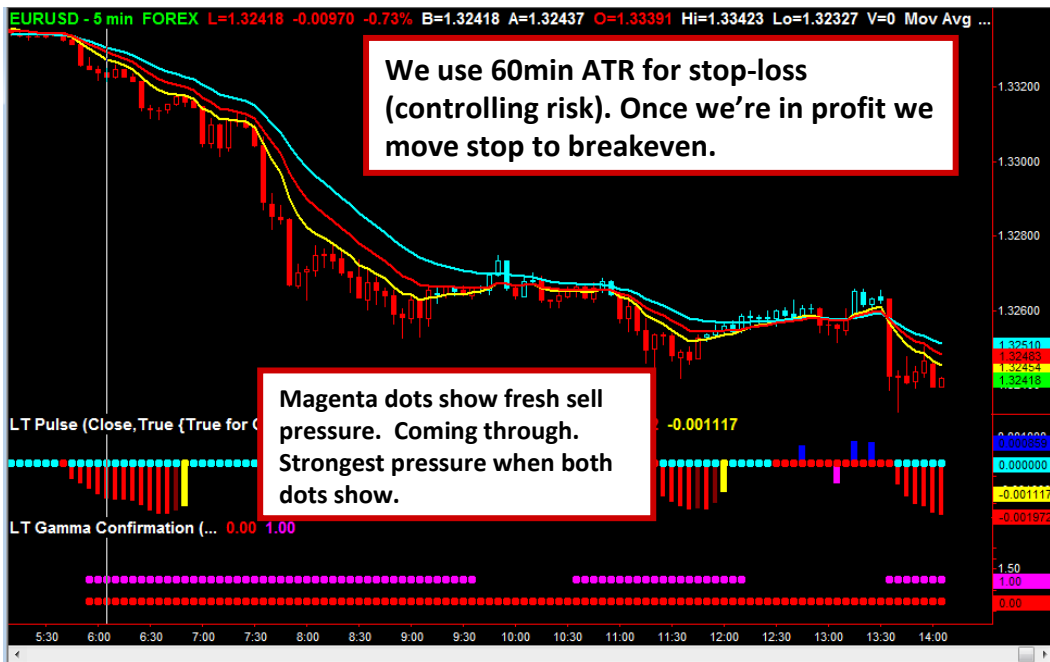


The Short pulse signal had no “force” or momentum behind it. The LT Gamma Confirmation was blue – path of least resistance remains to the upside.

# Trade taken today on Euro: Bentley or Beetle?



# Trade taken today on Euro: Bentley or Beatle?



# Pulse X-Zone: Precision timing with LT Pulse





# Pulse X-Zone

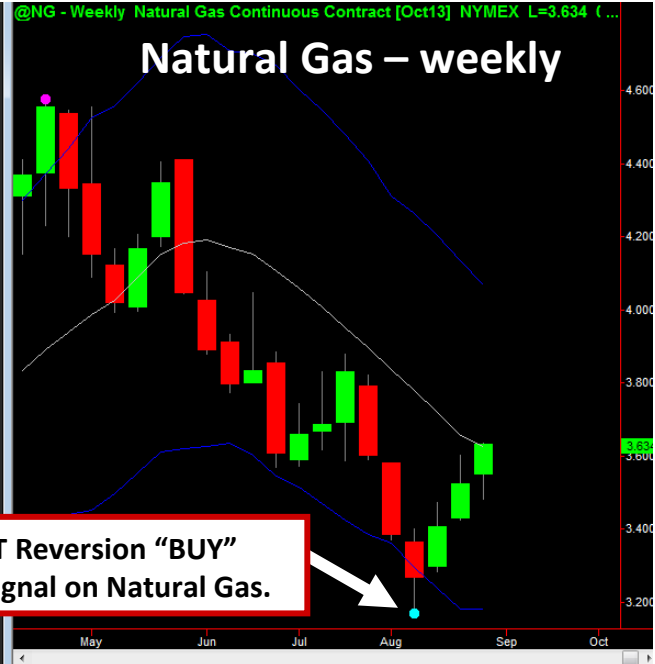
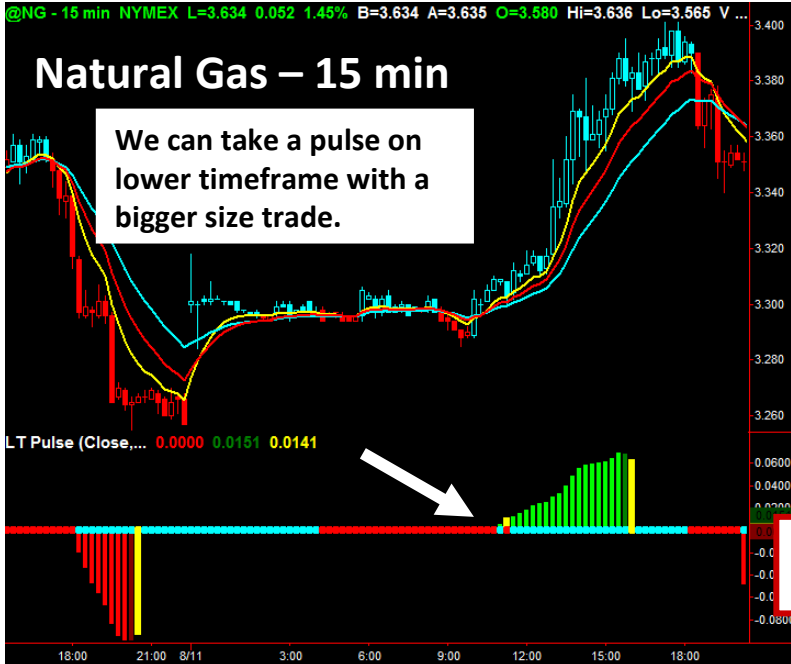
We buy Yamana Gold when 30 min long pulse fires at support. We trail on daily.



# Pulse X-Zone

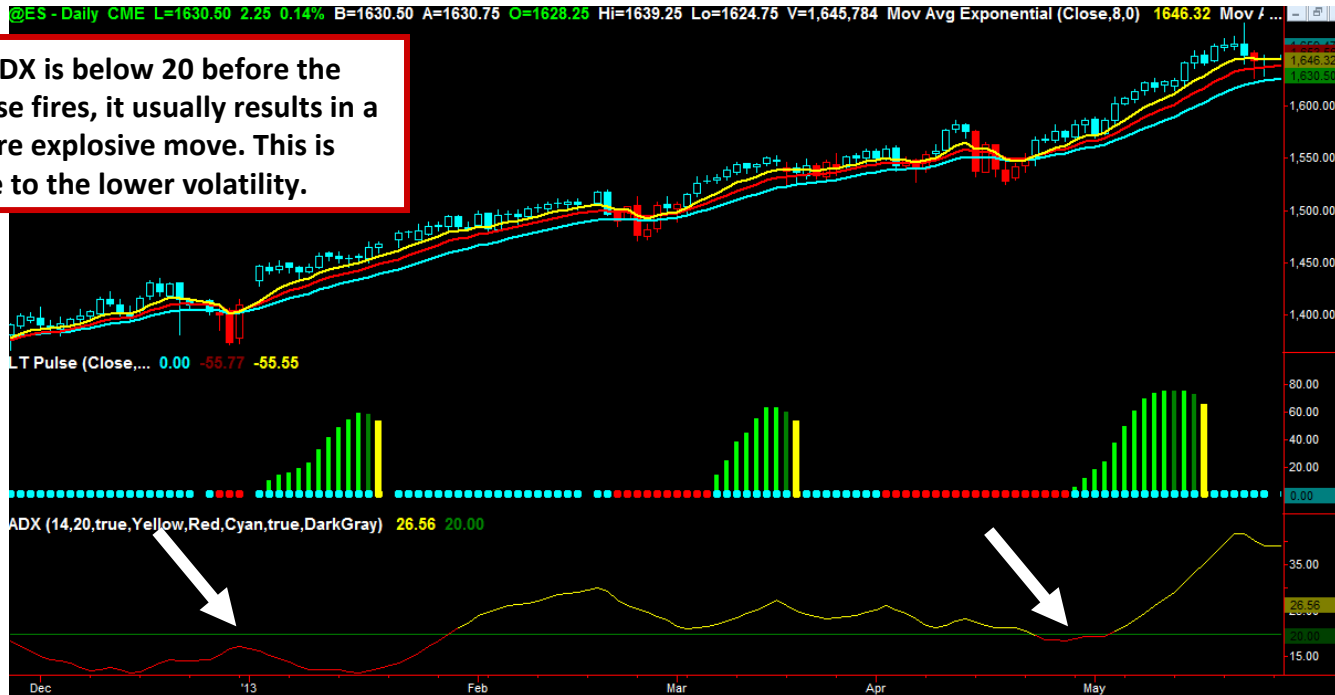


# Combining Pulses with LT Reversion



# “Turbo” Pulses

If ADX is below 20 before the pulse fires, it usually results in a more explosive move. This is due to the lower volatility.



# Some FAQs

Q: If LT Reversion and LT Pulse appear on the same timeframe at the same time, which do I take?

A: **Take the LT Pulse** as the signal is usually explosive.

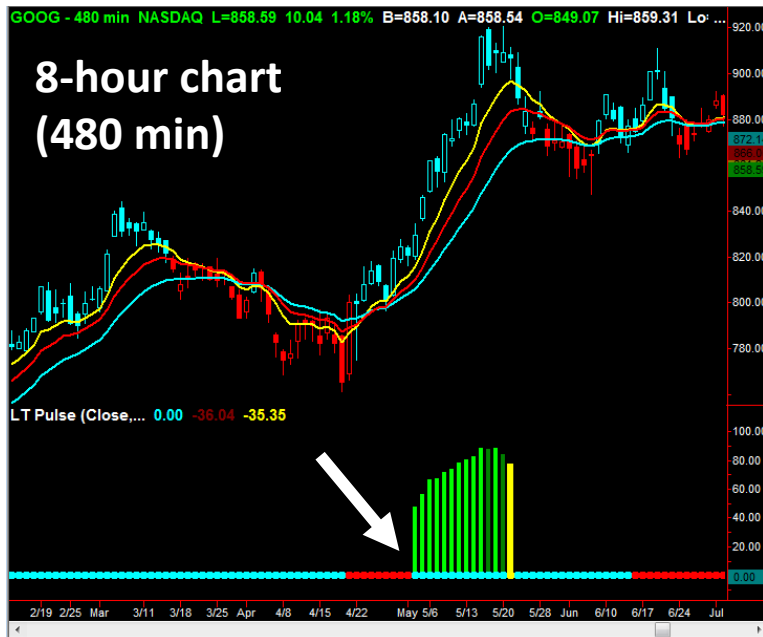
Q: What about major news announcements?

A: I would not place new trades 5 mins prior to any important economic news announcements (e.g. non-farm payroll, GDP, FOMC etc.)

Q: How do I get more pulse signals on the chart?

A: Switch to a lower timeframe (e.g. for more signals on Daily charts, switch to 240min. For more on 5min, switch to 2 min).  
(optional: temporarily change Boll. Band settings temporarily to 20, 1.5).

# Getting more signals by switching to lower timeframe



## Trader's Results:

Trevor

Using LT Pulse

	All Trades	Long Trades	Short Trades
Total Net Profit	\$80,325.00	\$33,050.00	\$47,275.00
Gross Profit	\$88,150.00	\$33,400.00	\$54,750.00
Gross Loss	(\$7,825.00)	(\$350.00)	(\$7,475.00)
Profit Factor	11.27	95.43	7.32
Avg. Trade Net Profit	\$8,032.50	\$8,262.50	\$7,879.17
Avg. Winning Trade	\$12,592.86	\$11,133.33	\$13,687.50
Avg. Losing Trade	(\$2,608.33)	(\$350.00)	(\$3,737.50)
Ratio Avg. Win:Avg. Loss	4.83	31.81	3.66
Largest Winning Trade	\$21,125.00	\$20,200.00	\$21,125.00
Largest Losing Trade	(\$6,850.00)	(\$350.00)	(\$6,850.00)
Max. Consecutive Winning Trades	4	2	3
Max. Consecutive Losing Trades	2	1	1
Avg. Bars in Winning Trades	176.29	338.67	54.50
Avg. Bars in Losing Trades	71.00	189.00	12.00
Avg. Bars in Even Trades	0.00	0.00	0.00
Return on Initial Capital	80.33%		

**WWW.FOREX-WAREZ.COM**  
**ANDREYBBRY@GMAIL.COM SKYPE: ANDREYBBRY**

**Special Pre-Release Package:**  
**EXPIRES THIS SATURDAY 31 AUGUST**



**LT Pulse & LT Gamma Confirmation  
Combo Value Package**

**LT Pulse**

~~\$797~~ ONLY:  
**\$497**

~~\$497~~ ONLY:  
**\$397**

 **Go to: [www.leadingtrader.com/get](http://www.leadingtrader.com/get)**